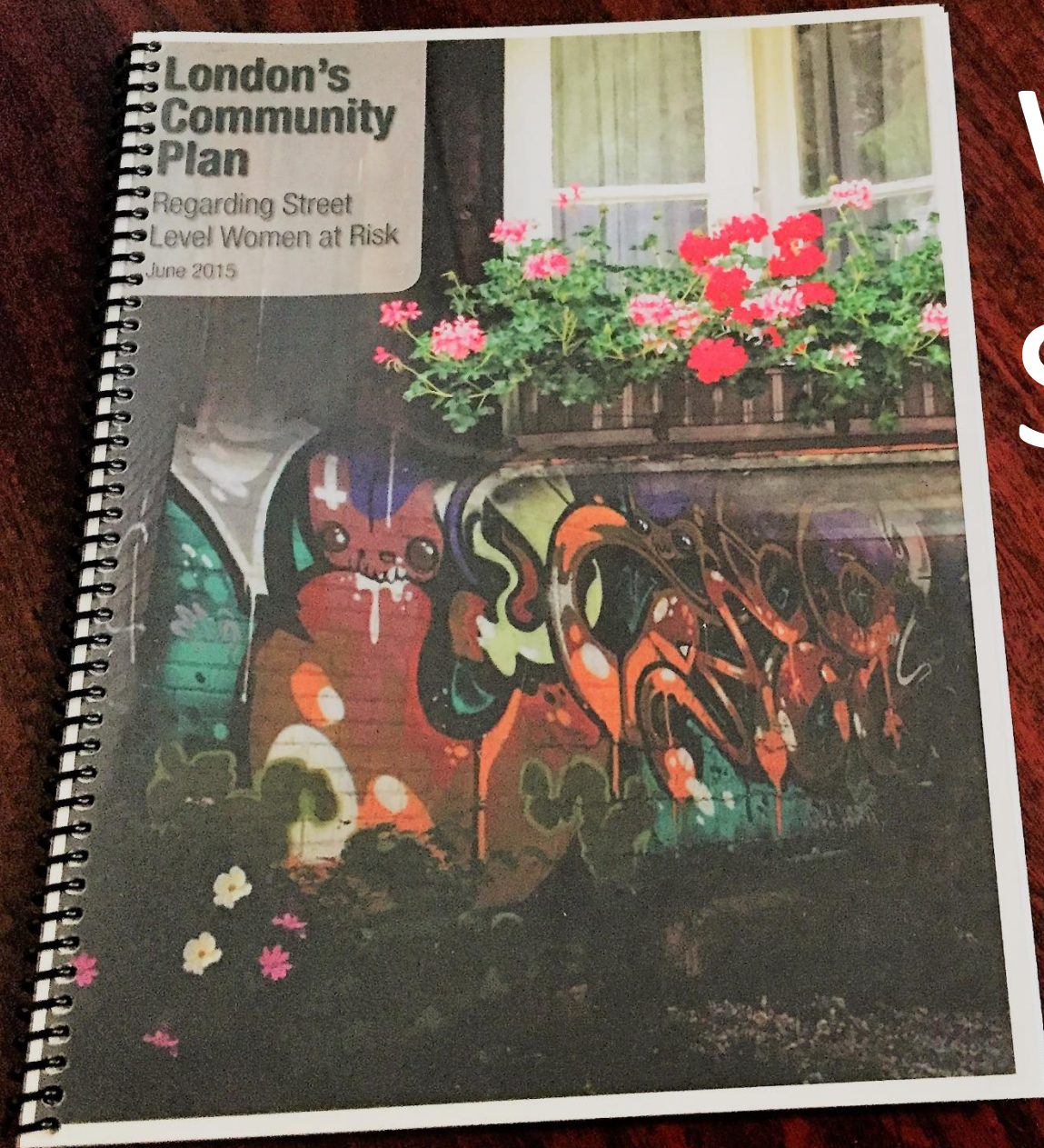


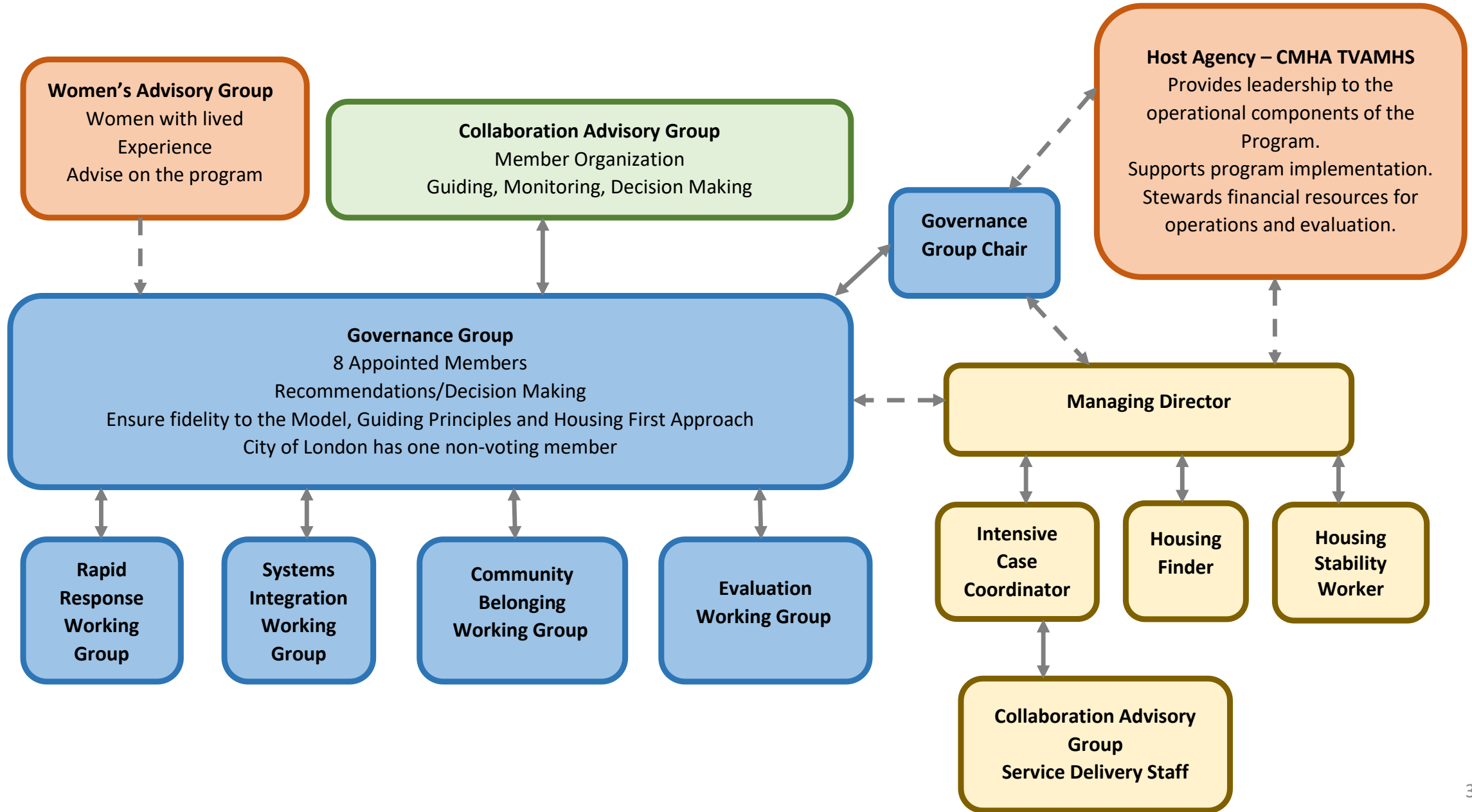
A painting of a street scene. In the foreground, a woman in a white headscarf and a child are walking. The background shows a brick wall and a window with flowers. The text 'STREET LEVEL WOMEN AT RISK' is overlaid in the center.

**STREET LEVEL
WOMEN AT RISK**



What is SLWAR?

Organizational Chart – The Street Level Women at Risk Program



What is unique about SLWAR?

- 26 Agency Collaborative Housing First Model
- Women with lived experience continue to consult leadership on operations
- One consent form
- Reallocated staff
- SLWAR has it's own referral and matching process

History of the Women's Advisory Group (WAG)

“Nothing about us without us”

- 33 women with lived expertise helped to build the foundational model of SLWAR
- Meetings took place over 3 consulting sessions in 2014
- Once the model was adopted by community and operations began in 2016, the WAG began to meet on a monthly basis with the SLWAR leadership team

“If I can just have a home, not just a place and just a few good people in my life, then I know I can make it.” - Women's Advisory Group Member, 2014

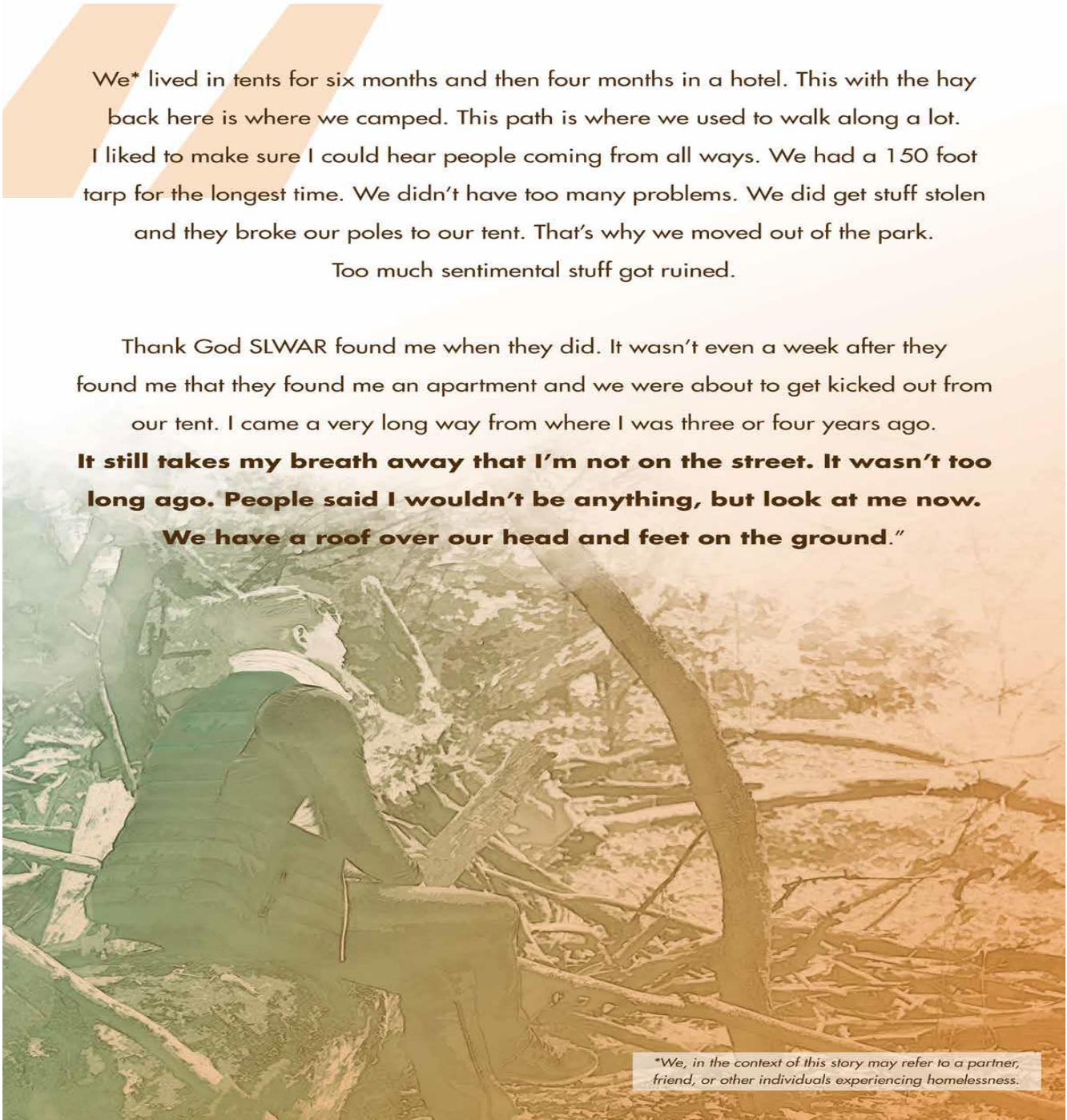
Women's Advisory Group Meetings

From the evaluation, the WAG members identified the following has gone well with implementation:

- Being able to share their experiences and having their voices heard and valued
- Feeling their time is valued through receiving an honorarium for participation
- The meeting location and time are accessible
- Incentives help promote continued involvement (e.g. sharing a meal, offering support with transportation if needed, providing an honorarium)
- Providing childcare for members who have children
- Having an opportunity to develop supportive relationships with other women who share similar experiences

Women's Advisory Group Meetings

- Women with lived expertise continue to meet with SLWAR leadership regarding daily operations of the program on a monthly basis
- Terms of Reference can be found in the [Program Guide](#)
- Agenda is sent out by Director in advance with items for discussion by both the leadership team and WAG
- Meetings are 2 hours and on a set date and time of each month
- Meetings are led by the Director of SLWAR
- Limited to specific SLWAR staff and Governance Group members and information shared out with the team
- No identifying participant information is shared

A person with short hair, wearing a dark jacket and a white scarf, is sitting on a large log. They are looking out over a landscape that appears to be a wooded area with many fallen branches and trees. The scene is bathed in a warm, golden light, suggesting either sunrise or sunset. The overall mood is contemplative and somewhat somber.

We* lived in tents for six months and then four months in a hotel. This with the hay back here is where we camped. This path is where we used to walk along a lot. I liked to make sure I could hear people coming from all ways. We had a 150 foot tarp for the longest time. We didn't have too many problems. We did get stuff stolen and they broke our poles to our tent. That's why we moved out of the park.

Too much sentimental stuff got ruined.

Thank God SLWAR found me when they did. It wasn't even a week after they found me that they found me an apartment and we were about to get kicked out from our tent. I came a very long way from where I was three or four years ago.

It still takes my breath away that I'm not on the street. It wasn't too long ago. People said I wouldn't be anything, but look at me now. We have a roof over our head and feet on the ground."

**We, in the context of this story may refer to a partner, friend, or other individuals experiencing homelessness.*

Other Ways SLWAR Engages the Women's Advisory Group

- Speaking engagements
- Paid Peer Evaluator positions for the 3 year evaluation
- Participation in development of the Program Guide
- Participation in the development of the Strategic Plan
- Created a separate committee for the review and approval of Education Fund Requests
 - Education fund was an idea brought forward by the WAG to be able to support participant goals, not just related to education
 - Donor was inspired and gave \$20,000 to help get it started
 - Brochure was created and distributed to participants, some have started accessing this opportunity
- Attend programming in community alongside participants at their request such as NA meetings
- Will be providing onboarding for new WAG members such as participants that have graduated from the SLWAR program



I have a home and my kids with me.

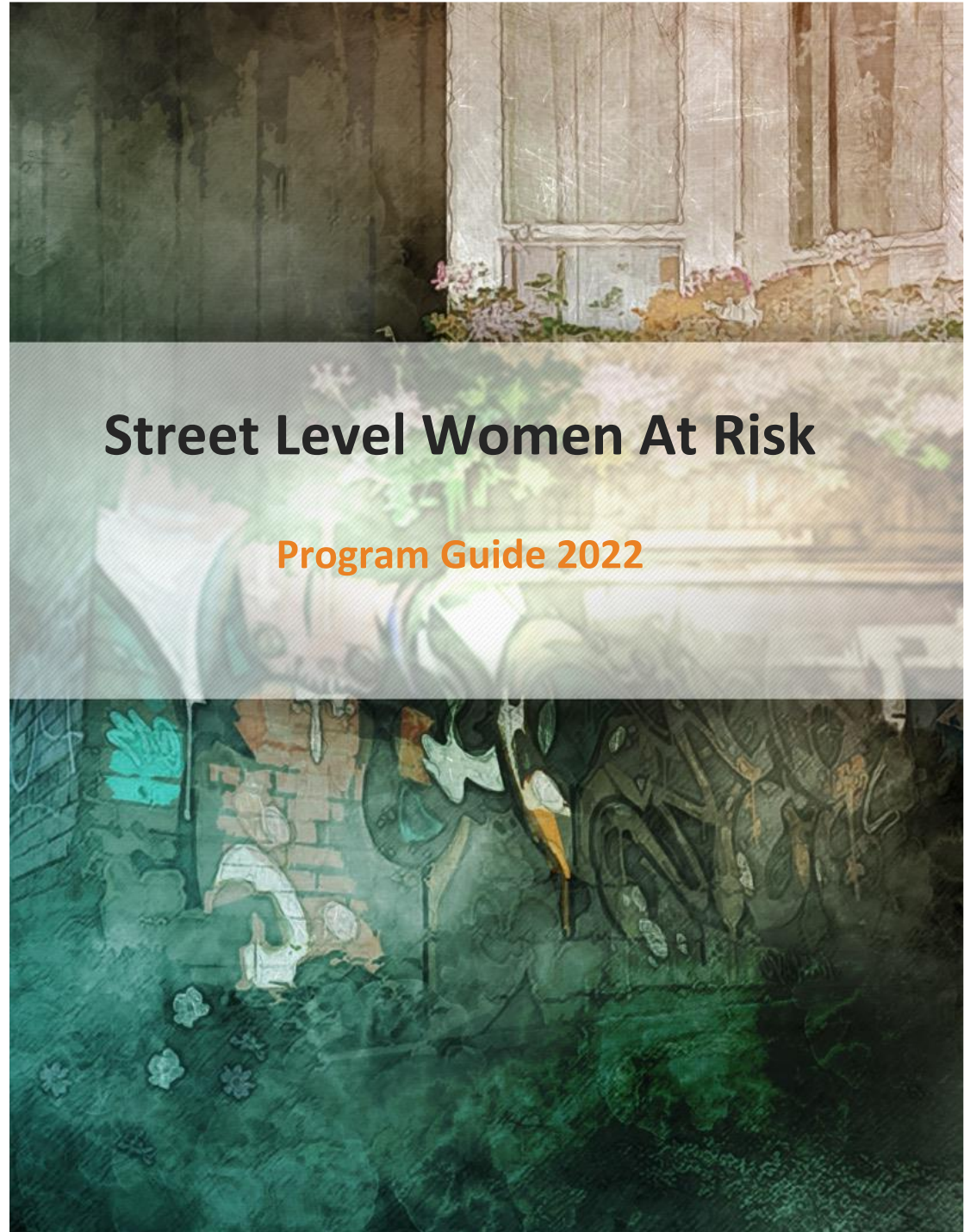
I've been here almost a year.

It's stability and I'm feeling better about myself. I'm just thinking about my future. Mostly I like to just do mom things – feeding my kids and taking care of them.”



How did a collaborative approach change outcomes for street involved sex workers in London Ontario?
Result of an extensive 3-year evaluation can be found here:

[Our Impact – SLWAR](#)



Want to learn more about us?

- Visit the SLWAR website www.slwar.ca
- Download the Year 3 Evaluation
- Download the Program Guide
- We want to work with your community, reach out to us
- Monthly SLWAR Webinars December- June
 - Supporting Women Engaged in Survival Sex Work through Housing First: December 13th, 2023 at 1:00pm EST \$50 registration fee

Contact Information

jseeler@slwar.ca

www.slwar.ca



Employment and
Social Development Canada

Emploi et
Développement social Canada



Ontario



London
CANADA