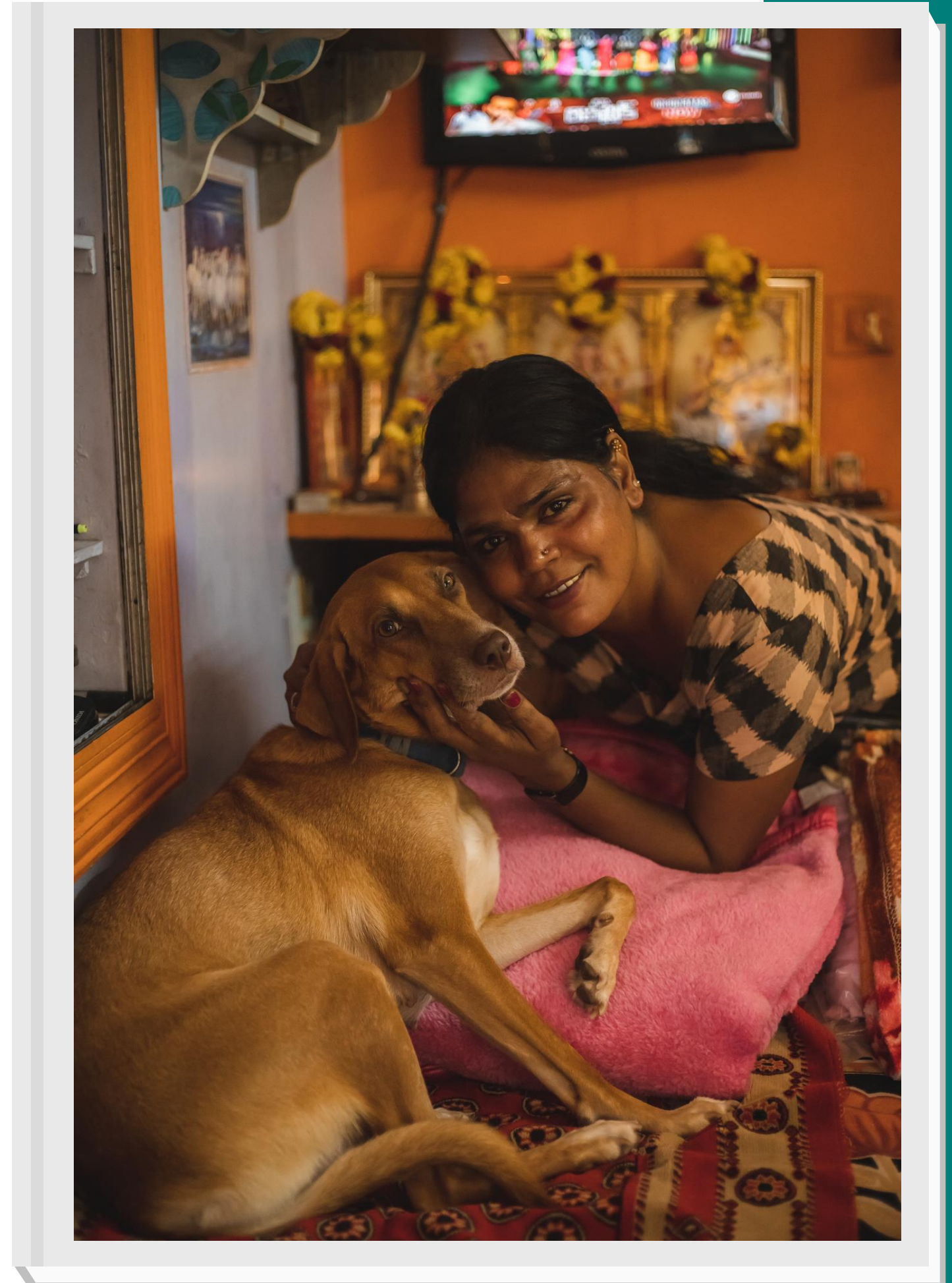


Intersections Between Homelessness & Women with Animals Experiencing Gender-Based Violence

**ACT (Awareness,
Collaboration, Tools) To
Keep Families Safe**





Land Acknowledgement

Meet the ACT Team



**Andrea
Ondrade**

ACT Project Coordinator



Claire Dulude

ACT Project Coordinator



Sue O'Neill

ACT Project Manager

Reminders

- Language
- Animal Images
- Acknowledgement of Survivor Experience
- Group Safety & Self-Monitoring

Learning Outcomes

- Identify complexities in leaving an abusive relationship and barriers to safe, affordable, and animal-friendly shelter and housing for survivors of Gender-Based Violence and their animals
- Apply the ACT (Awareness, Tools, Collaboration) to Keep Families Safe Model in your advocacy and collaboration work to prevent homelessness for survivors with animals

Rationale

60% of Canadian households include a dog or cat
(2022)

A significant portion of survivors experiencing GBV
confronts an inadequate system excluding survivors
with animals

(Gray et al., 2019)

COVID-19 has heightened the impact of this as pet
adoptions and social isolation have increased

(CBC, 2020)



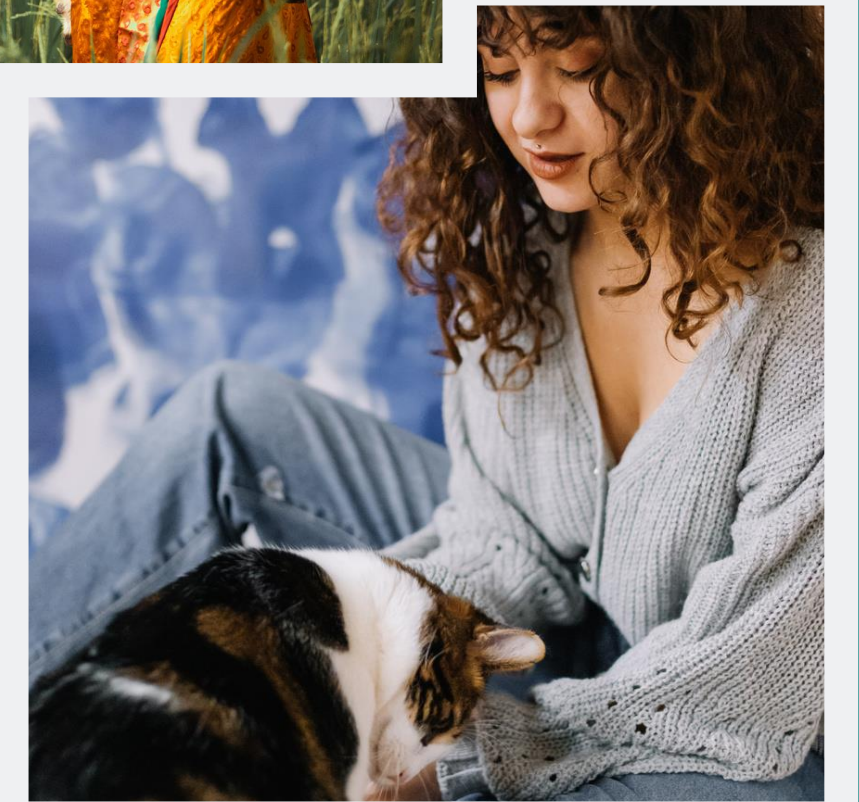
The Violence Link

The strong link between animal violence and human violence

- For survivors experiencing GBV their animals are often a primary source of support.
- Aggressors use that strong bond to harm, intimidate and control their partners to be silent about their abuse:

(Campbell et al., 2018)

- 56% of survivors delayed leaving;
(Barrett et al., 2017)
- 1 in 3 considered returning
(Barrett et al., 2017);
- 1 in 8 survivors in Canada report experiencing threatened or enacted violence against their animals
(Fitzgerald, et al., 2018)





ACT (Awareness, Collaboration, Tools) Project for Women with Animals Experiencing Gender-Based Violence

A three-year project funded by Women and Gender Equality (WAGE) to address systemic barriers to help-seeking, safety planning and support services for survivors with animals (companion, farmed, and service) experiencing Gender-Based Violence.

Thank You

Jasmine Ferreira, MSW (PhD Candidate)

Dr. Amy Fitzgerald

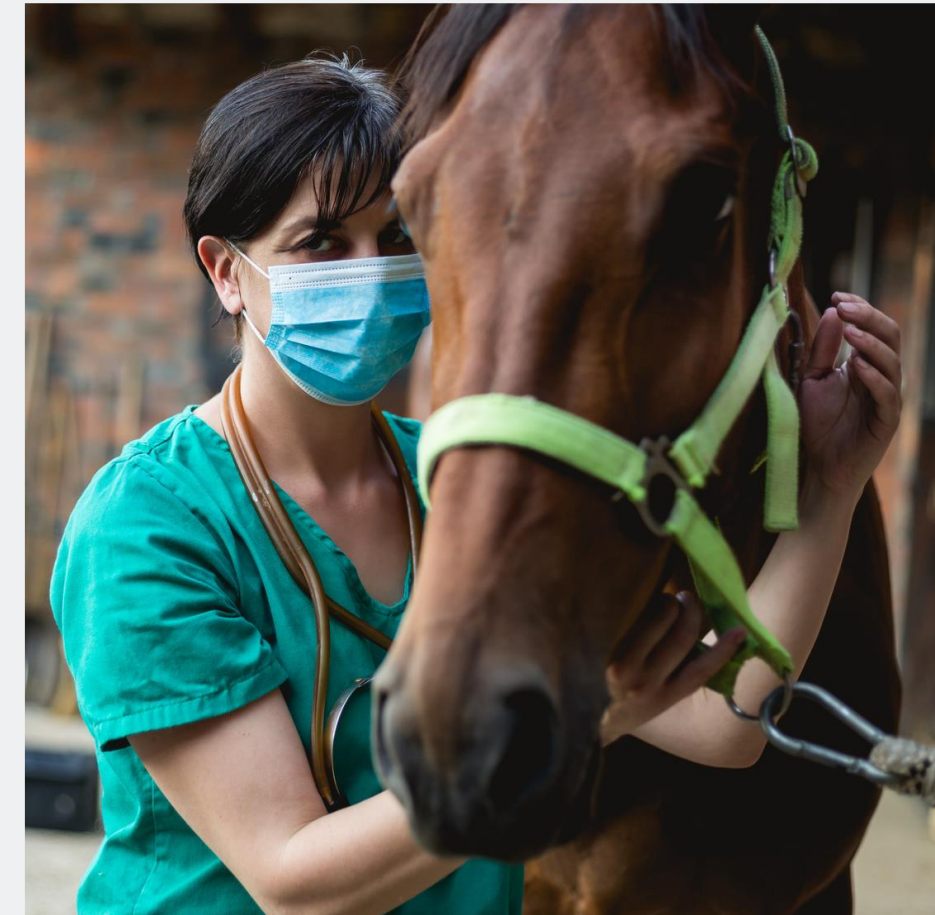
Dr. Rochelle Stevenson

Dr. Kendra Coulter



Project Objectives

- 1) Raise **awareness** and increase communication about the Violence Link among key sectors that engage with women experiencing GBV and safety planning.
- 2) Develop and implement an adaptable **collaborative** response model (ACRM) for animal-owning women experiencing GBV that can be adapted to underrepresented groups of women, including Indigenous, Survivors, OLMC and rural women.
- 3) Provide education, **tools**, resources and access to ACRM to sectors directly responding to women experiencing GBV, specifically an online learning centre and regional workshops.





Women and Gender
Equality Canada

Femmes et Égalité
des genres Canada

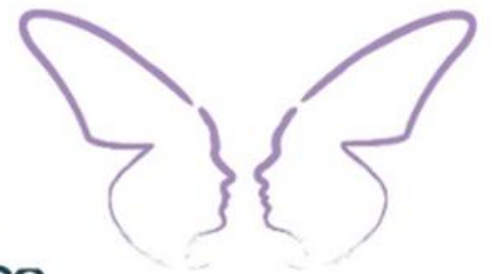
Humane Canada® acknowledges and appreciates the contributions of the project partners for this project.



like no other.



Because it takes courage



Ending Violence
ASSOCIATION OF CANADA



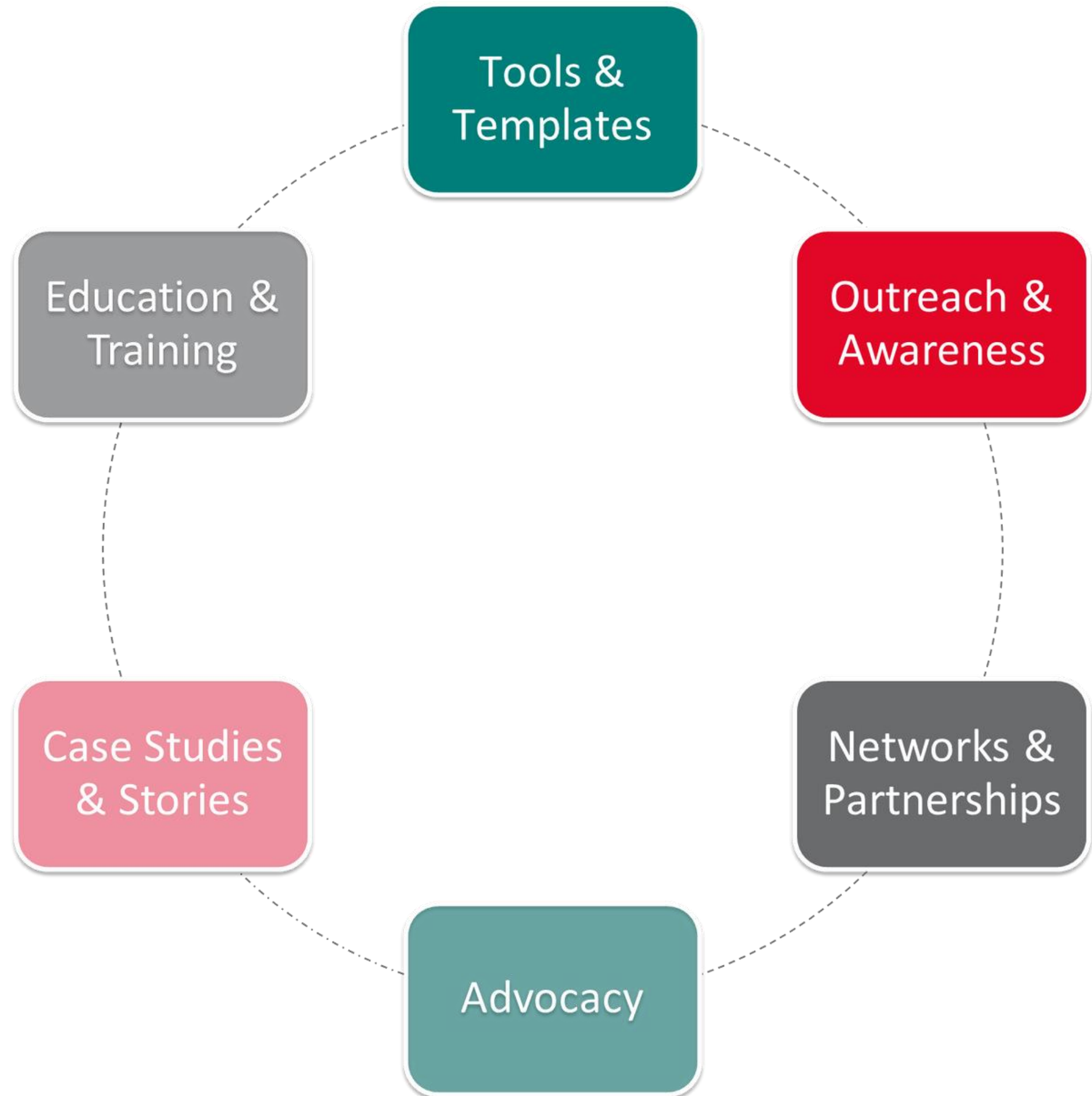
NATIONAL ADVOCACY.
COMMUNITY ACTION.
UNE VOIX NATIONALE.
DES ACTIONS LOCALES.



L'Ombre-Elle
Maison d'aide et d'hébergement
pour femmes victimes de violence conjugale
avec ou sans enfants.



ACT To Keep Families Safe





Gender-Based Violence & Homelessness



Complexities of Leaving a Violent Relationship

FINANCIAL CONCERNS

ESCALATING VIOLENCE

ACCESSING SERVICES

CONCERN FOR CHILDREN

BOND WITH ANIMALS



Barriers to Accessing Animal Friendly Shelter

Lack of on-site sheltering

**Lack of animal
safekeeping programs**

**Off-site sheltering
is short-term**

**Separation from family
members**

Barriers to Accessing Animal Friendly Housing

**LACK OF A CLEAR STANDARDIZED NATIONAL
APPROACH TO INCLUSIVE HOUSING**

DISCRIMINATION FROM LANDLORDS



Impact of Barriers



**Delay leaving or may stay
in abusive relationship**



**Exacerbated trauma for
survivors and animals**



**Precariously housed or
experiencing homelessness**



How Do We Create Solutions for Survivors & Their Animals?

Advocacy

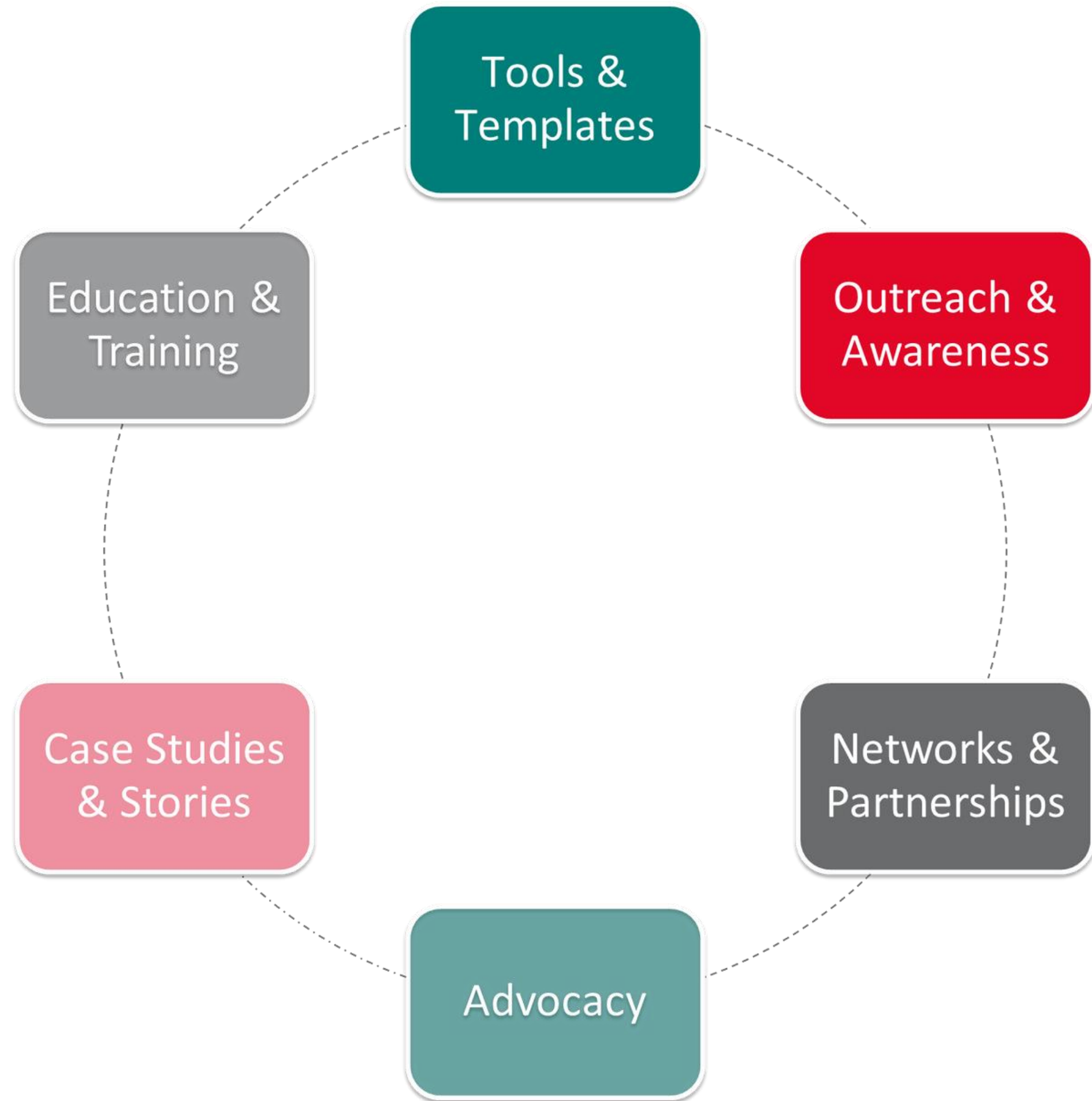
- Federal Housing Advocate Submission
 - research
 - survivor voices
 - organization feedback
- Local and community advocacy

Cross-Sectoral Collaboration

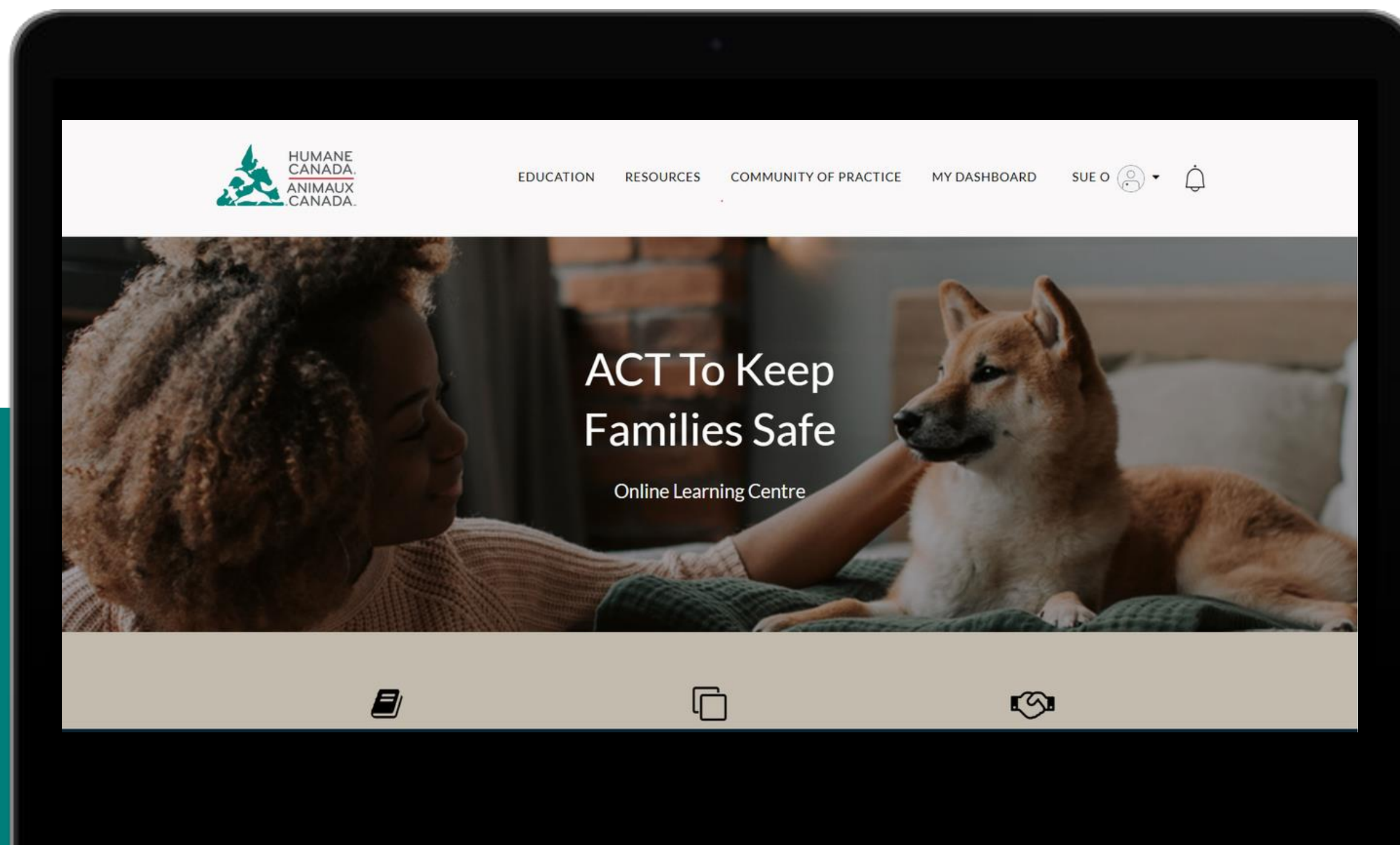
- Partnerships between Animal and Human Services
- ACT To Keep Families Safe
Community of Practice



ACT To Keep Families Safe



ACT to Keep Families Safe Online Learning Centre





Conclusion

How to Get Involved...

humanecanada.ca/act-project

- Sign-up for the **ACT Newsletter**
 - A quarterly update on new resources, educational opportunities, and organization highlights
- Collaborate in the **ACT To Keep Families Safe Community of Practice**
 - Upcoming Winter COP: "Uplifting Survivor Voices"
- Check out the **ACT TO Keep Families Safe Online Learning Centre:**
 - Download resources, tools, and templates
- Participate in the **online learning modules** when they launch and share your feedback!





Thank you!

We hope to see you at our next Community of Practice!



Connect with the Team

Andrea@humanecanada.ca

Claire@humanecanada.ca

Sue@humanecanada.ca

Follow Along on Social Media!



[@humanecanada](https://www.instagram.com/humanecanada)



[@HumaneCanada](https://twitter.com/HumaneCanada)



[Humane Canada](https://www.linkedin.com/company/HumaneCanada)



[Humane Canada](https://www.facebook.com/HumaneCanada)



References

Ascione, F. R., Weber, C. V., Thompson, T. M., Heath, J., Maruyama, M., & Hayashi, K. (2007). Battered pets and domestic violence: Animal abuse reported by women experiencing intimate partner violence and non-abused women. *Violence Against Women*, 13(4), 354–373. <https://doi.org/10.1177/1077801207299201>

Canada. Women and Gender Equality Canada. (2021). What is gender-based analysis plus? <https://women-gender-equality.canada.ca/en/gender-based-analysis-plus/what-gender-based-analysis-plus.html>

The Canadian Animal Health Institute (CAHI). (2023, May 3). 2022 – latest Canadian pet population figures released. <https://www.cahi-icsa.ca/fr/press-releases/2022-latest-canadian-pet-population-figures-released#:~:text=Not%20surprisingly%2C%20the%20survey%20results,least%20one%20cat%20or%20dog>

Cottafava, D. & Corazza, L. (2020). Co-design of a stakeholders' ecosystem: An assessment methodology by linking social network analysis, stakeholder theory, and participatory mapping. *Kybernetes*, 50, 836–858. <https://doi.org/10.1108/K-12-2019-0861>

Duane, A., Casimir, A. E., Mims, L. C., Kaler-Jones, C. & Simmons, D. (2021). Beyond deep breathing: A new vision for equitable, culturally responsive, and trauma informed mindfulness practice. *Middle School Journal*, 52, 4–14. <https://doi.org/10.1080/00940771.2021.1893593>

Fitzgerald, A. J., Barrett, B. J., & Gray, A. (2021). The co-occurrence of animal abuse and intimate partner violence among a nationally representative sample: Evidence of “The link” in the general population. *Violence and Victims*, 36(6), 770–792. <https://doi.org/10.1891/vv-d-19-00047>

Giesbrecht, C. J. (2021). Animal safekeeping in situations of intimate partner violence: Experiences of human service and Animal Welfare Professionals. *Journal of Interpersonal Violence*, 37(17–18). <https://doi.org/10.1177/08862605211025037>

Government of Ontario. (2018, November 19). Residential Tenancies Act, 2006, S.O. 2006, c. 17. Ontario.ca. <https://www.ontario.ca/laws/statute/06r17>

Gray, A., Barrett, B. J., Fitzgerald, A., & Peirone, A. (2018). Fleeing with Fido: An analysis of what Canadian domestic violence shelters are communicating via their websites about leaving an abusive relationship when pets are involved. *Journal of Family Violence*, 34(4), 287–298. <https://doi.org/10.1007/s10896-018-0023-z>

Hess, A. (2001). *Concepts of social stratification: European and American models*. Palgrave.



References

Hess, A. (2001). *Concepts of social stratification: European and American models*. Palgrave.

Humane Canada. (2020, July). *The Violence Link Review of the Literature*. <https://humanecanada.ca/wp-content/uploads/2020/07/Review-of-the-Violence-Link-Literature-.pdf>

Lindsay, S. M. (2022). The “problem” of Multispecies Families: Speciesism in emergency intimate partner violence (IPV) shelters. *Social Sciences*, 11(242), 1–14. <https://doi.org/10.3390/socsci11060242>

Matsuoka, A., & Sorenson, J. (2022). Inclusive approaches by VAW shelters: Respecting women's choice to be together with Companion Animals. *Affilia: Feminist Inquiry in Social Work*, 1–17. <https://doi.org/10.1177/08861099221097758>

Morrison, A., Gilliland, F., MacGregor, N., Lopez, M., Israel, D., Carolin, J. & Zellars, R.(2022). *Leading with abundance: Transformative justice as a framework for change [Webinar]*. Womenatthecentre.

National EMS for Children Data Analysis Resource Center. (2021). *An instruction manual: Tools and processes for conducting a remote SWOT analysis*. https://www.nedarc.org/workshops/materials/documents/FINAL_RemoteSWOTProcessInstructionManual051121.pdf

Qiu, J. X. J. & Rooney, D. (2019). Addressing unintended ethical challenges of workplace mindfulness: A four stage mindfulness development model. *Journal of Business Ethics*, 157, 715–730. <https://doi.org/10.1007/s10551-017-3693-1>

Riggs, D. W., Taylor, N., Signal, T., Fraser, H., & Donovan, C. (2018). People of diverse genders and/or sexualities and their animal companions: Experiences of family violence in a binational sample. *Journal of Family Issues*, 39(18), 4226–4247. <https://doi.org/10.1177/0192513x18811164>

Ríos, J.F., Sanchez, T., & Terrassa, N. (2023, March 21–23). *Animals in Permanent Supportive Housing in Spain [Plenary Address]*. Co-Sheltering Conference 2023.