

St. Thomas-Elgin Youth Homelessness Protocol

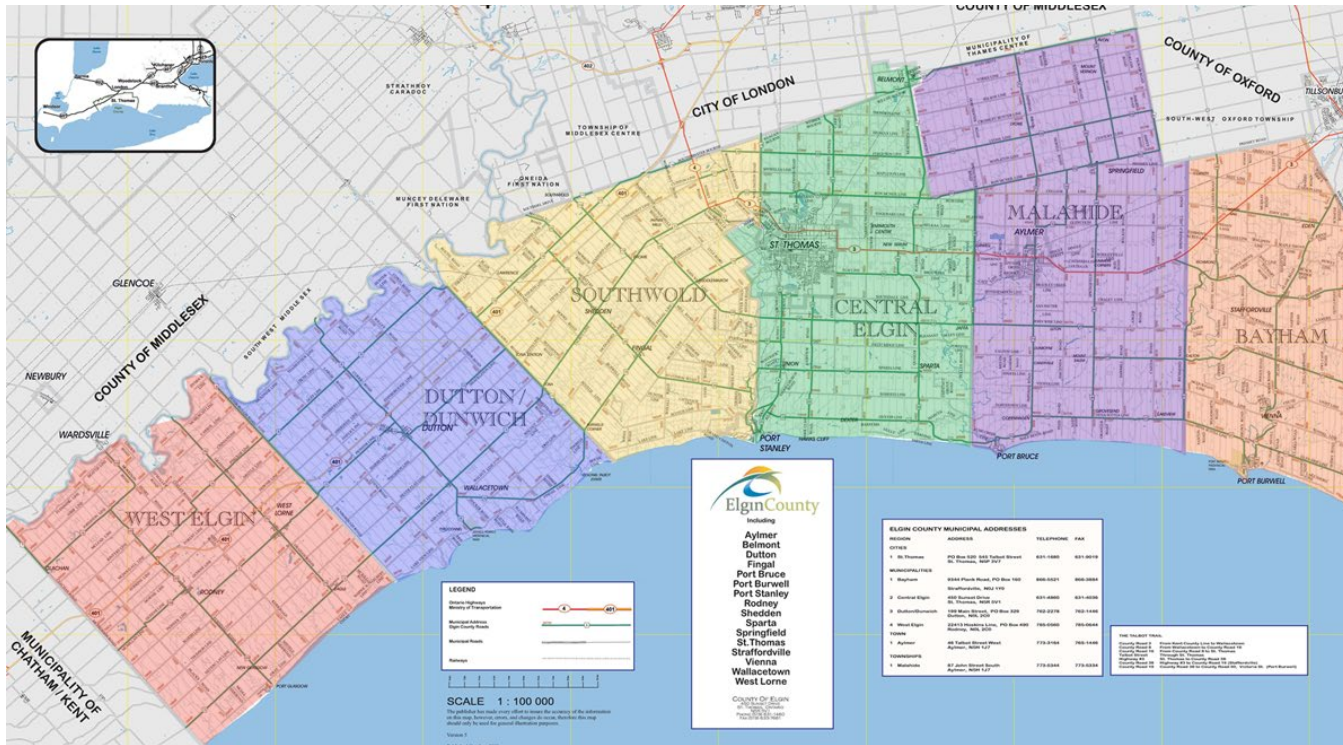
taking action on
YOUTH HOMELESSNESS

Presented By:
Lianne Pike, Youth Homelessness Systems Developer &
Jeannette Singh, Director of YWCA Housing



YWCA ST. THOMAS - ELGIN

www.ywcastthomaselgin.org



Population of St. Thomas: 41,813
 Population of Elgin County: 50,069

We are located 20 minutes from London, ON and
 2 hours from Toronto, ON



The Youth Homelessness Protocol Partners



Canadian Mental
Health Association
Elgin County
Mental health for all

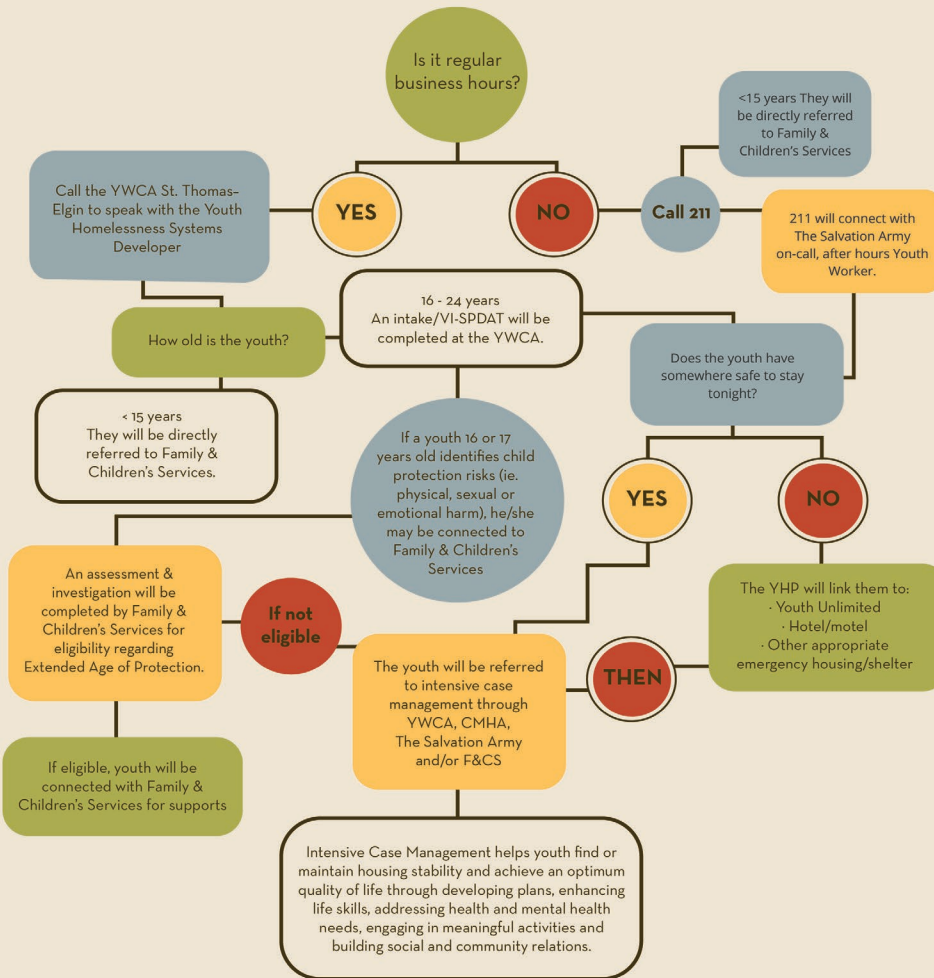


YWCA ST. THOMAS - ELGIN



ST. THOMAS-ELGIN YOUTH HOMELESSNESS PROTOCOL FOR YOUTH AGES 16-24 YEARS OLD

To be followed when a youth is experiencing a housing crisis and is currently homeless or will be homeless within the next 48 hours



Protocol Resources Include:

- ▶ System diversion, navigation and housing placement supports
- ▶ Intensive Case Management by Housing Based Case Managers
- ▶ Rent Supplements
- ▶ Funding for family reunification services and/or counselling
- ▶ System matching meetings (coordinated access)
- ▶ Ontario Works Participation Agreement Addendum for youth

Moving from Homelessness to Housing Stability

YWCA received a 3 year grant from the Local Poverty Reduction Strategy

- ▶ 1 Intensive Case Manager working directly with youth
- ▶ Data collection, focus groups, research analysis by third party researcher Org Code Consulting
- ▶ Rent subsidies \$12,000+
- ▶ New data based research for our community
- ▶ Community wide assessment tool (SPDAT)

Intensive Case Management

Housing Based Case Managers assist youth with finding and maintaining housing stability and achieving an optimum quality of life

- ▶ Develop plans
- ▶ Enhance skills
- ▶ Address health & mental health needs
- ▶ Engage in meaningful daily activities
- ▶ Build social and community relations
- ▶ Guided by common assessment tools - Vi SPDAT and SPDAT

Impact Evaluation of the Youth Homelessness Protocol & Intensive Housing Based Case Management

March 2016 to July 2018

Inflow

March 2016 - July 2018

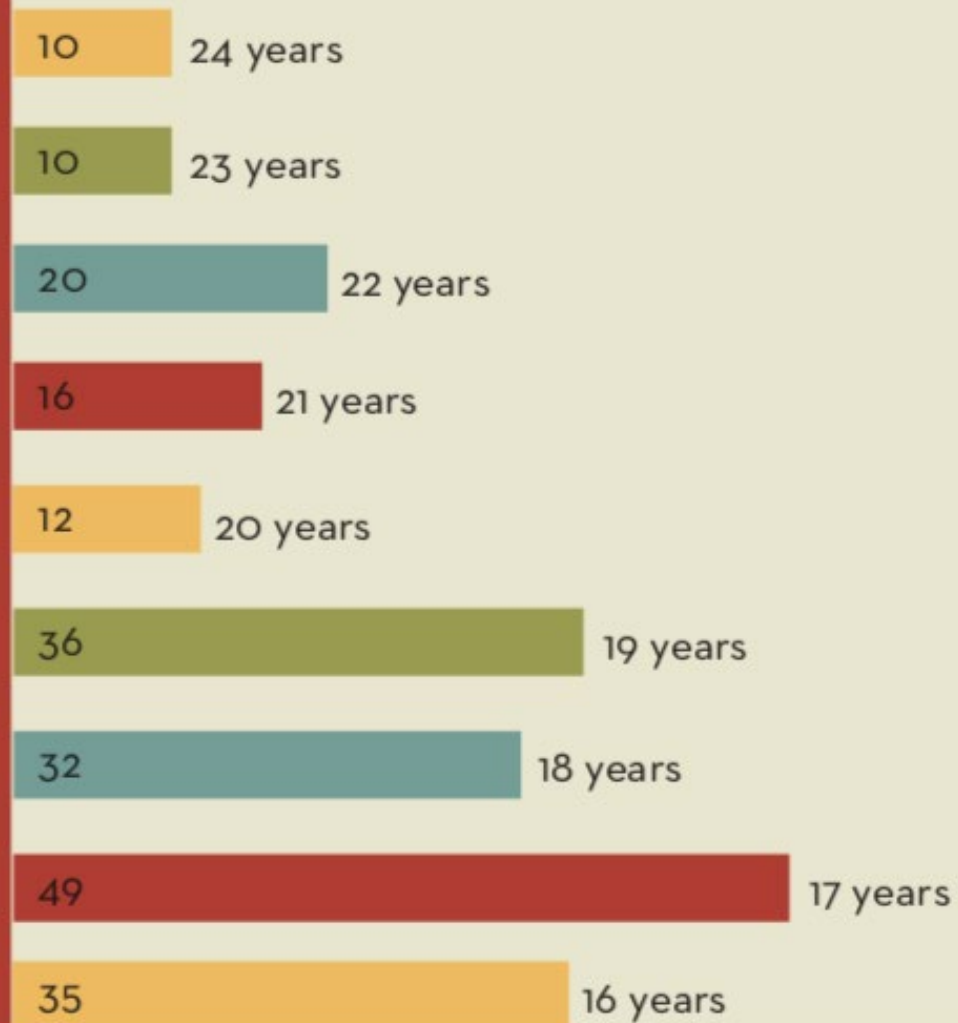
- ▶ **220** Homeless Youth Accessed the Protocol between March 2016 to July 2018
- ▶ **150** Youth received intensive case management by the YWCA HBCMs

Gender Identity for YHP (n=220)

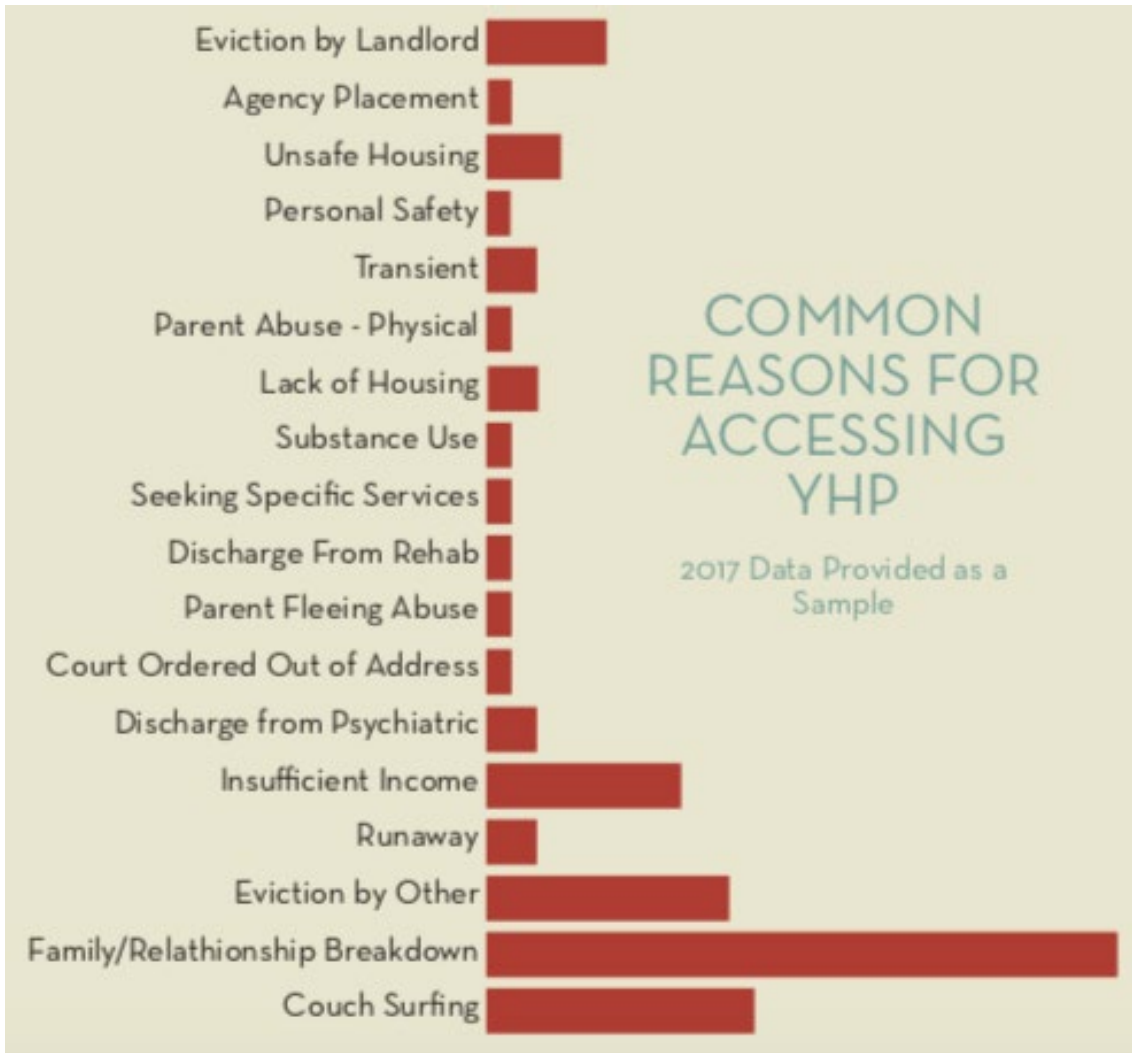


Age Distribution

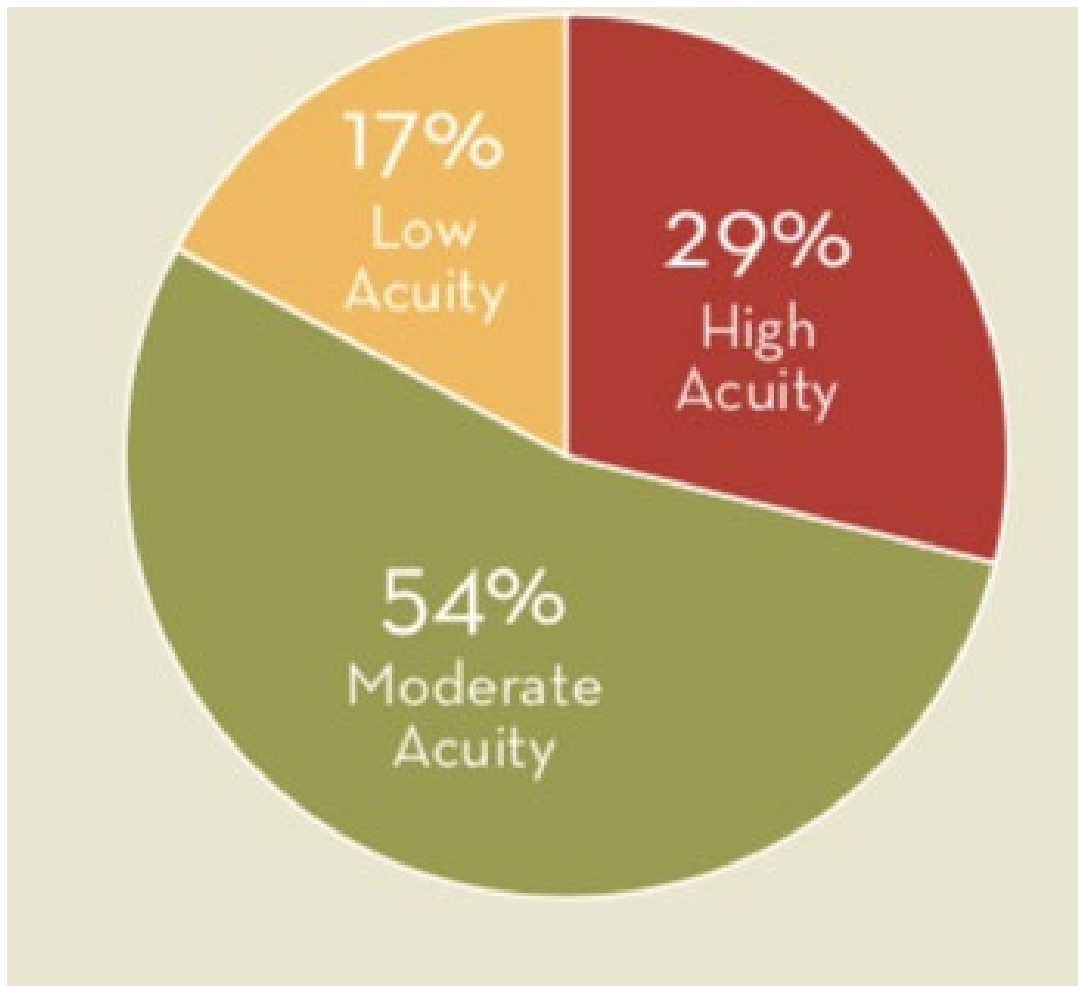
AGE
DISTRIBUTION
OF YHP YOUTH
(N=220)



Common Reason for Accessing the Protocol



SPDAT Acuity Levels of Youth (n=220)



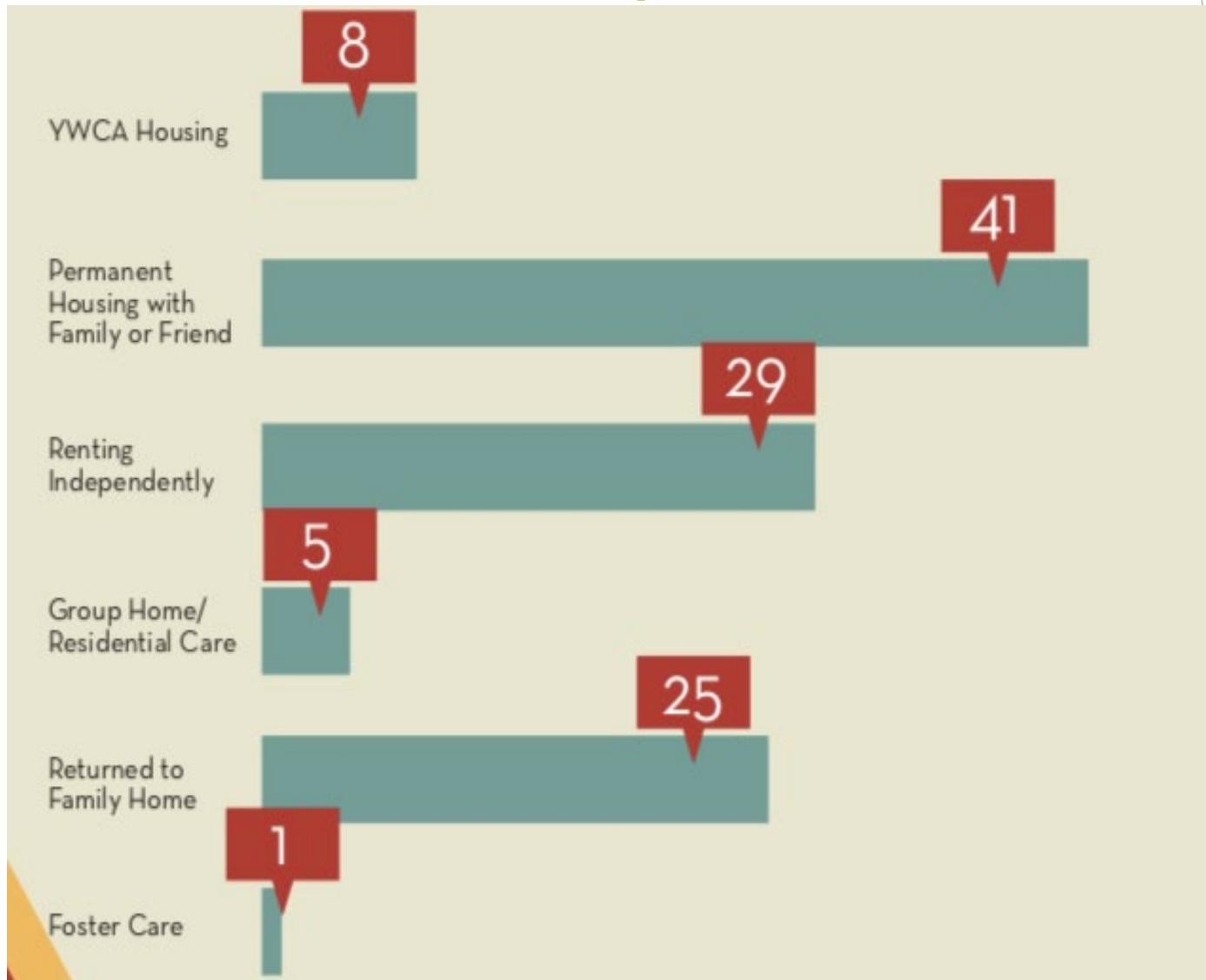


Stable Housing
82%

Lack of Stable
Housing
18%

Youth Exits (N=133)

Stable Housing Locations Upon Exit



YOUTH EXITING WITHOUT STABLE HOUSING (N=24)

Addictions Treatment Facility



Correction Facility



Couch Surfing



Emergency Shelter



Unsafe Family Home



Lack of Contact/Unkown



We learned that our
intervention was working!



Since March 2014 to October 2019, the Youth Homelessness Protocol has supported:

▶ **377 Youth**

- ▶ [Voice Behind the Lens](#)
- ▶ <https://ywcaste.ca/programs/supportive-housing/>
- ▶ [Voice Behind the Lens: The Next Chapter](#)
- ▶ https://www.youtube.com/watch?v=vHsky_XAhE

Lianne Pike

Youth Homelessness Systems Developer

lpike@ywcaste.ca

519.631.9800 ext. 237



thank
YOU

Jeannette Singh

Director of Housing

jsingh@ywcaste.ca

519.631.9800 ext. 229



YWCA ST. THOMAS - ELGIN