



homeward trust
edmonton

It takes more than a program

A systems approach to ending Homelessness

October 2017

**How do we go from reducing
homelessness to actually ending it?**

**Edmonton's Math Problem:
3079 – 6600 = 1752?!**



homeward trust
edmonton

The Best Laid Plans...

- Plans to end homelessness are invaluable
- A plan is a huge shift in a community
- Plans recognize the scope and complexity of the task, but:
 - Implementation tends to be narrower
 - Plans are grounded in a place and a time
 - Should you update a Ten-year Plan?

First: Housing First

- Getting Housing First programs running
- Is it a program, a philosophy or a movement?
- Housing First should be transformative
- Edmonton's experience is mixed

More Than a Program

- Housing First implementation highlights system gaps
- Edmonton has bridged gaps and pursued change in many ways
- But, you can't end homelessness with a program
- Bigger systems changes still needed

Systems Thinking

SYSTEM PLANNER ORGANIZATION

OUTREACH

EMERGENCY
SHELTER

SHORT-TERM
SUPPORTIVE
HOUSING

INTERIM
HOUSING

DIVERSION

COORDIANATED
ACCESS

SUPPORTED
REFERRALS

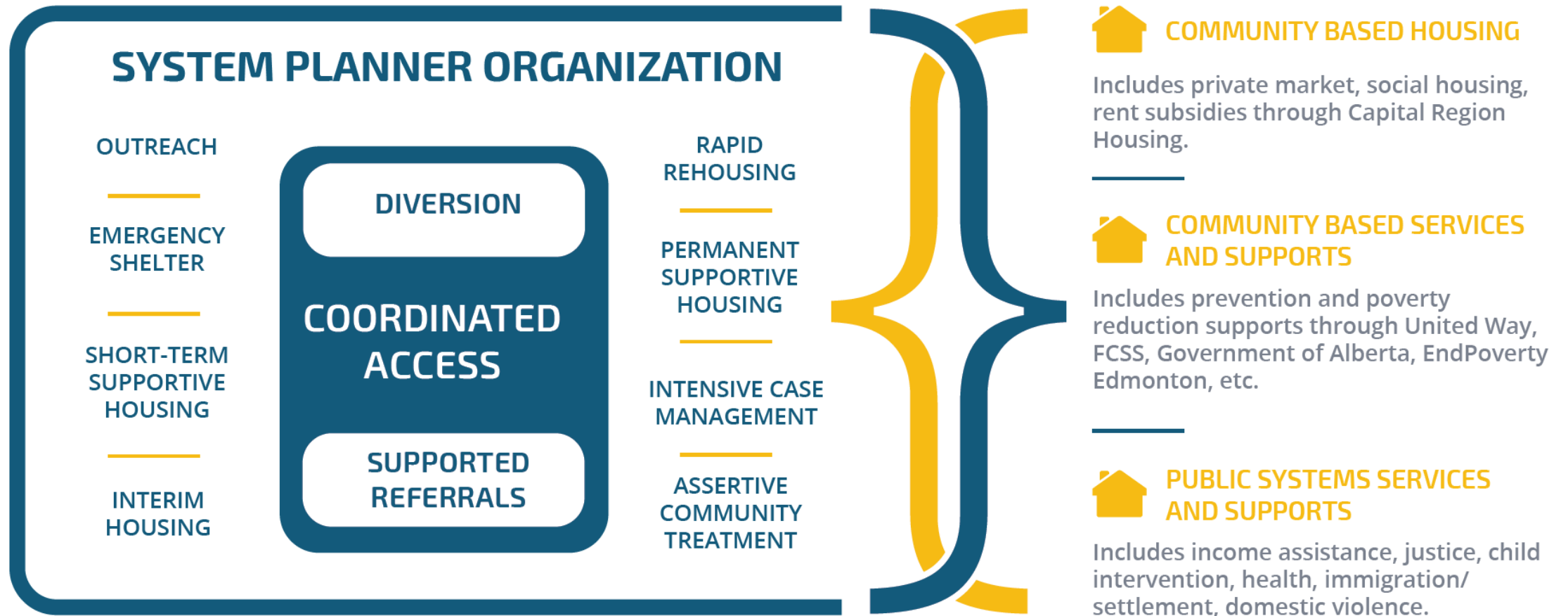
RAPID
REHOUSING

PERMANENT
SUPPORTIVE
HOUSING

INTENSIVE CASE
MANAGEMENT

ASSERTIVE
COMMUNITY
TREATMENT

The Bigger Picture



Influencing Others


- How do you make change to systems that are outside of your control?
- Edmonton's experience:
 - Problem-solving
 - Mobilize evidence
 - Build it and they will come
 - But also – if you break it, you bought it

What Happened to the Plan?

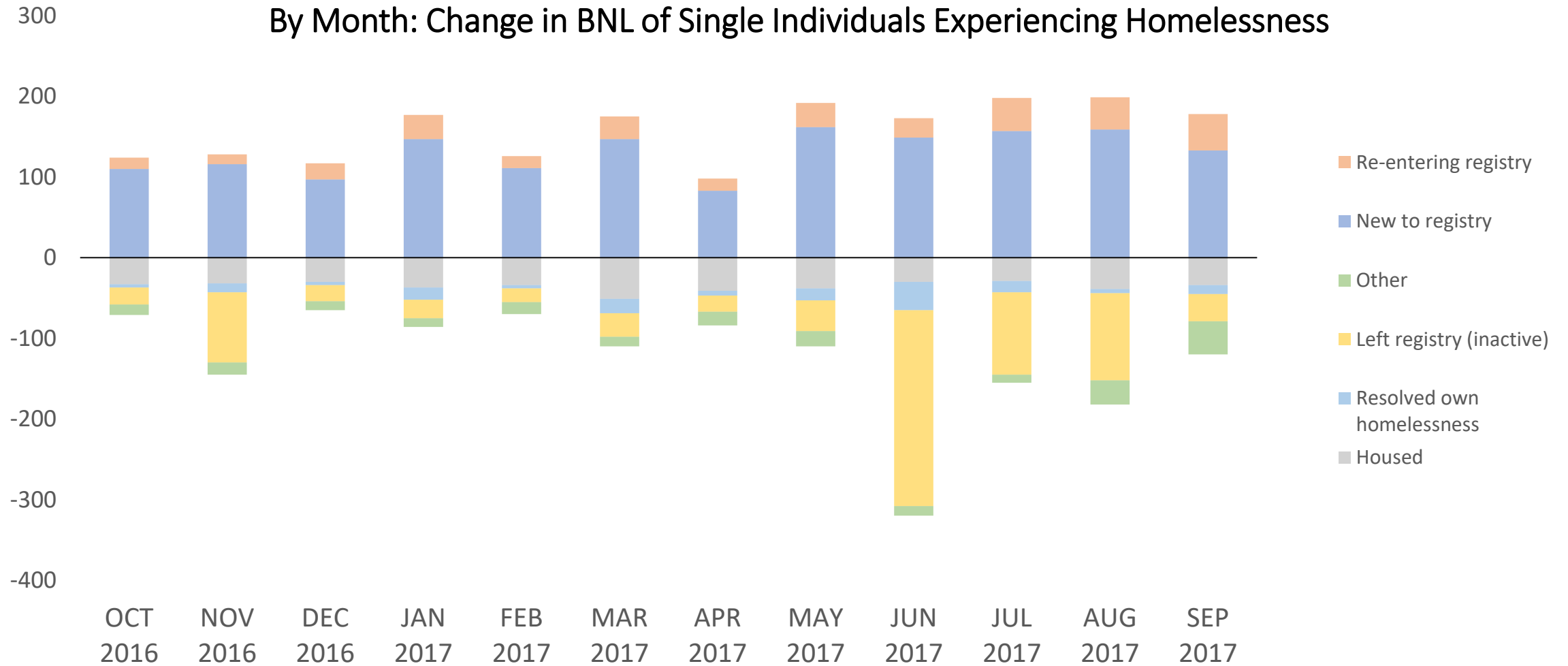
- Reflecting on progress
 - Strong success with Housing First programs
 - Some priorities and needs haven't changed
 - Importance of systems not just programs
- Planning environment has become more complex
- The community and leadership have evolved
- We've learned a lot about what works

Where to Now?

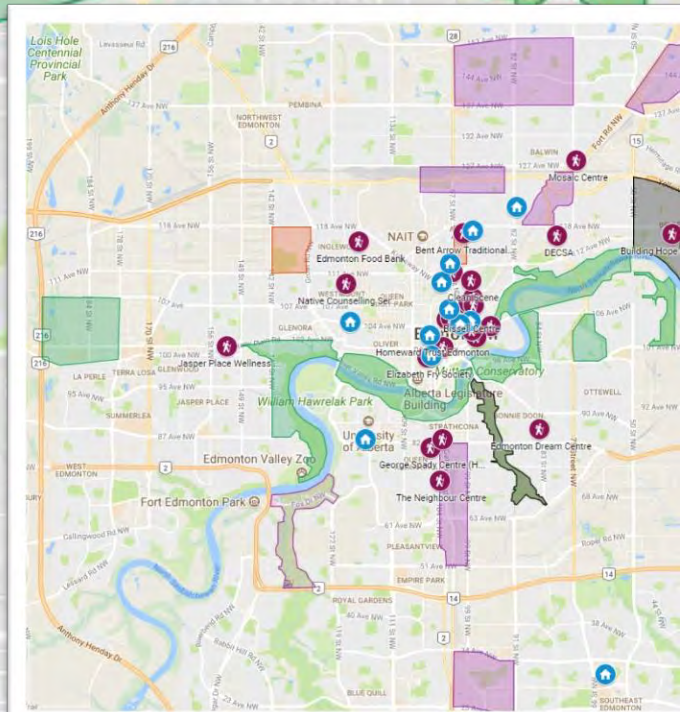
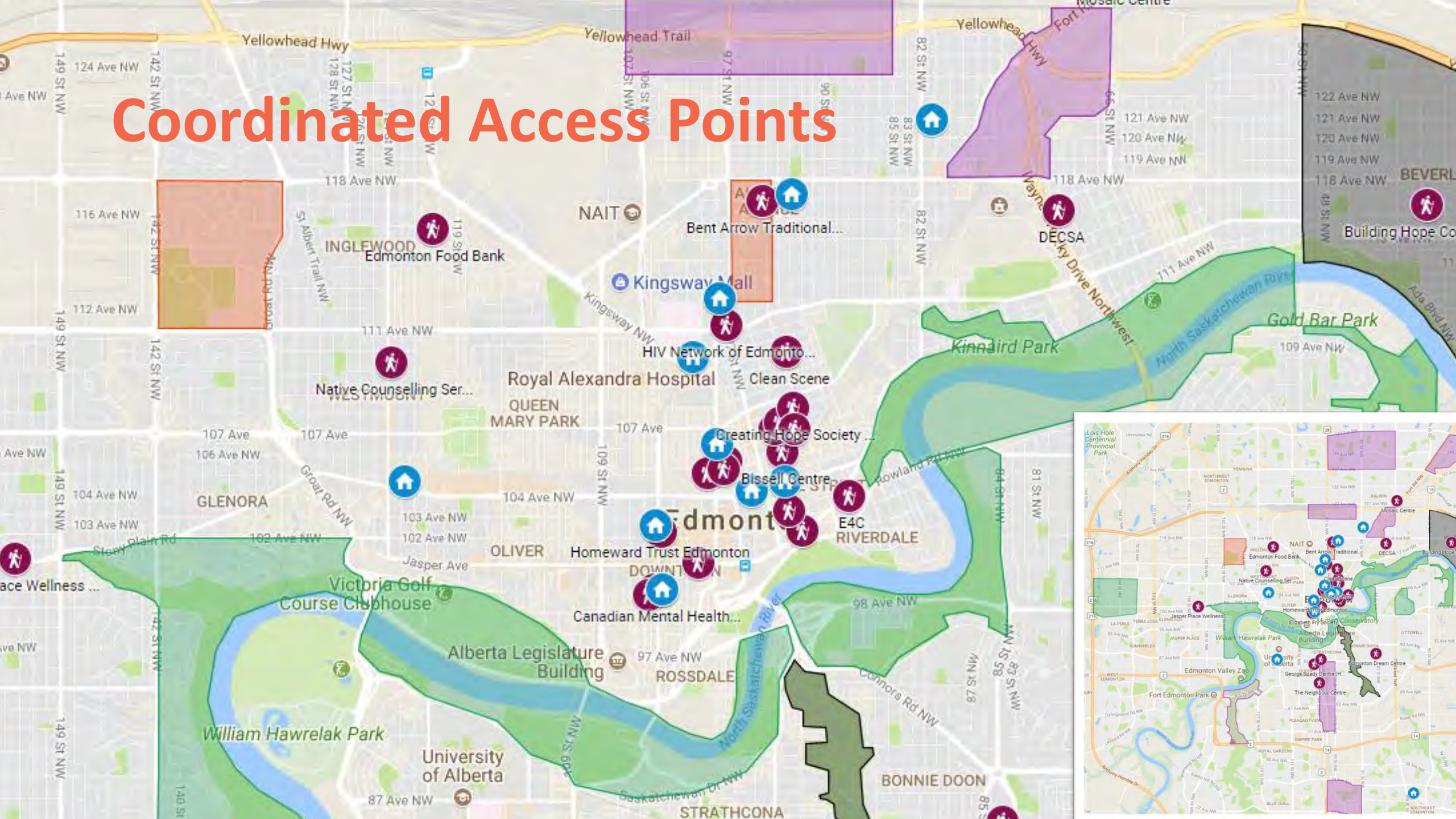
Edmonton's Updated Plan is also a shift in approach:

- Adapting and planning in real time
 - Modelling need and investments
 - “Getting upstream” to address inflow
 - Systems engagement
- 
- A large teal-colored geometric shape, resembling a triangle or a mountain peak, is positioned in the bottom right corner of the slide.

Data in Real-time



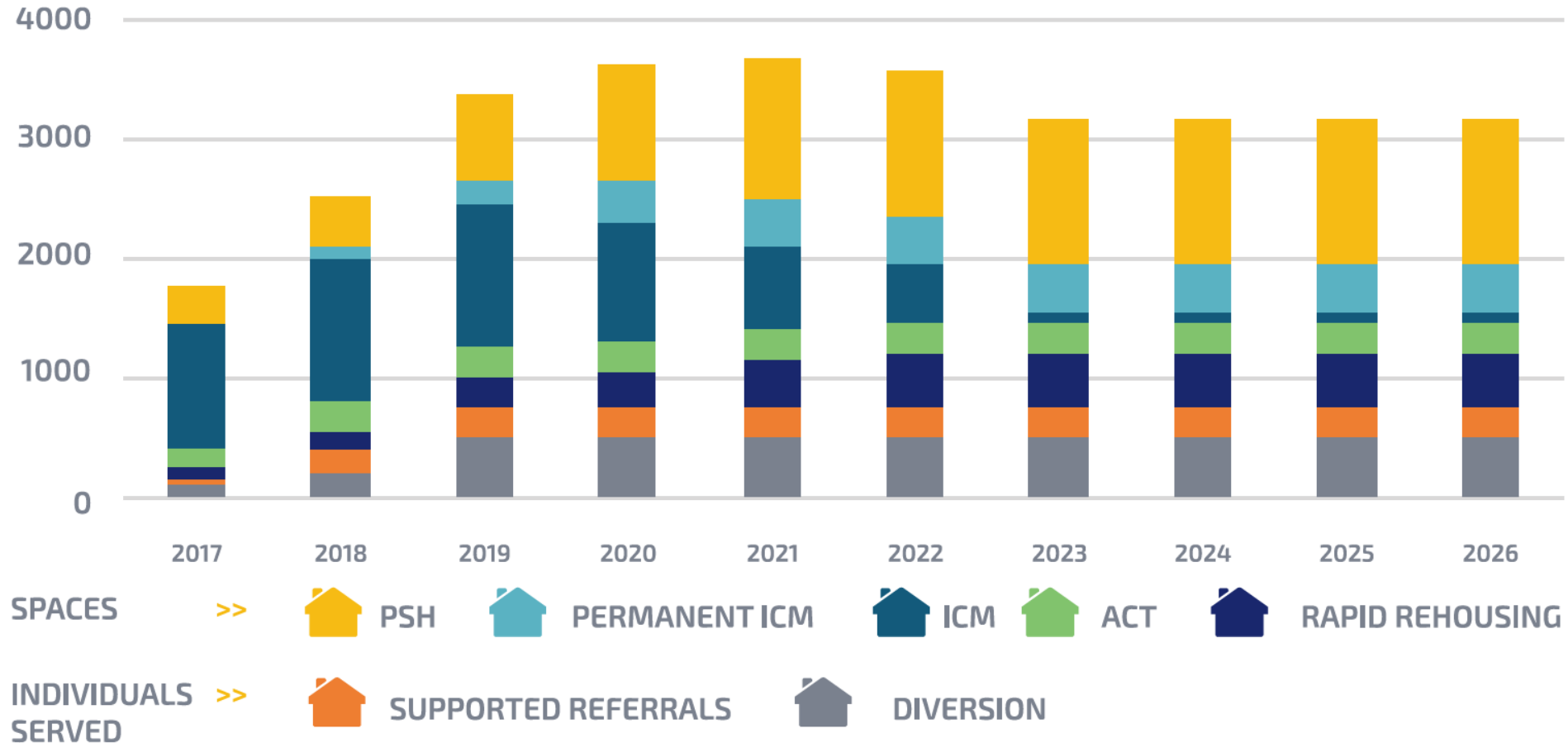
Coordinated Access Points



Modelling Need & Investment


HOMELESS-SERVING SYSTEM CUMULATIVE CAPACITY CHANGES

This chart shows cumulative changes year after year in the homeless-serving system. It shows the number of spaces per program type. Note the reallocations towards PSH and PICM in particular.




Addressing Inflow

Prevention of homelessness:

- “Supported referrals”
 - Diversion as a practice
 - Discharge planning
 - Youth homelessness
 - Demonstrating impact of investing upstream
- 
- A large teal-colored triangle is positioned in the bottom right corner of the slide, pointing upwards and to the left.

Systems Engagement

- Systems leadership
 - Accountability Framework
 - Align resources
 - Real-time information sharing
 - Sharing datasets and analysis
 - Community-wide “By Name List”
 - Lived experience
- 
- A large teal-colored geometric shape, resembling a triangle or a stylized mountain peak, is positioned in the bottom right corner of the slide. It is solid in color and has a sharp point at the top.

The background features a light blue geometric shape that resembles a stylized mountain range or a series of overlapping triangles, set against a white background. The shape is centered and occupies the upper and middle portions of the frame.

Thank You!

EndHomelessnessYEG.ca

HomewardTrust.ca

@HomewardTrust