



homeward trust
edmonton

Edmonton

Making Multi- Governance Models Work

Liam Thompson, Rachael Putt, Rebecca Visscher

NOVEMBER 8, 2023

Ending **Homelessness** in Edmonton

Land Acknowledgement

Homeward Trust respectfully acknowledges we have travelled from Treaty 6 Territory, the traditional and ancestral lands of many First Nation, Métis and Inuit people. We acknowledge the diverse Indigenous Peoples of this land which include the Cree, Blackfoot, Dene, Iroquois, Anishinaabe/Saulteaux /Ojibwa, Nakota Sioux, Inuit, Métis and many others whose footsteps have marked this land for time immemorial. Those whose stories, languages and culture continue to thrive today. We acknowledge ourselves as visitors living and working in this Territory.

Learning Objectives

- Why we need a new Community Plan and how we're working towards it
- How we *actually* make the mixed governance model work, on the ground, in the real world in real time
- Why the City of Edmonton is releasing its first Homelessness Plan shortly after the Community Plan
- How we anticipate the two plans will fit together and complement each other



Edmonton

MAKING MULTI-GOVERNANCE MODELS WORK

How cities and community entities can work together to achieve Functional Zero

The Response to Homelessness in Edmonton



Homeward Trust's Role in Edmonton

Leads efforts to end homelessness in Edmonton

- Responsible for stewarding provincial and local plans to end homelessness

- System planning
- Community leadership
- Data and knowledge management (HMIS)
- Evaluation
- Innovation



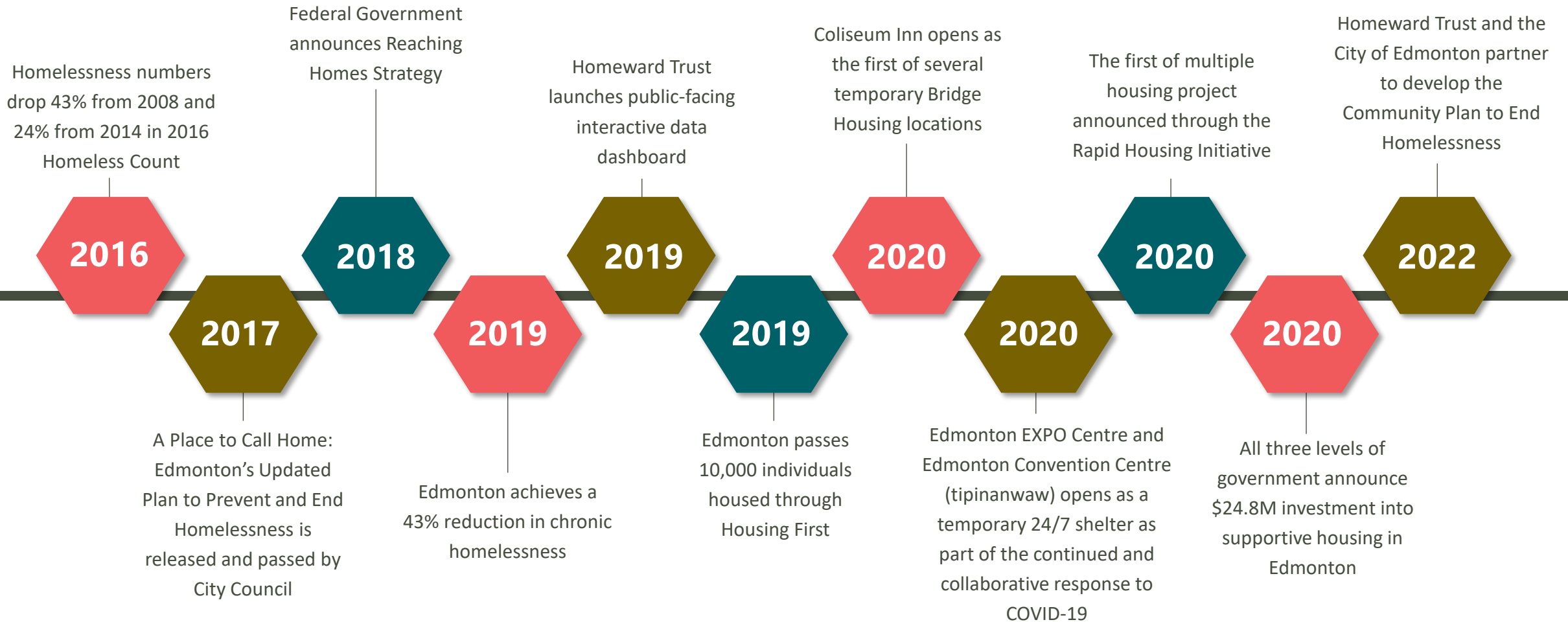
- Stewards and directs funding from 3 orders of government to meet community priorities
- Ensures compliance and contract reporting
- Invests in programs, housing supply, and community capacity

Implementation

- Community planning and engagement
- Review and investment in what works
- Taking risks and learning



Homeward Trust: 2016-Present Day



City of Edmonton's Changing Role

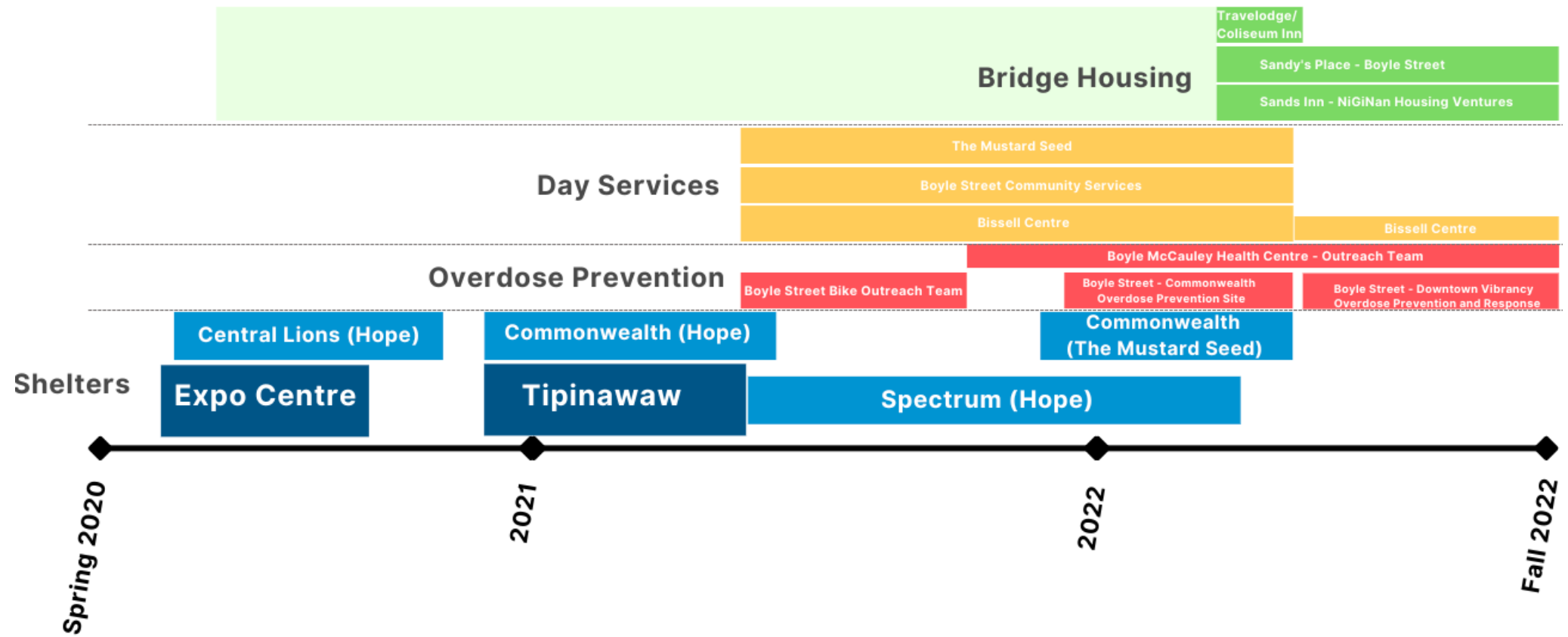
2018: City of Edmonton & Homeward Trust co-led research to inform a revised encampment response

2019: Council direction results in an Extreme Weather Policy to improve City support for vulnerable people during extreme weather events

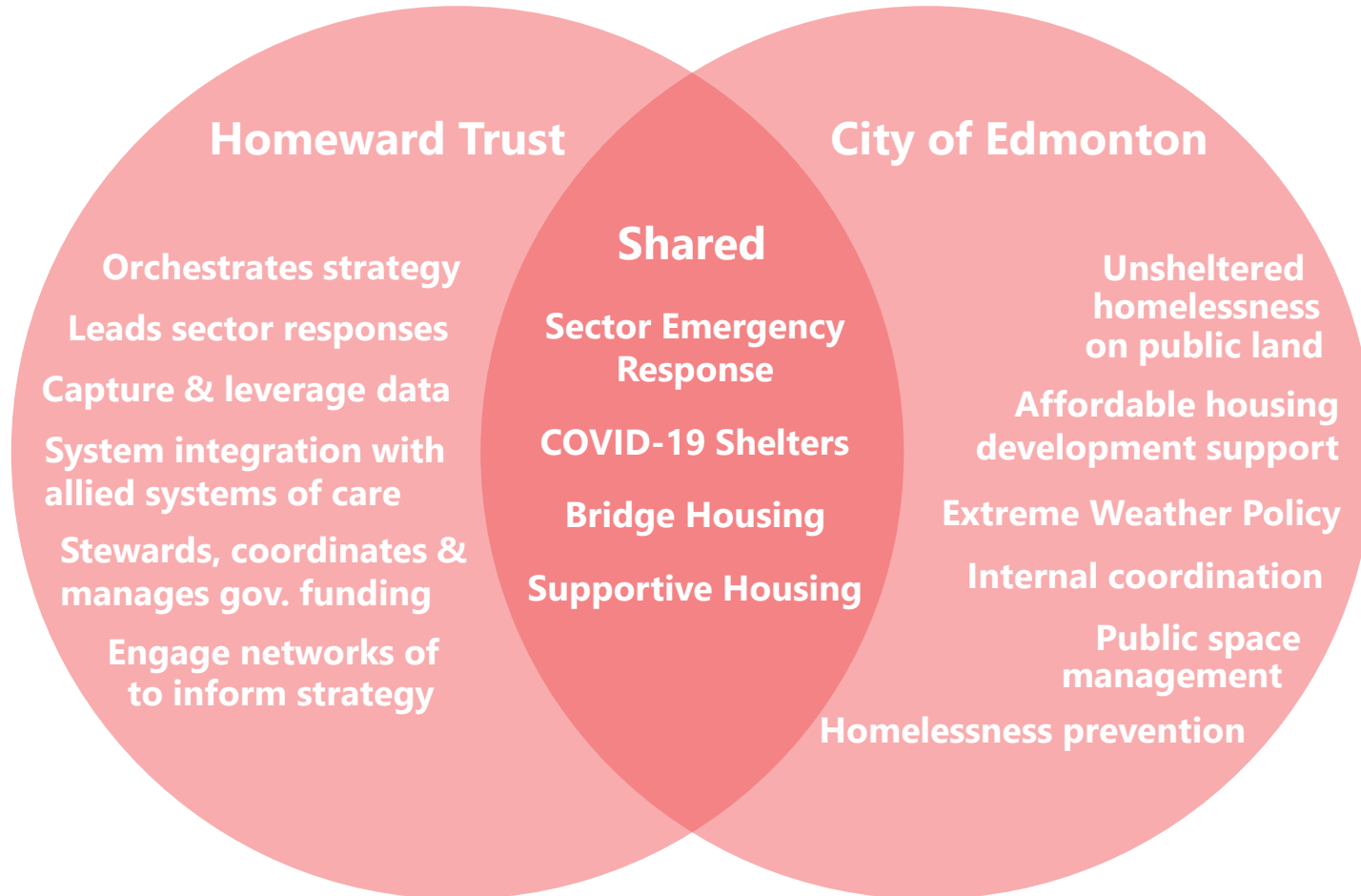
2020: City of Edmonton funds & operates the first extreme weather shelter with support of Homeward Trust and community organizations, expands transit services during extreme weather events

2021: City of Edmonton publishes Edmonton's Minimum Emergency Shelter Standards

Pandemic Impacts



Developing a Shared Approach



Why We Need a New Community Plan



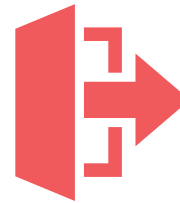
Increases in unsheltered, decreases in sheltered affects intervention types.



Policy changes shifts in governments affecting funding and homelessness rates



Covid-19, affected housing supply and intervention delivery.



System discharges: Increased exits from public systems leading to higher demand of interventions.



Economic downturn: Job losses in oil and gas, housing costs rising faster than incomes.



Societal attitudes: growing awareness affecting public support for strategies

Why We Need a New Community Plan

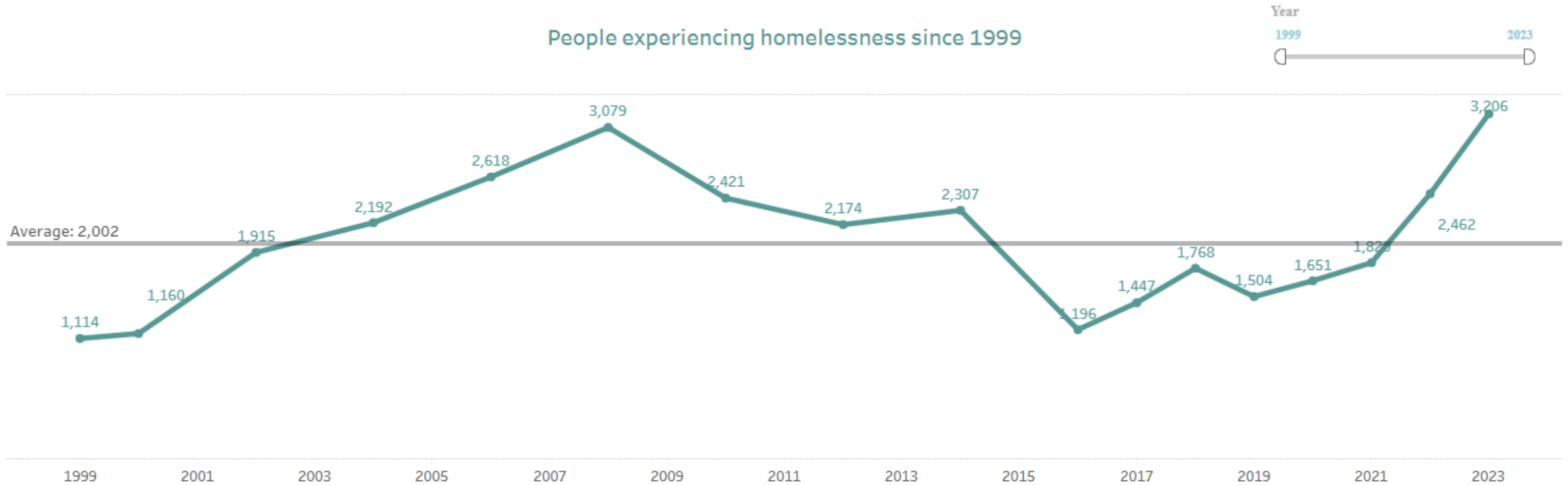


Photo Description/Source: Homeward Trust By Name List: October 23, 2023

Why We Need Our First Corporate Plan

- Expanding municipal response not tied to a proactive planning efforts
- Emergency decision making model increased the number of actors leading responses to homelessness
- **2022:** City Audit of the City of Edmonton's Homeless Response calls for a Corporate Homelessness Plan to define the City role and increase accountability for the work

Why We Need Our First Corporate Plan

- Community Safety and Well-being
- "Costs of homelessness"
- Internal engagement
- Jurisdictional scan

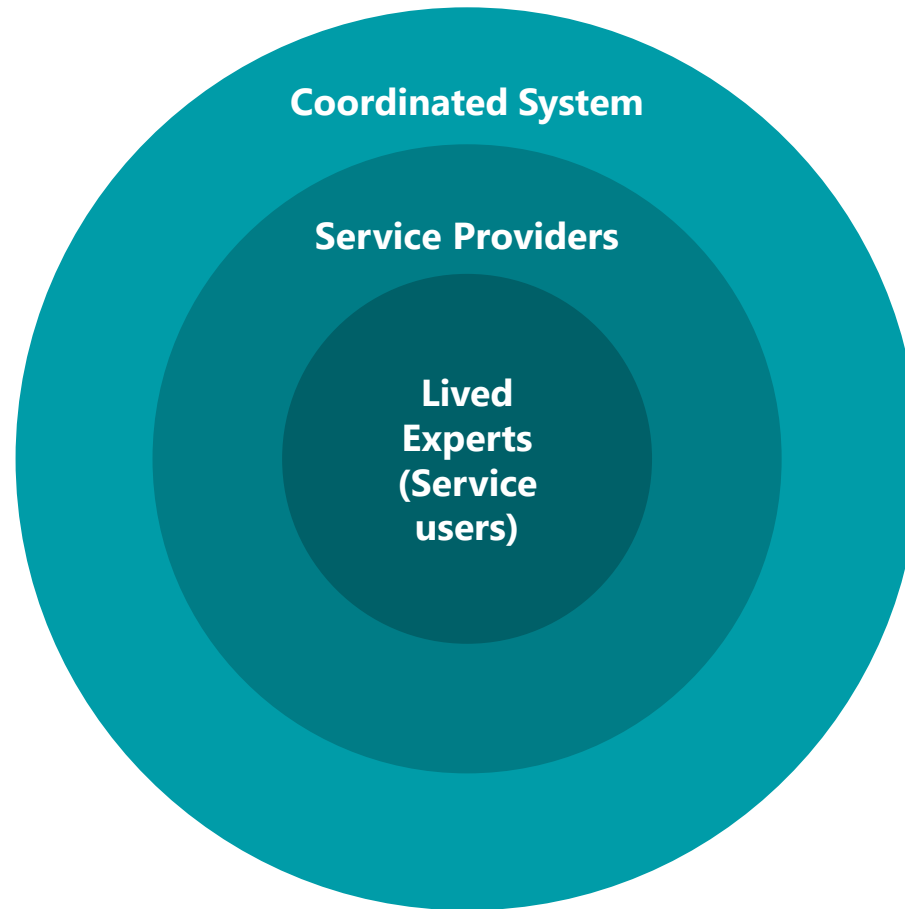


How We're Doing a Community Plan



- Indigenous led engagement
- Starting in ceremony
- *keoukaywin* - The Visiting Way (Dr. Cindy Gaudet & Omushkego peoples of Moose Cree First Nation)

How We're Doing a Community Plan



Problem Solving Together



- Everyone is busy!
- Working with consultants
- The regular work continues
- Data sharing
- Pivoting

How the Plans Fit Together

Community Plan

provides strategic direction, role clarity, and assignment of accountability for all actors who make up the homeless-serving sector in the pursuit of ending homelessness.



Corporate Plan provides a blue-print for specific actions the City of Edmonton will take to support ending homelessness, and an evaluation and accountability framework that will align with the Community Plan.

What We Can Expect Next



Bringing the Plan back to the community & accountability



Developing a sustainable governance model



Doing the work

Thank You!

— Rachael Putt, Rebecca Visscher, Liam Thompson

rachael.putt@edmonton.ca

rebecca.visscher@edmonton.ca

lthompson@homewardtrust.ca

homewardtrust.ca | [@homewardtrust](https://www.instagram.com/homewardtrust)

