



Exploring Māori and Pasefika Indigenous ways to tackling Homelessness in Aotearoa New Zealand

Fred Astle – Judy Mataia



Visionwest
Waka Whakakitenga

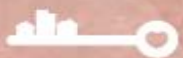


LinkPeople

An artistic illustration featuring a large, stylized sun with a human-like face in the upper left, composed of orange and yellow swirling patterns. Below the sun, several small black birds are flying. On the right side, two large, dark red, spiraling fern fronds curve upwards. The background is a light blue sky with a faint, textured pattern. The foreground shows a reddish-brown ground with some dark, pointed shapes resembling grass or reeds.

Maia, Tāiki E!

Housing First Auckland



HOUSING FIRST

AUCKLAND



Tātou kitenga **Our vision**

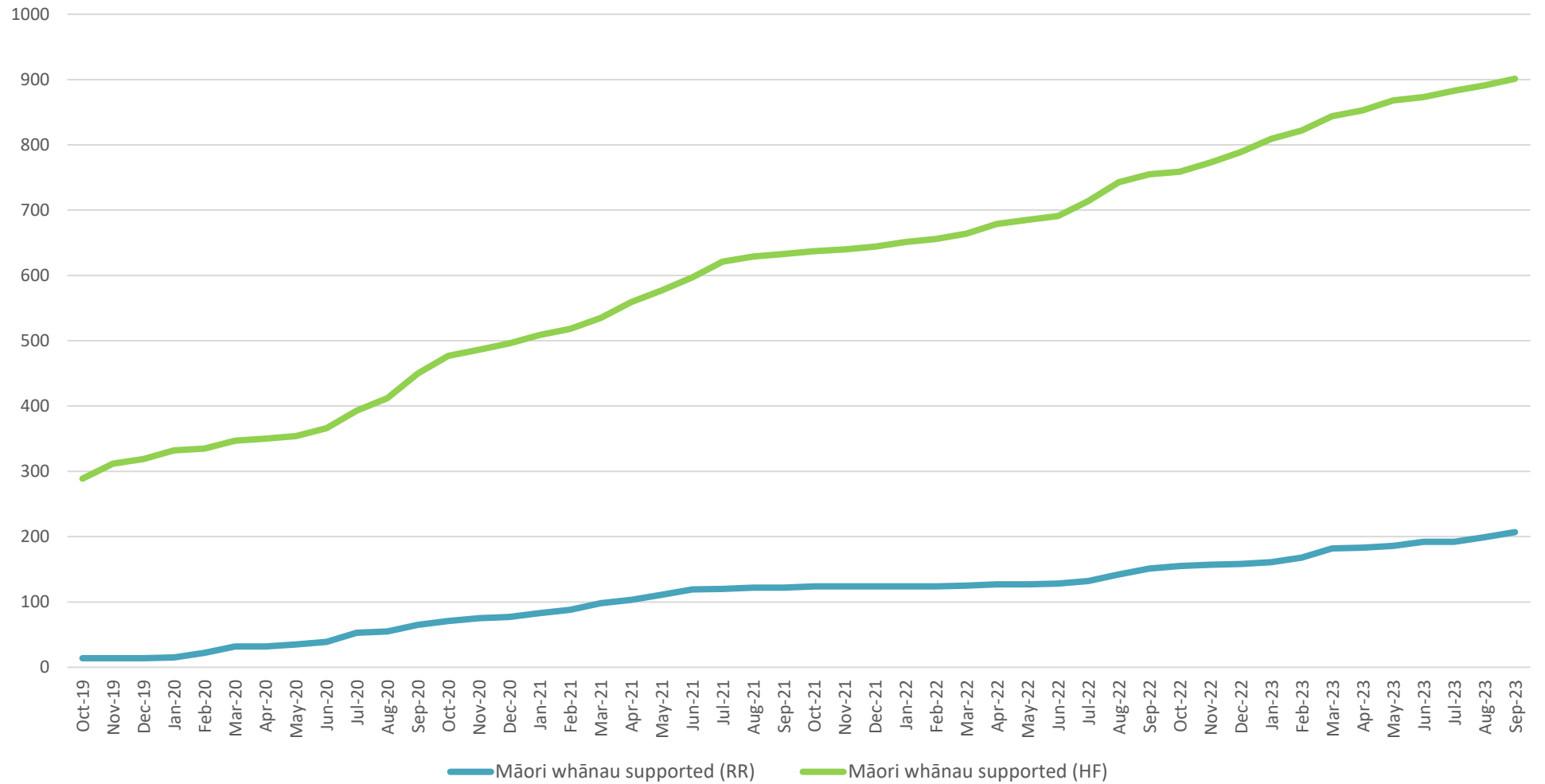
A just and caring Aotearoa where all people have a place to call 'home', to achieve their life aspirations and live their full potential:

whānau whakapuāwai.



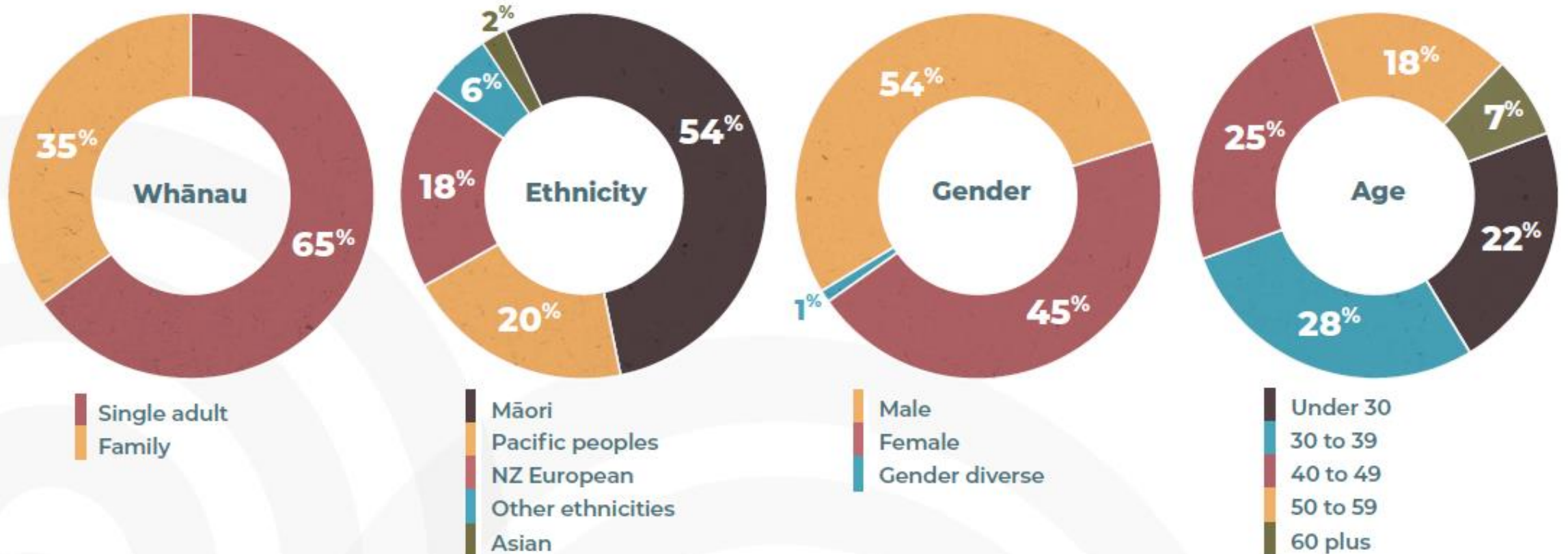


Snapshot of whānau Māori supported in Housing First and Rapid Rehousing



The whānau we support

Whānau permanently housed and / or supported:



We are committed to tangata Māori flourishing.



What is the
root cause of
homelessness
for Māori?



Impacts of Colonisation



Indigenous and collective bridge solution



Tāiki Framework



Tāiki

Kōkiri ki runga

Kōkiri ki raro

Whakamaua kia tina! Tina! Haumi e, hui e! Tāiki e!

Tāiki is a kaupapa Māori framework supporting Housing First Auckland to collaborate cohesively in a Māori-centred way.

Ara Tikanga (Cultural Concepts)

Rangatiratanga

Supporting people's self-determination. Respecting people's right to make choices. Empowering and enabling people to fulfil their choices.

Whakawhanaungatanga

Allowing for the opportunity to initiate, connect, foster and build positive connections that sustain ongoing supportive relationships. Sense of belonging.

Manaakitanga

Enhancing someone's mana through honouring and respecting by demonstrative acts of generosity and thoughtfulness. The word is comprised of two words - mana (inherent self-worth) and aki (encourage and uplift).

Solutions



01



Partnership

Treaty Centric
Government
Strategic, Pragmatic
Transformational

02



Rongoā Māori

Mātauranga Māori
Traditional Knowledge
& Practices – Whānau
Ora Approach

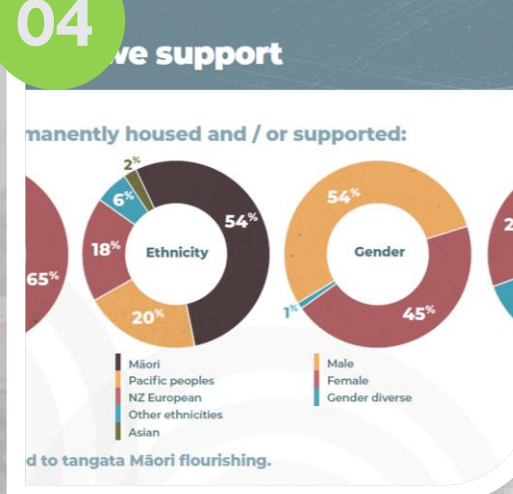
03



Home Ownership

Papakāinga Model
Eco-Friendly, Carbon
Neutral Homes
Personal Economies

04



Insights-Analytics

Māori Data
Sovereignty
Emerging Trends,
Impact Reports



Ā tātou whainganga rangatira Our shared priorities

Deepen our relationships with Te Ao Māori, Hapori Māori, iwi and hapū

Deepening our relationships with Te Ao Māori, hapori Māori, iwi and hapū will support whānau to achieve a strong sense of kāinga, whakawhanaungatanga, and rangatiratanga on their journey to whakapuāwai

Our collective actions

The following pou will support this priority:

Grow Māori leadership

Grow, develop and maintain Māori leadership, governance, and decision making across the Housing First Auckland Collective

Evidencing outcomes for Māori

Evidence, monitor and report outcomes for Māori through good data and measurement systems, using clear and engaging reporting across a range of channels

Build cultural capability

Develop, deliver and evaluate a cultural capability programme to strengthen knowledge and practice in Tāiki and mātauranga Māori

Build strong relationships with Māori

Partner with Māori stakeholders to optimise Māori responsiveness and increase connection to whānau, hapū, iwi and whakapapa

Ending homelessness in Tāmaki Makaurau

Housing First Auckland is a collective of non-government organisations working together so that everyone has a place to call 'home'. We would welcome the opportunity to discuss addressing homelessness with candidates across all parties.

Kotahitanga: Our Collective:



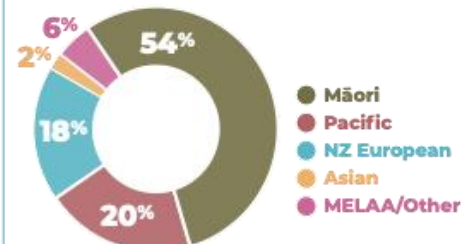
LIFEWISE



wisegroup.

The evidence shows it is more effective to address complex needs, such as mental health and addiction, when people have the stability of permanent housing and wrap-around support delivered in the community. We primarily work with whānau (people and families) affected by chronic and episodic homelessness. Transitional homelessness is supported through our Rapid Rehousing programme, which is a vital programme to prevent situations from worsening.

Whānau we support



The Housing First approach works

1,272 households housed permanently since 2017, including **1,055** children



851 households currently supported

92% remain housed after six months

How does it work?

Housing First is evidence-based and globally recognised

Five core principles for success

- Immediate access to housing with no housing readiness conditions
- A focus on recovery and harm-reduction
- Facilitating social and community integration
- Providing support tailored to the needs and aspirations of whānau
- Enabling whānau self-determination for housing and support choices on their journey to independence

We use a kaupapa Māori approach - Tāiki - to deliver Housing First in Tāmaki Makaurau from te ao Māori perspectives.

Applying the Housing First approach in Finland has reduced homelessness by **80%** since 1985

About us

Housing First work started, with Government funding through the Ministry of Social Development (prior to the establishment of the Ministry of Housing and Urban Development).

Services expanded to support more than 2000 whānau into Covid-19 accommodation.

Maiea, Tāiki E!, Māori-led strategy launched to support whānau experiencing homelessness.

Key facts

- More than 40,000 people are experiencing some form of homelessness in Aotearoa
- One in four NZ households receive some housing support for shelter
- NZ spends over \$4bn annually on housing subsidies that are not creating long term outcomes

Independent research Housing First in Hamilton

An ongoing 5-year study by University of Otago in Wellington and University of Waikato shows improvements in health and justice outcomes:

- ✓ **44% decline** in hospitalisations in 5 years after being housed
- ✓ **63% drop** in mental health inpatient unit bed nights
- ✓ **73% drop** in mental health residential unit bed nights
- ✓ **36% drop** in police offences and **43%** in criminal charges
- ✓ **46% increase** in months in which tax was paid

See www.thepeoplesproject.org.nz/about-us/our-research/

Available in early 2024

Report outlining what a good housing funding policy might look like for Aotearoa

Additional data to further evidence the value of collective impact and the Housing First approach in Tāmaki Makaurau

2017

2020

2023

“We should have no one homeless in this country. One person homeless is one person too much.”

- Peer Support Worker

Learn more about the journey of the people we support



www.housingfirst.co.nz/our-mahi/whanau-whakapuawai/



The land of milk &
honey....
The Pasefika dream in
Aotearoa NZ



The post war migration ... our urban Island village



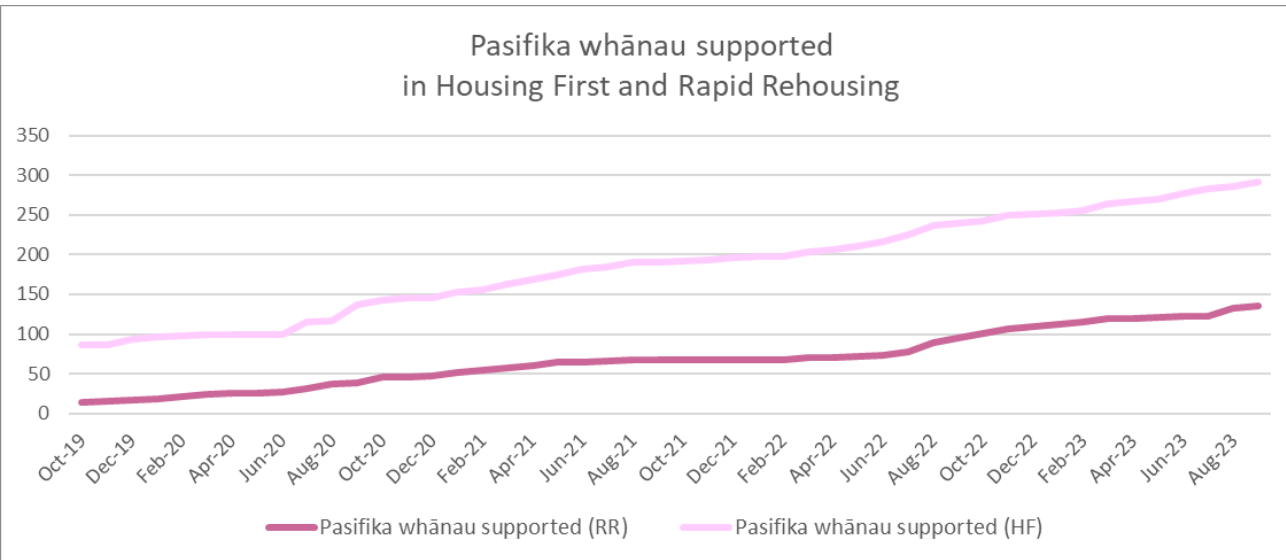
Fast forward to 2023

- A key impact of Auckland's housing crisis: household crowding
- In Tamaki 44% of Pasefika lived in crowded homes.
- Learning from past 3 decades?
- Pasefika values of *Alofa, Respect, Reciprocity, Aiga, Collective Worldview*

○ <https://www.facebook.com/reel/862997725362547>



Dare to dream... holding onto our Pasefika dream



Pasefika Data: Housing First & Rapid ReHousing

Over a 4-year period 2019
– 2023

26% of Total Households –
Pasefika

62% of Total Number of
Children – Pasefika

The vulnerability of our
older Pasefika peoples;
Tagata Matutua

