

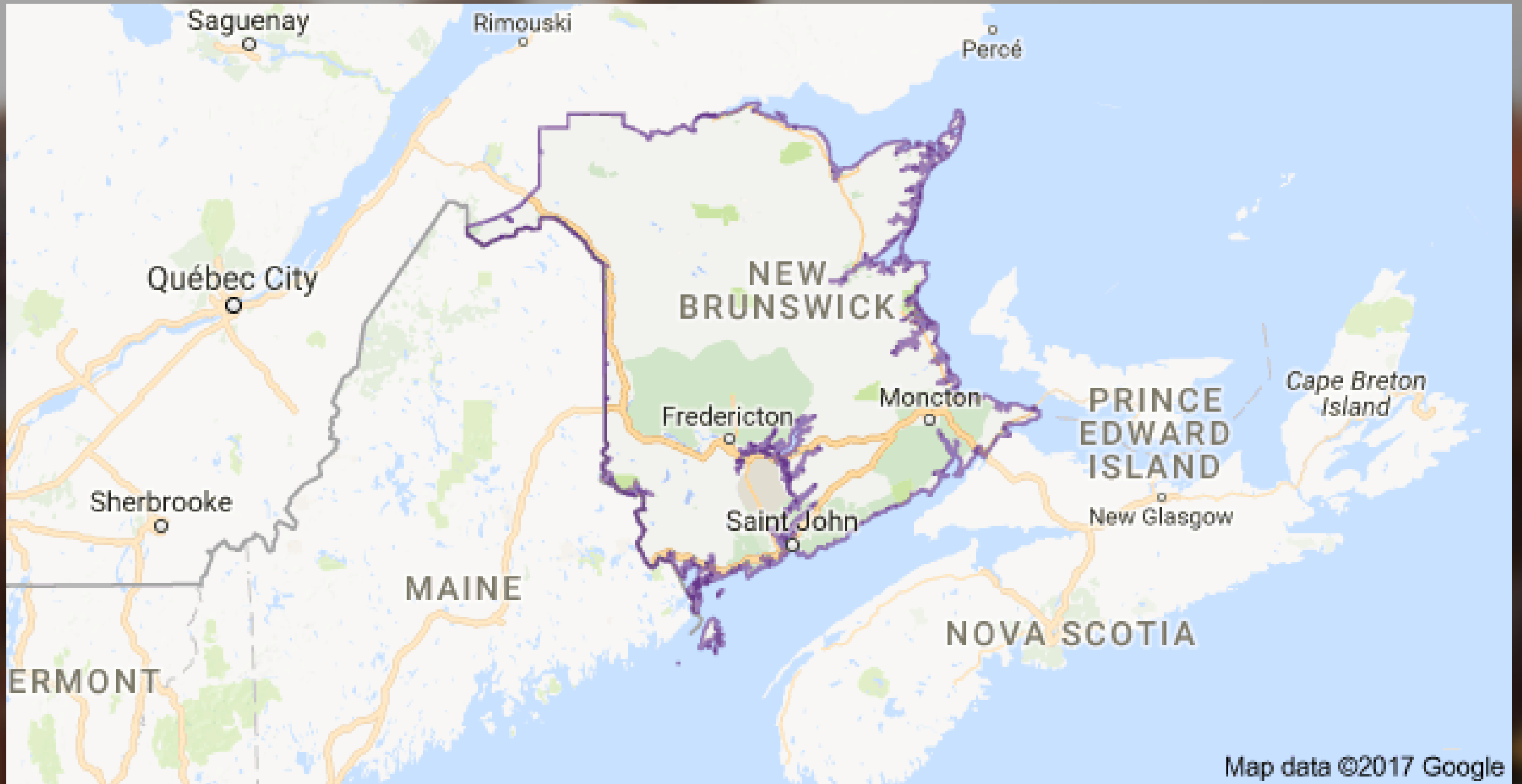


Housing Alternatives Inc.

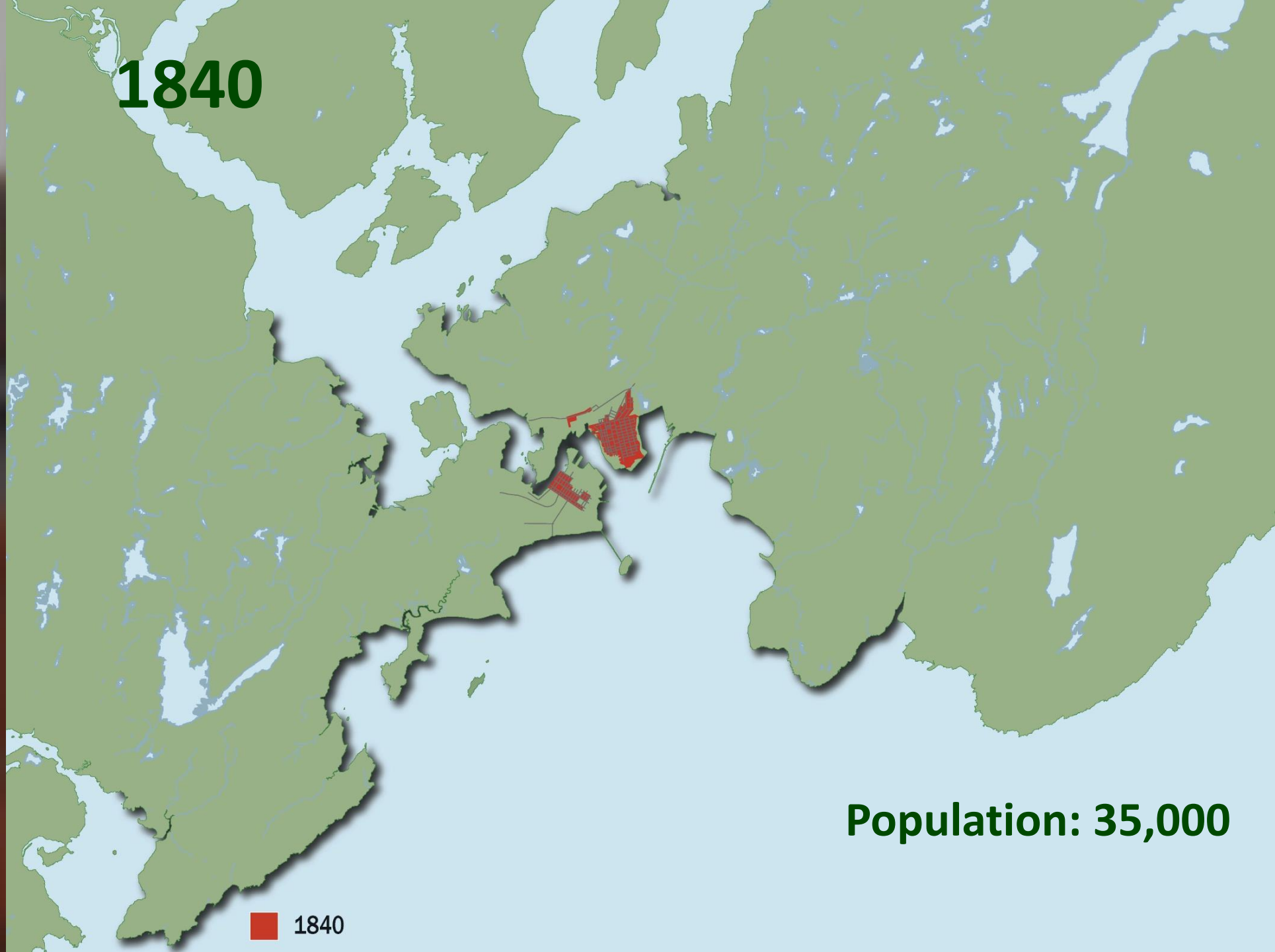
CAEH
2017

Housing First Implementation in Smaller Cities: The importance of Partnerships





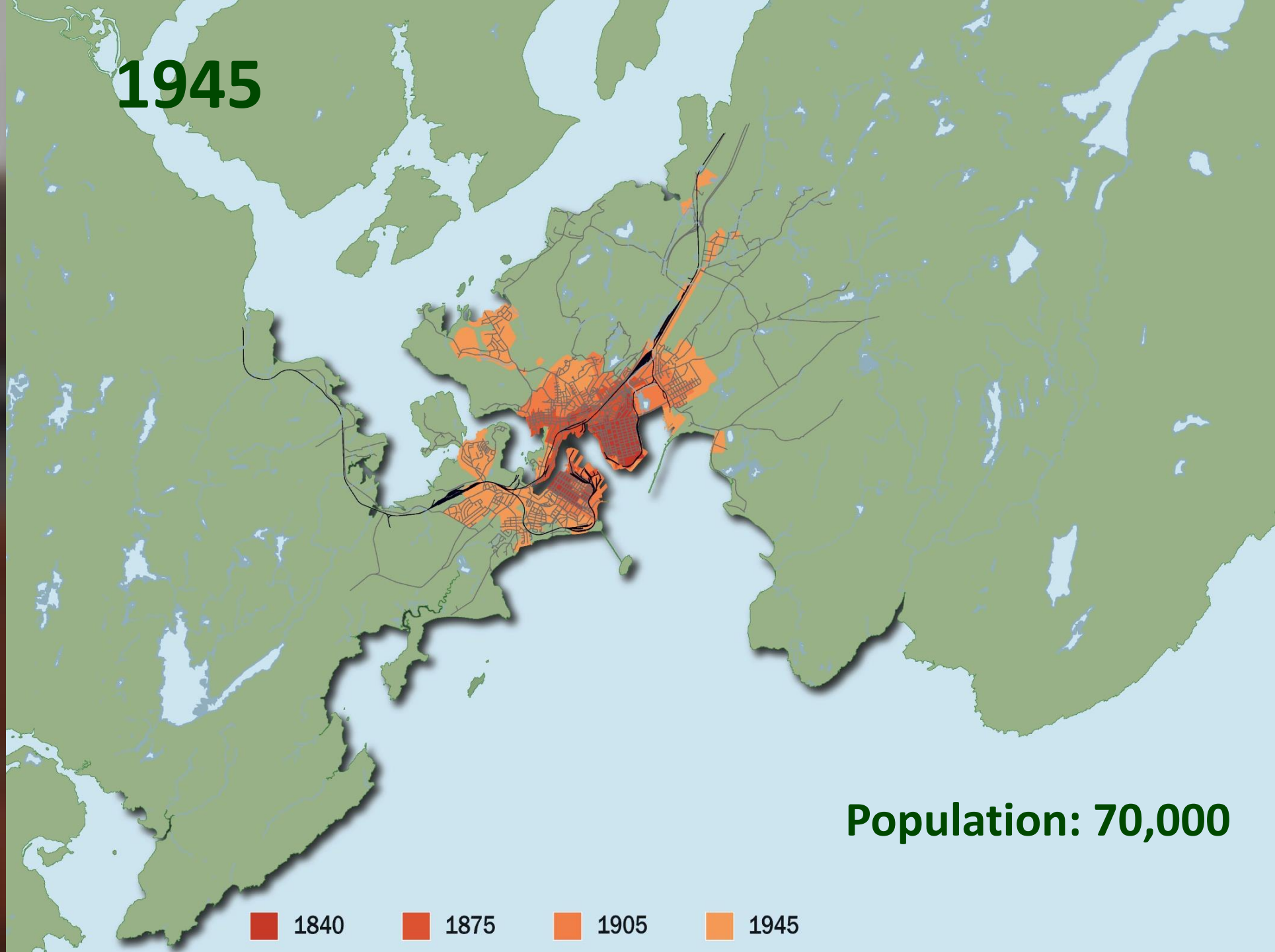
1840



■ 1840

Population: 35,000

1945



Population: 70,000



1840



1875

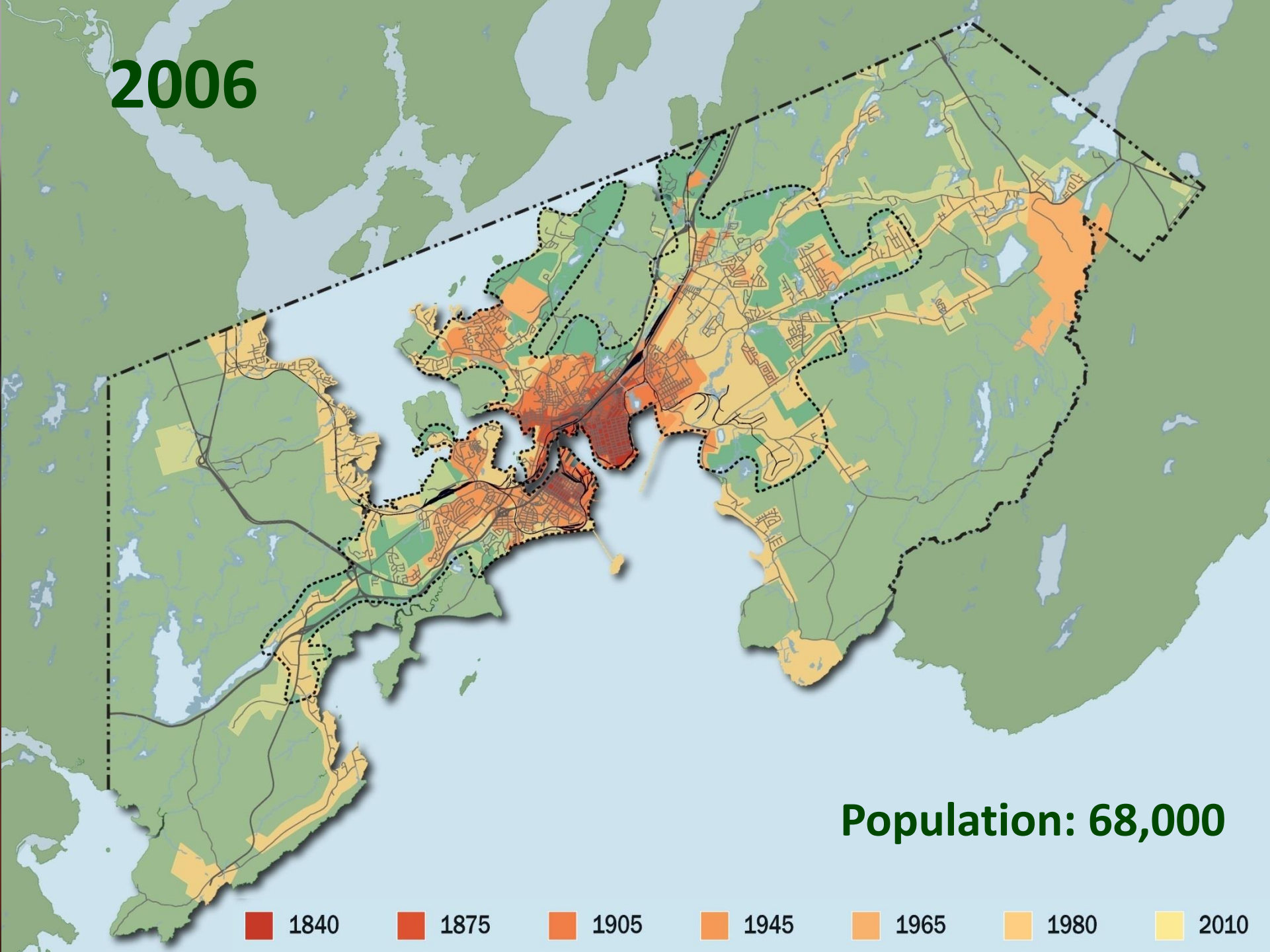


1905



1945

2006



We Have More Land With Fewer People

1951
73,100

36 km²

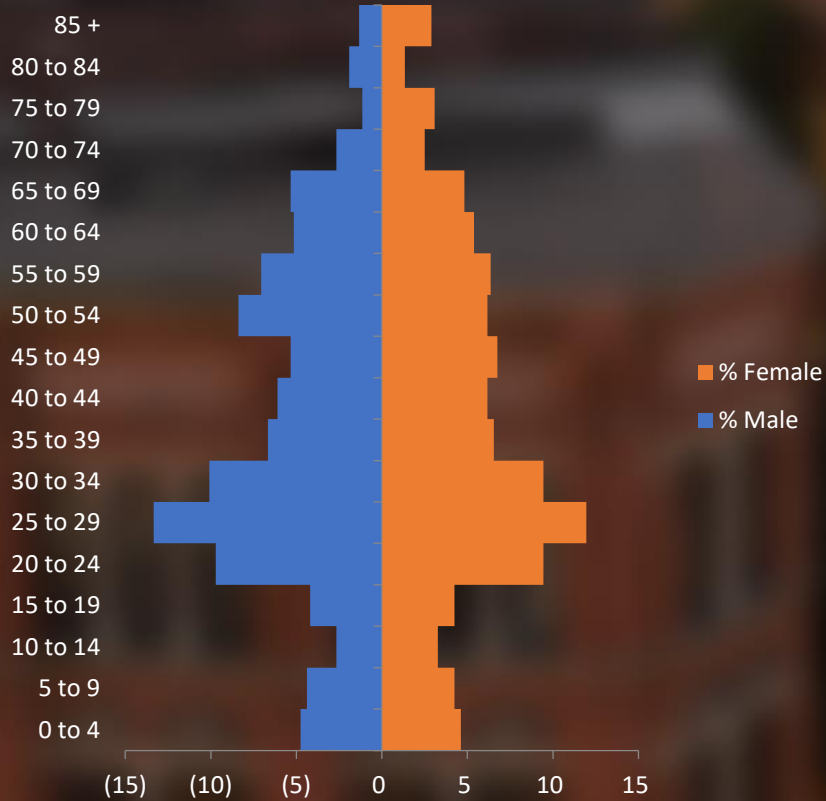
2016
65,575

316 km²

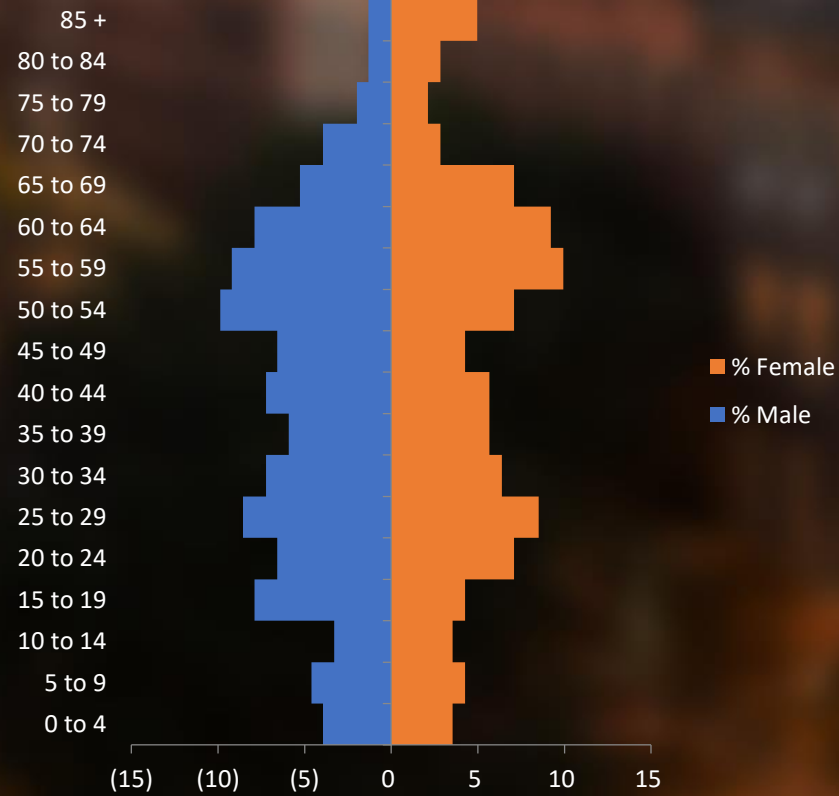


A Tale of Two Age Groups

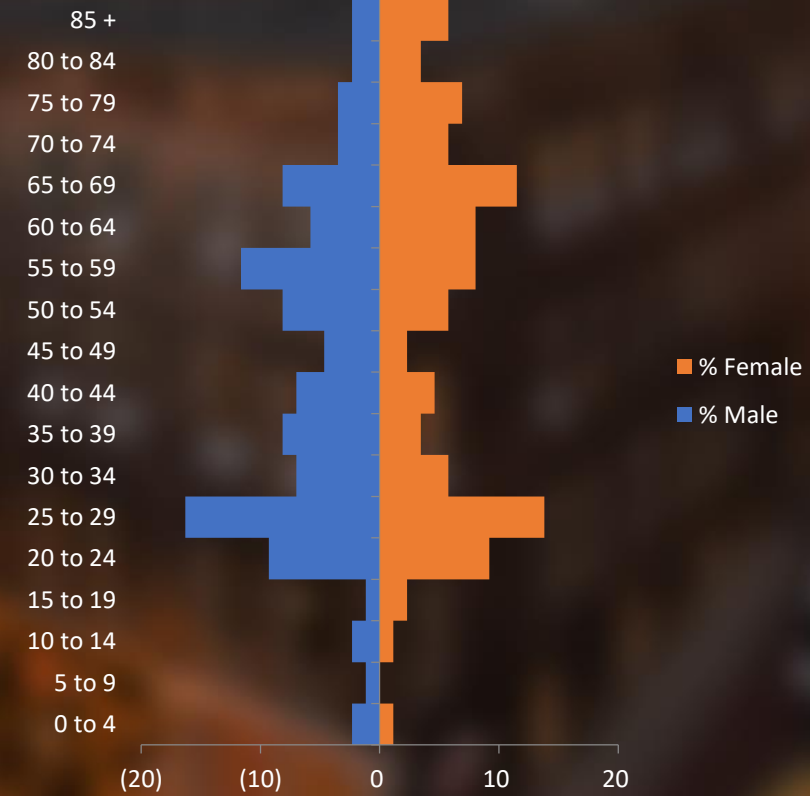
2016 Population Pyramid South End by Age Group



2016 Population Pyramid Waterloo Village by Age Group

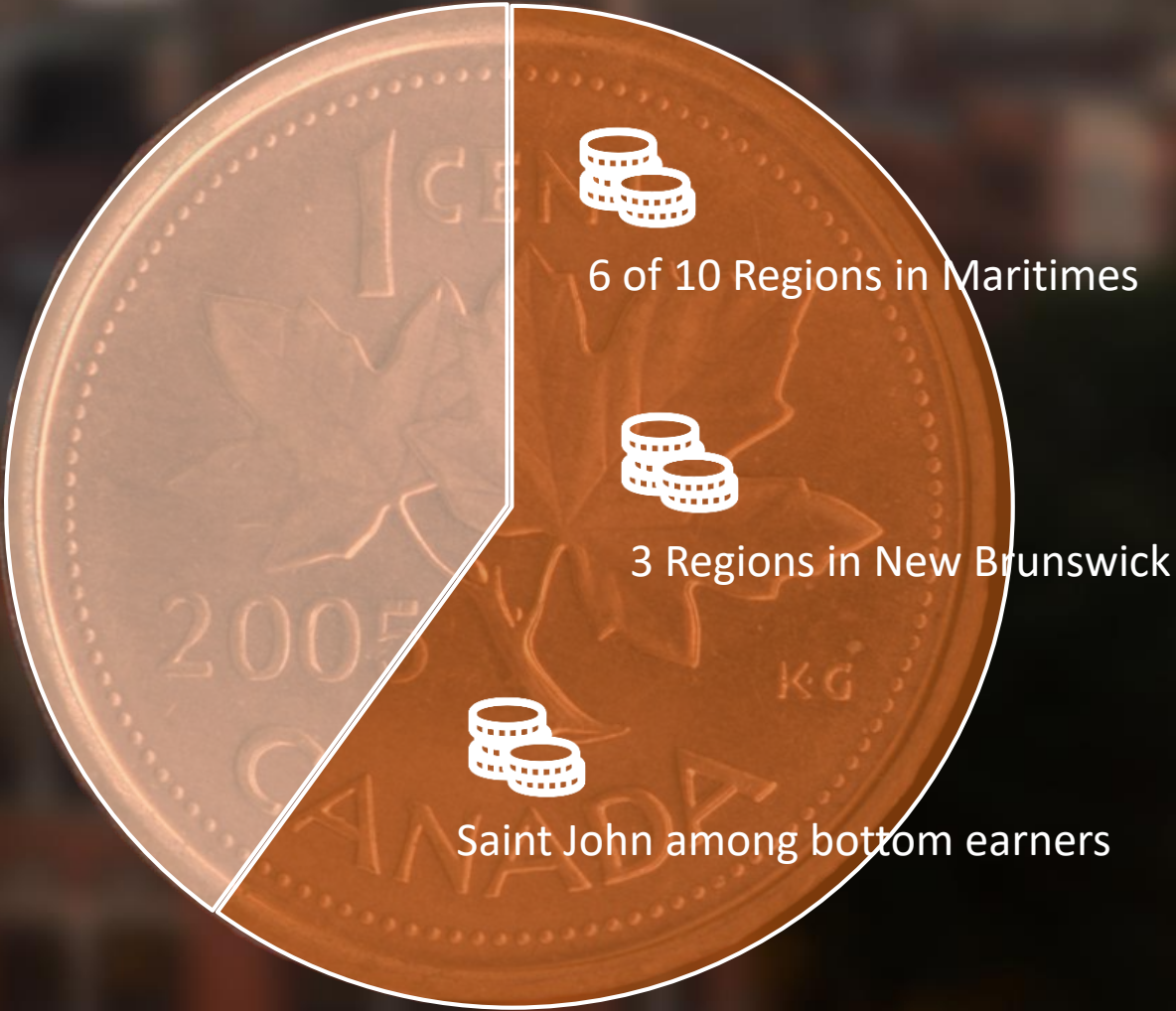


2016 Population Pyramid Uptown by Age Group



Money Matters

10 Lowest Wage Earning Regions



Canada



9.5%



12%

New Brunswick



14%



22%

Saint John (core)



30%



45%





A Snapshot of Homelessness



\$537/mo



\$630/mo



11%

80%



Coverdale Centre for Women

10 beds

80% capacity in 2016

76 unique visitors

22 days avg/year



Outflow Shelter

20 beds

98% capacity in 2016

251 unique visitors

29 days avg/year

PIT 2016

60

unique individuals
absolutely homeless

20%

chronically or episodically
homeless

58%

used a shelter in the past
year



Organized Departure Program

- Implemented Jan 2013 through provincial funding
- Based on the Rapid Rehousing model
- Safe and affordable housing is a first priority
- Time-sensitive case management based on the brokerage model
- 130 individuals housed to date with a stability rate of approx. 80%

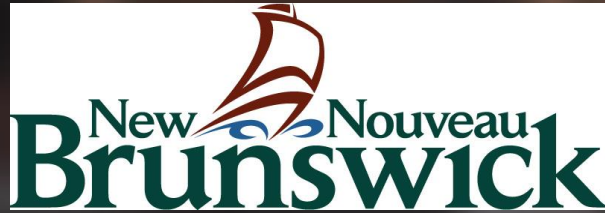
Housing First Saint John

- Implemented Apr 2016 through HPS funding
- Target population: chronic, episodic, and high acuity
- 10 individuals moved and supported each year
- Safe and affordable housing based on client choice
- All barriers to housing removed
- Participant driven, holistic support provided on site
- 19 housed to date with a current stability rate of 95%



Our Formal Partners

The Department of Social
Development



The Greater Saint John
Community Foundation



Surplus Furniture



Horizon Health



The Saint John Learning Exchange





Lack of access to healthcare
Low literacy
No ID
Transportation
Mental health issues
Addiction
Intellectual and learning disabilities
Lack of engagement
Physical health issues
Isolation
Poor hygiene
Apt maintenance
Poor nutrition habits



Communication
Self-management
Adaptability and problem solving
Confidence and self-esteem
Nutrition and food prep
Cleaning
Pet care
Budgeting
Personal care











Our Community Partners



Fresh Start Services
For Women Inc.



What Have We Learned?

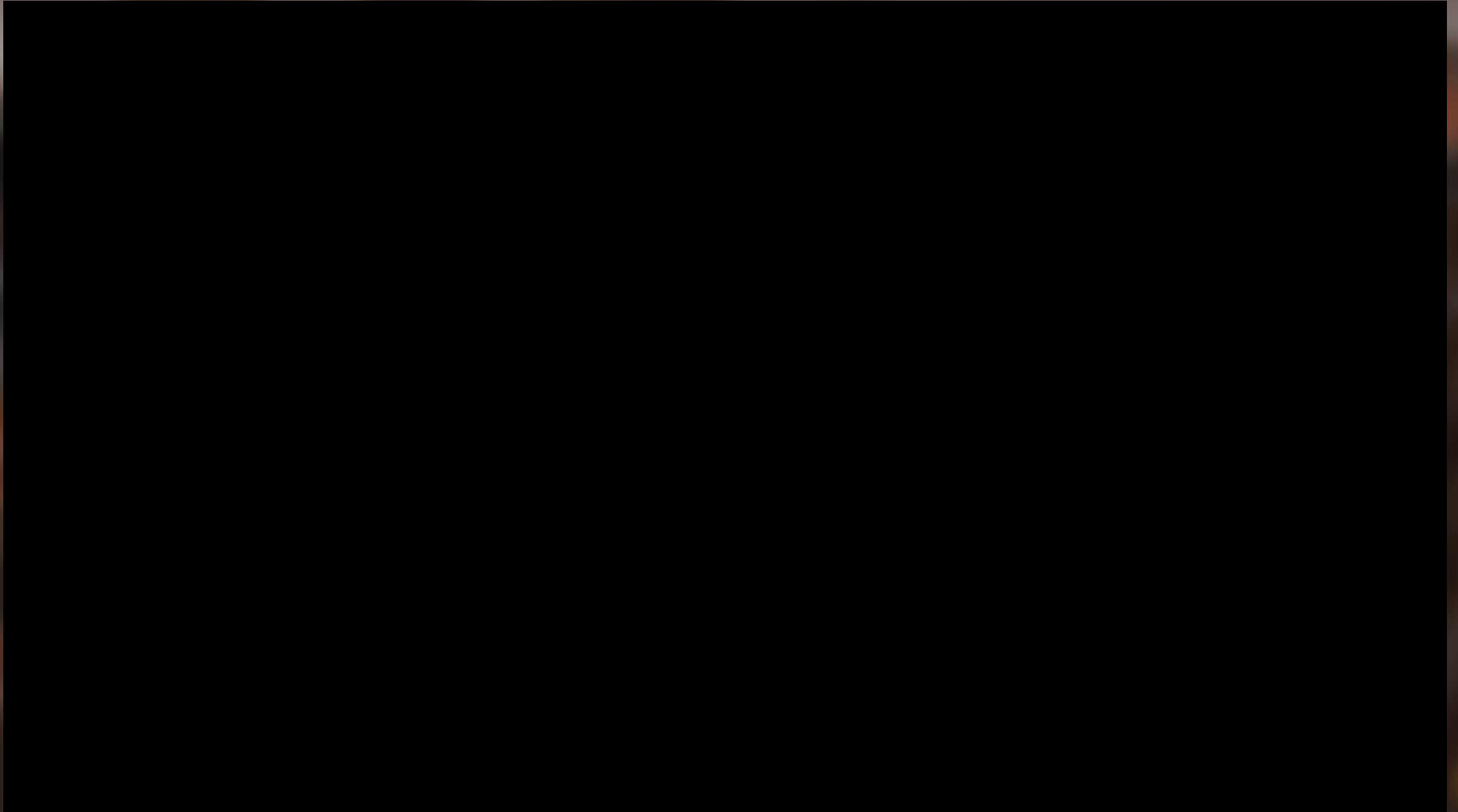
① Housing ain't easy

② Flexibility is vital

③ Never underestimate the power of coffee



Guiding Principles...or Principle





Housing Alternatives Inc.

www.housingalternatives.ca

Ben Appleby

Housing Coordinator

bappleby@bellaliant.com

506.977.1284