



**CAPACITY
BUILDING
for
HOUSING
FIRST
LAUNCH**

County of Simcoe Profile



The County of Simcoe Geographically is almost the same size as P.E.I.

The County make up includes 2 cities and 16 smaller municipalities, with large rural areas.

Total population is 440,000

Advantages & Challenges – Urban/Rural



Advantages

Challenges

Urban

More capacity for community partners
Easier access points
Transportation

History of being disjointed
Like herding cats (lol)
Higher cost of housing &
Low vacancy rate

Rural

Less street homelessness
Lower housing costs
- often substandard

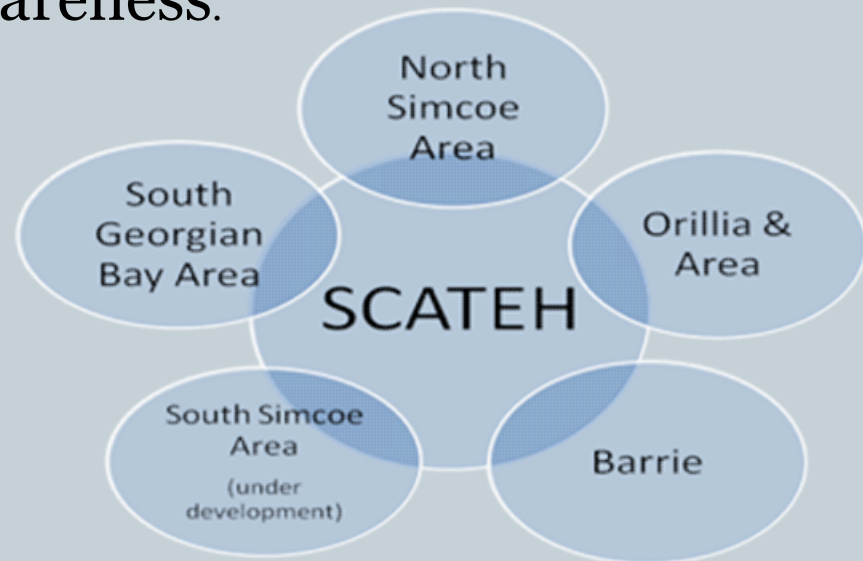
More hidden homelessness
No appropriate transportation
No emergency shelters
Large geographical area to cover

Simcoe County Alliance To End Homelessness



SCATEH is a local movement to prevent and end homelessness in Simcoe County through coordinated strategies, advocacy and awareness.

As a Simcoe County-wide non-profit coalition of over 70 individuals and organizations, the goal is to coordinate a system of care to end homelessness



Imperfect Action Trumps Perfect Planning



Simcoe County, like most areas of the country, is experiencing an affordable housing crisis. The issue is too complex for any one of us to solve alone and SCATEH knew that together, we could find a solution.

As a County-wide collation, SCATEH is uniquely positioned to lead collective impact in our community. There is a need for a coordinated system of care to address homelessness proactively and strategically.

We believe that homelessness is not a given and that not just reducing, but ending, the crisis is achievable.

SCATEH IN ACTION



SCATEH is the Housing First Champion in our community!

SCATEH made a commitment to getting our communities Housing First ready by hiring a Housing First Coordinator who would:

Facilitating **Systems Transformation** in our overall region, with tailored considerations for the differences in our Rural and Remote areas.

Providing specialized **training and development** of our homeless serving agencies management, staff and peer workers to increase **coordinated access** to care and support.

Connecting with landlords and developers to promote Housing First and to connecting the affordable safe units to the individuals that are our most vulnerable by proving community home-based supports to the tenant who require some extra support to be a good tenant and create housing stability for the tenant.

Coordinated People Centered System Design



OVER 2 DAYS, EIGHTY REPRESENTATIVES FROM ORGANIZATIONS THROUGHOUT SIMCOE COUNTY WORKED TOGETHER TO DEVELOP PRINCIPLES AND DESIGN SYSTEMS THAT WOULD BETTER MEET CLIENT NEEDS AND REDUCE DUPLICATION OF SERVICES

Purpose



System Transformation

- System Approaches
- Generate a Shared Vision & Guiding Principles
- Help Services be great, doing the thing they say they do
- Coordinate access, assessment, service prioritization, referrals & focus of housing case management
- Help service providers to understand they do not need to be all things to all people if they work as partners
- Allows the system to coordinate & navigate service access for clients

Principles Developed



- People Centered - What they want –not want they need with no judgment
- Community Centered – easy access
- Housing Stability not just access
- Housing is a right and the Goal of ending homelessness is a priority
- Interagency collaboration – pooling of resources & capacity
- Clarity of role & service provision –understanding the gaps
- Trauma informed services
- Solution focused and transparent
- Client participant in decision making & planning

DAVID BUSBY STREET CENTRE

**Person Centered –
no judgement**



Standardized Assessment Tools



- Service Prioritization Delivery Assessment Tool (SPDAT) developed by OrgCode is now being used in many areas both in Canada & the USA. It has proven to be one of the most effective tools to establish acuity levels and to measure progress of Housing First clients over time.
- 150 people from a wide spectrum of organizations across Simcoe County have now been trained through OrgCode to administer this assessment tool
- 11 people are also now certified local trainers

Housing First Training



To enhance the core competencies of front line staff to meet the needs of the high acuity people who require Housing First supports the following training has been offered to front line housing workers:



- Excellence in Case Management
- Mental Health First Aid
- Trauma Informed Care
- Aboriginal Cultural Sensitivity
- Self Care for workers
- Supporting clients through grief & loss
- Partner abuse sensitivity training

Landlord Connections



SCATEH recognized that work was needed to ensure that landlords are educated on the principles of Housing First and that additional relationships needed to be built with landlords.

To achieve this goal a part time Housing Specialist has been hired to educate and build those relationships.

Key Landlord Communication messages



What is the Benefit to the Landlord?

- Automatic direct monthly rental payments
 - Tenants are sourced and placed for you
- Quick access to a Housing Specialist who will act as mediator and liaison between you and your tenant
 - Stable rental income with a high level of support
- Support for tenants to ensure they have long-term successful tenancies
 - Feel good knowing you are part of the solution



Municipal Partnerships



Partnerships to the County of Simcoe as the Service Manager has been a crucial part of the success of this initiative. The County strongly supports the need to implement Housing First and is looking at ways to move forward i.e. increasing the number of rent supplements specifically designated to Housing First clients



Next Steps

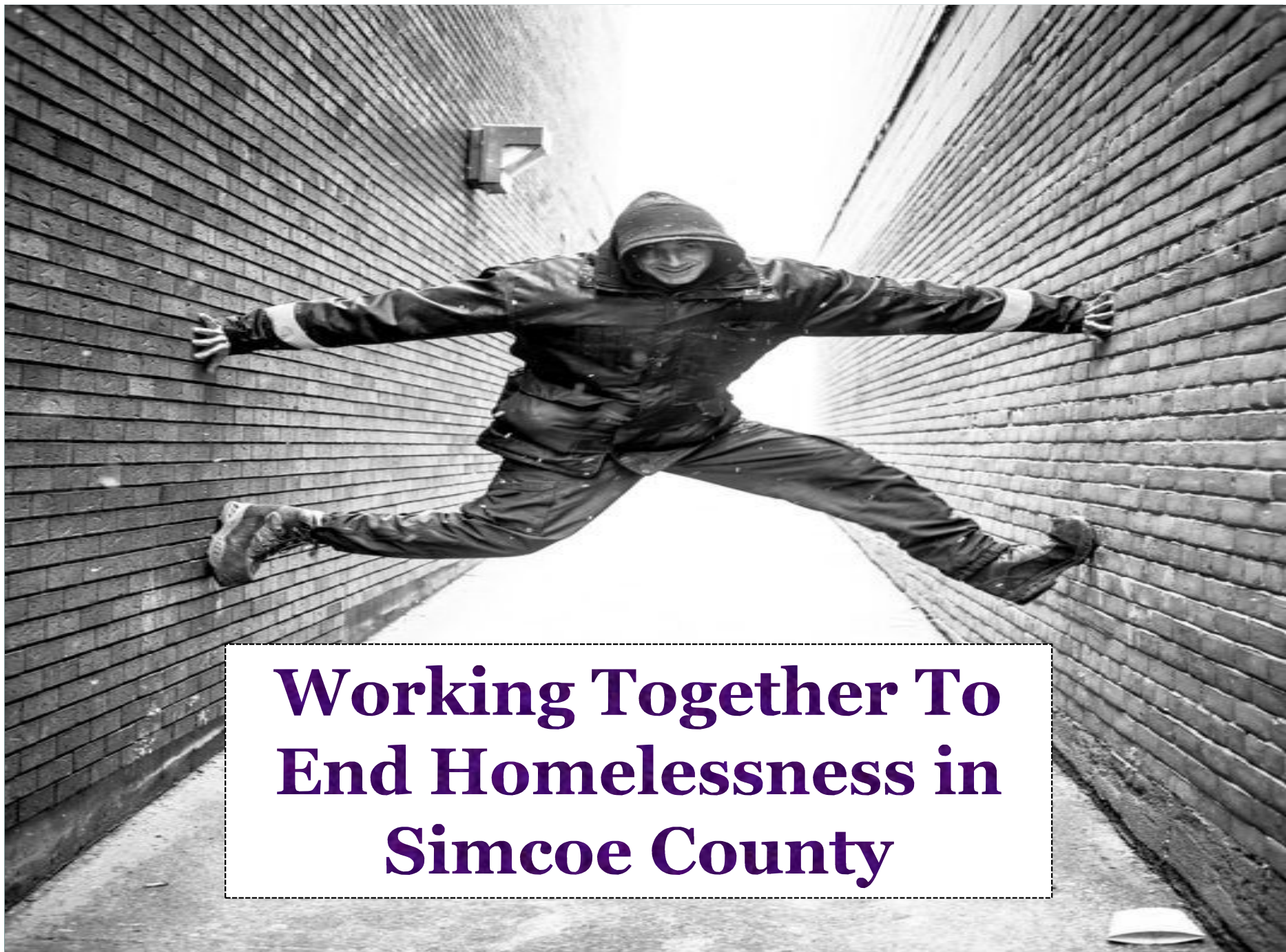


Taking Housing First from philosophy to programming....

Through the 20K Homes Registry Week conducted in January, 2016 100 high acuity people were identified. SCATEH has set a target of housing these individuals by June, 2017.

To move forward SCATEH has identified key next steps:

- Create a mobile team of intensive case managers to provide supports throughout the County as required
- Hire peer support workers to augment the work of the case managers
- Increase the number of rent supplements dedicated to Housing First
- Expand the role of the Housing Specialist



**Working Together To
End Homelessness in
Simcoe County**