

A WAY HOME VERS UN CHEZ-SOI

CANADA



Melanie Redman

Eva's National Initiatives,
A Way Home

Stephen Gaetz

Professor, York University
Canadian Observatory on Homelessness



CONFÉRENCE NATIONALE POUR METTRE FIN À L'ITINÉRANCE
NATIONAL CONFERENCE ON ENDING HOMELESSNESS

MONTREAL NOV.02-04

Part 1

What *IS*
A WAY HOME



ABOUT US:

A Way Home is a national coalition dedicated to preventing, reducing and ending youth homelessness in Canada.

- **Helping communities plan and implement youth homelessness strategies**
- **Supporting adaptation of effective models of youth homelessness prevention**
- **Putting Youth Homelessness on agenda of decision makers**
- **Public spotlight on Youth Homelessness**

Key National Partners



Funders as Partners



**CANADA
FOUNDATION**

A WAY HOME



**builds on the work of the
Mobilizing Local Capacity
project**

2 communities/year, competitive process, pan-Canadian



- Year 1 – Kamloops, BC
Kingston, ON
- Year 2 – Saint John, NB
County of Wellington, ON
- Year 3 – Yellowknife, NWT
Brandon, MB

Shifting Context

1

Conceptual shift taking hold, moving from ‘managing’ homelessness, to “preventing, reducing and ending homelessness”

2

Demonstrated successes in government and community planning

3

Research: Greater knowledge about solutions and effective interventions

4

Enhanced community readiness

5

Increasing collaboration by national partners in supporting those processes

Part 2

*Why we need
to do this...*

Key point: Youth homelessness is distinct from adult homelessness



When we let young people become homeless ...



When we let young people become homeless ...

- **Health worsens**
 - **Mental health declines**
 - **Exploitation**
 - **Greater risk of addictions**
 - **Involvement with the law**
 - **Dropping out of school**
 - **Trauma and criminal victimization**
 - **Entrenchment on the streets**



If the
CAUSES & CONDITIONS
of youth homelessness are
unique, so must be the
SOLUTIONS!!!

Responding to Can we move from this? homelessness



Part 3

The role of

A WAY HOME

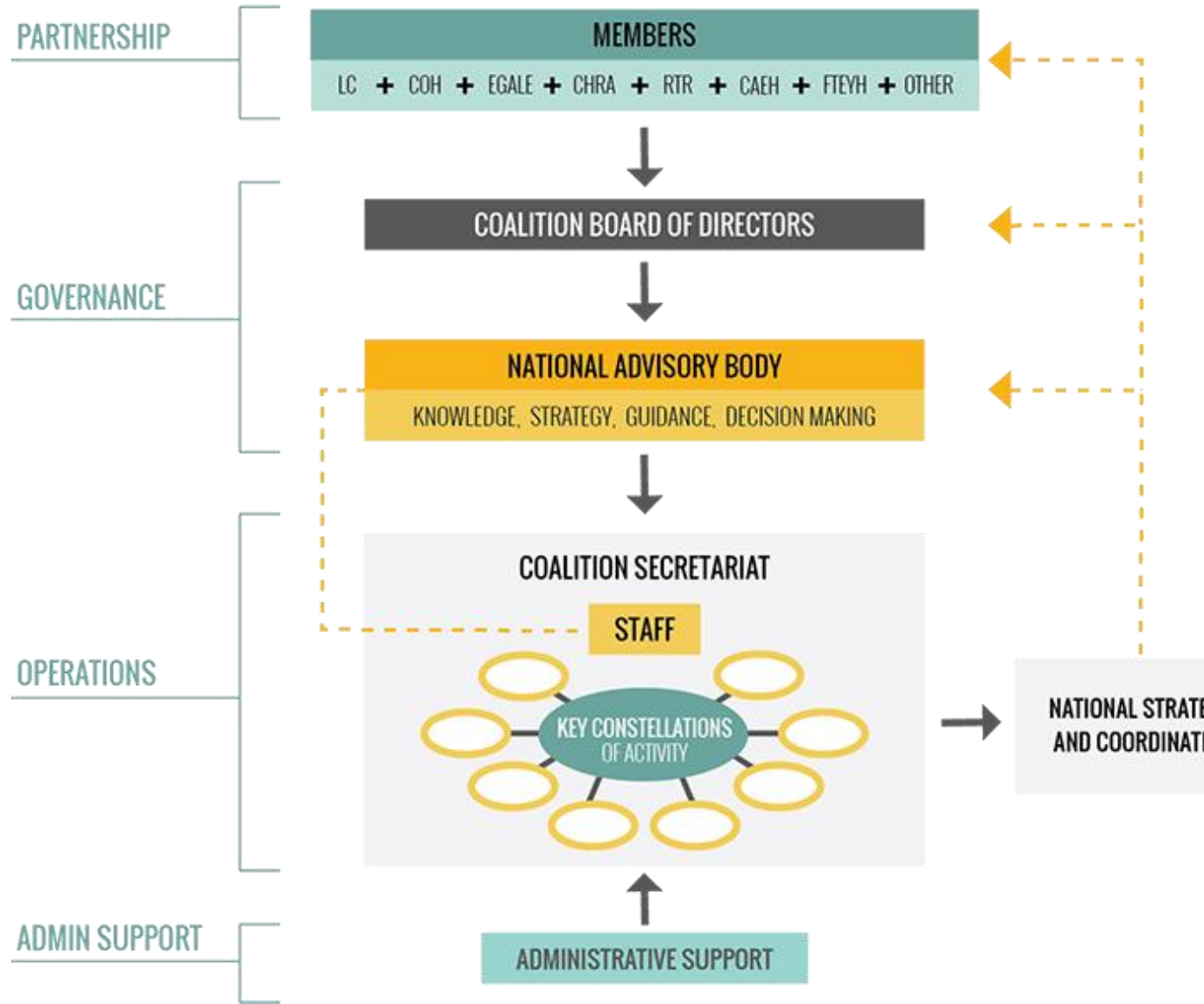


Key Constellations of Activity



HOW we work!

ORGANIZATIONAL STRUCTURE



Key Constellations of Activity



Partnerships and Collaboration

Collective Impact



Collective Impact

Common Agenda



All participants have a shared vision for change, a common understanding of the problem(s), and joint approach through agreed actions and interventions

Shared Measurement

AIAD/ e-Wellbeing
Australian Index of Adolescent Development



A consistent collection of data and measurement of results across all participants and activities – aligned effort and inter-accountability

Mutually Reinforcing Activities



Differentiated activities but coordinated and collaborative through a mutually agreed plan(s) and reinforcing action(s)

Continuous Communication



Consistent, open communication to build trust, keep a focus on mutual objectives and to maintain a common motivation and long-term commitment

Backbone Support




Creating and managing 'collective impact' requires real work and skilled staff to support and coordinate the activities of participating organisations



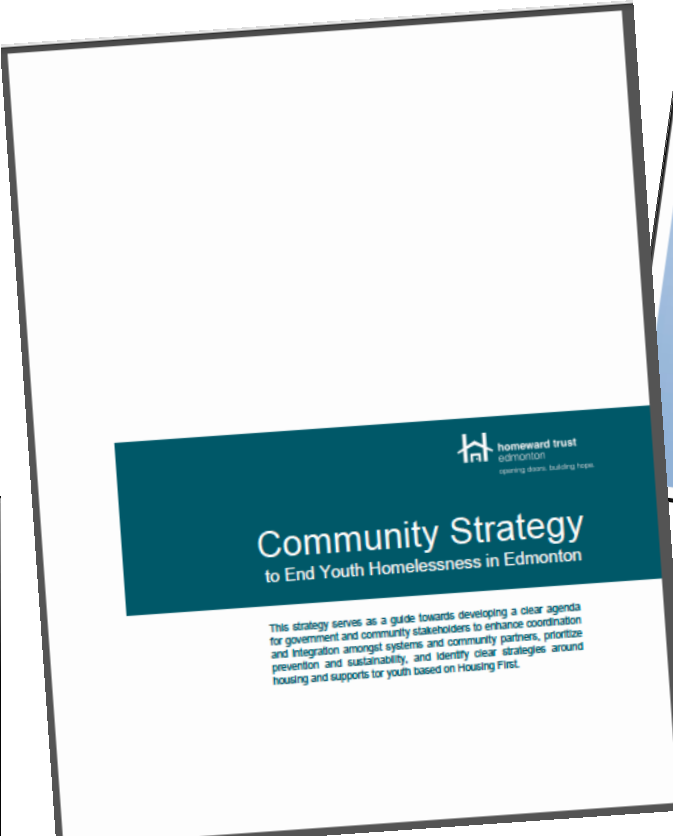
Key Constellations of Activity



Community planning



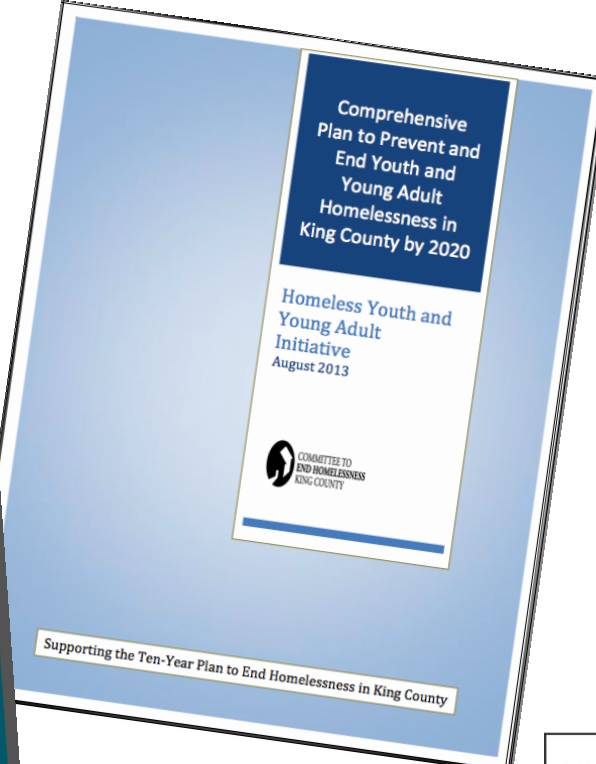
Supporting Healthy and Successful Transitions to Adulthood
A Plan to Prevent and Reduce Youth Homelessness in Alberta



homeward trust
edition 01
learning. sharing. building hope.

Community Strategy to End Youth Homelessness in Edmonton

This strategy serves as a guide towards developing a clear agenda for government and community stakeholders to enhance coordination and integration amongst systems and community partners, prioritize prevention and sustainability, and identify clear strategies around housing and supports for youth based on Housing First.

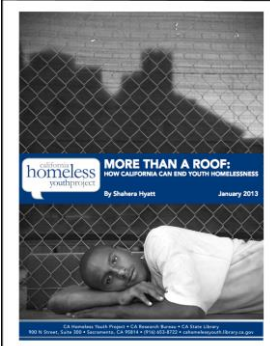


Comprehensive
Plan to Prevent and
End Youth and
Young Adult
Homelessness in
King County by 2020

Homeless Youth and
Young Adult
Initiative
August 2013

COMMITTEE TO
END HOMELESSNESS
KING COUNTY

Supporting the Ten-Year Plan to End Homelessness in King County



homeless
CALIFORNIA

**MORE THAN A ROOF:
HOW CALIFORNIA CAN END YOUTH HOMELESSNESS**

By Shuhua Hyatt January 2013

© Homeless Youth Project and Research Institute. All Rights Reserved.
904 N. Street, Suite 305 • Sacramento, CA 95811 • (916) 485-8722 • info@homelesshy.org



Plan to End
Youth Homelessness
in Calgary

June 2011

Calgary
Homeless
Foundation

Planning Institute

Ottawa – October 30, 2015



Key Constellations of Activity



Community of Practice



Key Constellations of Activity



Effective Program Models

Preventing, Reducing and Ending Youth Homelessness

PREVENTION

EXITING HOMELESSNESS



SCHOOL-BASED
PROGRAMS



FAMILY
RECONNECT



YOUTH
EXITING
CARE



YOUTH
INVOLVED IN
CRIMINAL
JUSTICE



MENTAL
HEALTH &
ADDICTIONS



JOBS &
EDUCATION



HOUSING &
SUPPORTS

Key Constellations of Activity



A National Youth Homelessness Research Agenda

**Co-created between
researchers, practitioners,
policy makers and people
with lived experience**



Key priorities of our Research Agenda



- **Point in Time Count Toolkit**
- **Data Management Support**
- **Program Model Case Studies**
- **National Youth Homelessness Survey**
- **Prevention Framework**
- **Cost Effectiveness Study**
- **Emerging Research Agenda**

A WAY HOME
VERS UN CHEZ-SOI



Leaving home:
A national study
October 19-23, 2015

Key Constellations of Activity



Key Constellations of Activity



Youth Engagement

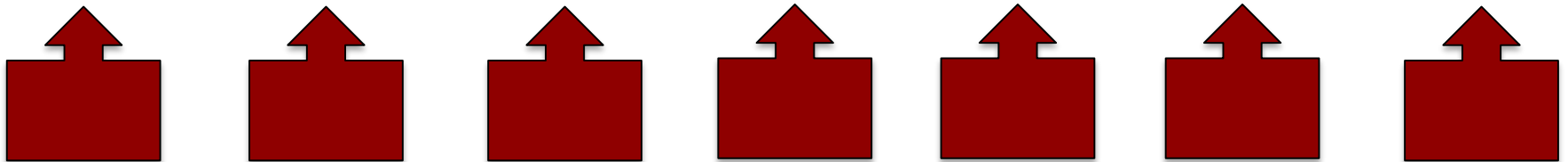
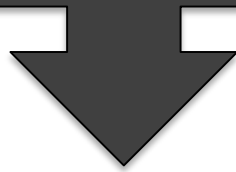


Key Constellations of Activity



Aligning federal, provincial, territorial and local efforts

Ensuring that government policy, programming and funding supports community efforts



Community planning and programs

Questions or Comments?



Questions or Comments?

