



HOME FOR EVERYONE

# THE FUTURE OF SYSTEMS INTEGRATION: AN ECOSYSTEM APPROACH

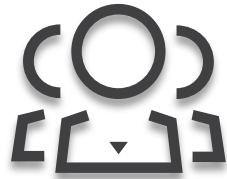
Dr. Alina Turner & Diana Krecsy

# 4 REASONS WHY AN 'ECO-SYSTEM' APPROACH TO HOMELESSNESS IS ESSENTIAL.



1

Significant shifts at macro & micro level are impacting our communities.



2

New knowledge from years of data on Housing First raises different questions.



3

Many 1<sup>st</sup> Gen Plans are sunseting and we still have homelessness.

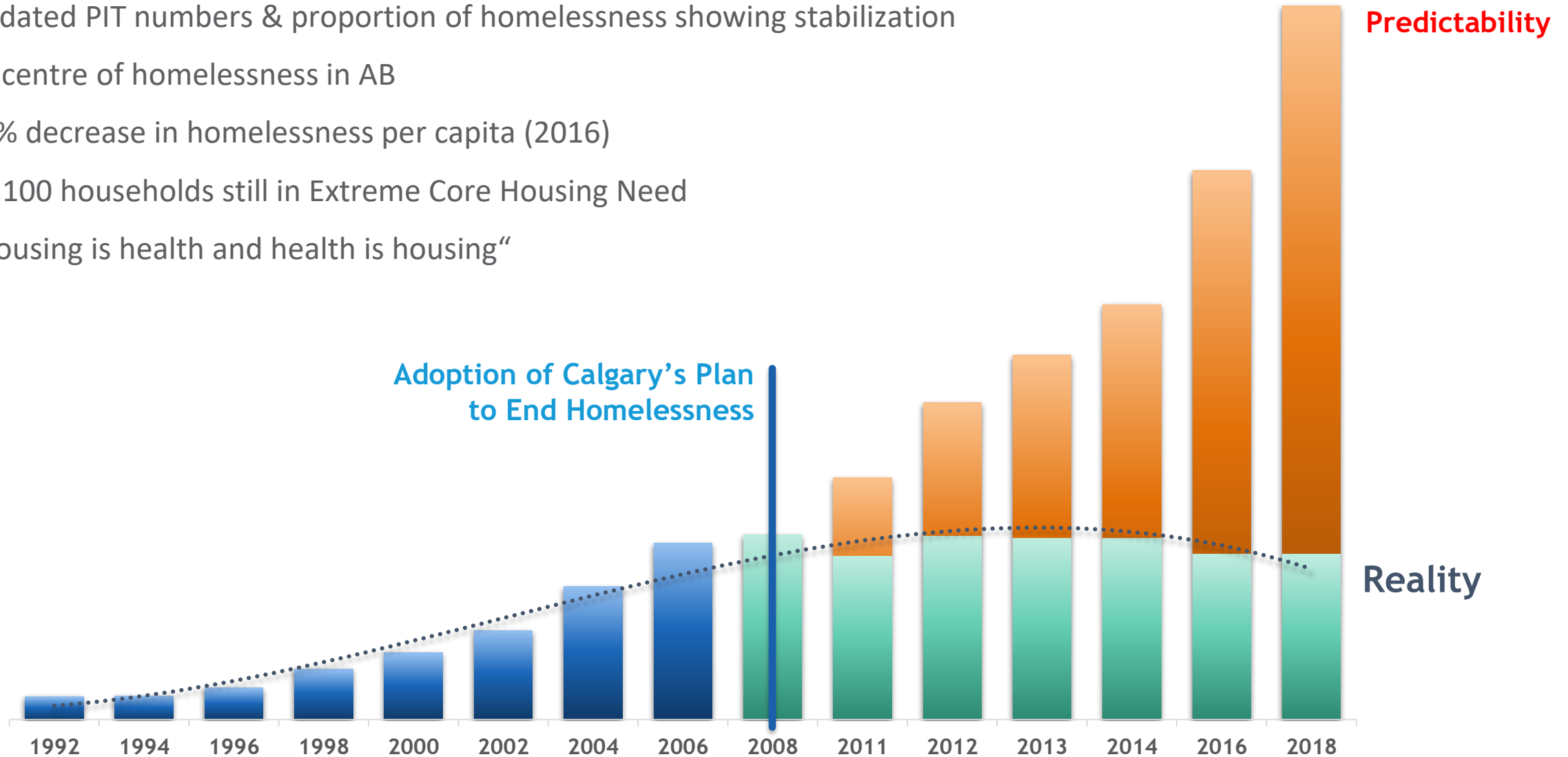


4

We have to look beyond our system for answers & sustainability.

# CALGARY PROGRESS

- Updated PIT numbers & proportion of homelessness showing stabilization
- Epicentre of homelessness in AB
- 26% decrease in homelessness per capita (2016)
- 12,100 households still in Extreme Core Housing Need
- “Housing is health and health is housing”



# A DECADE OF PROGRESS

We've housed 10,000 people and gained tremendous learnings in the process.

Collaboration has increased significantly over the past 10 years to create a Homeless-Serving System of Care in Calgary.

We have significantly increased our capacity to put data and research to use in responding to homelessness.

Committed frontline staff

Housing First programs

Permanent Supportive Housing

Policy/funding advocacy

Common language

Coordinated service approach

Role of System Planner

Collaborative advocacy / fundraising on affordable housing

Homeless Management Information System

Business case

Shelters trends

Macro-economics of homelessness

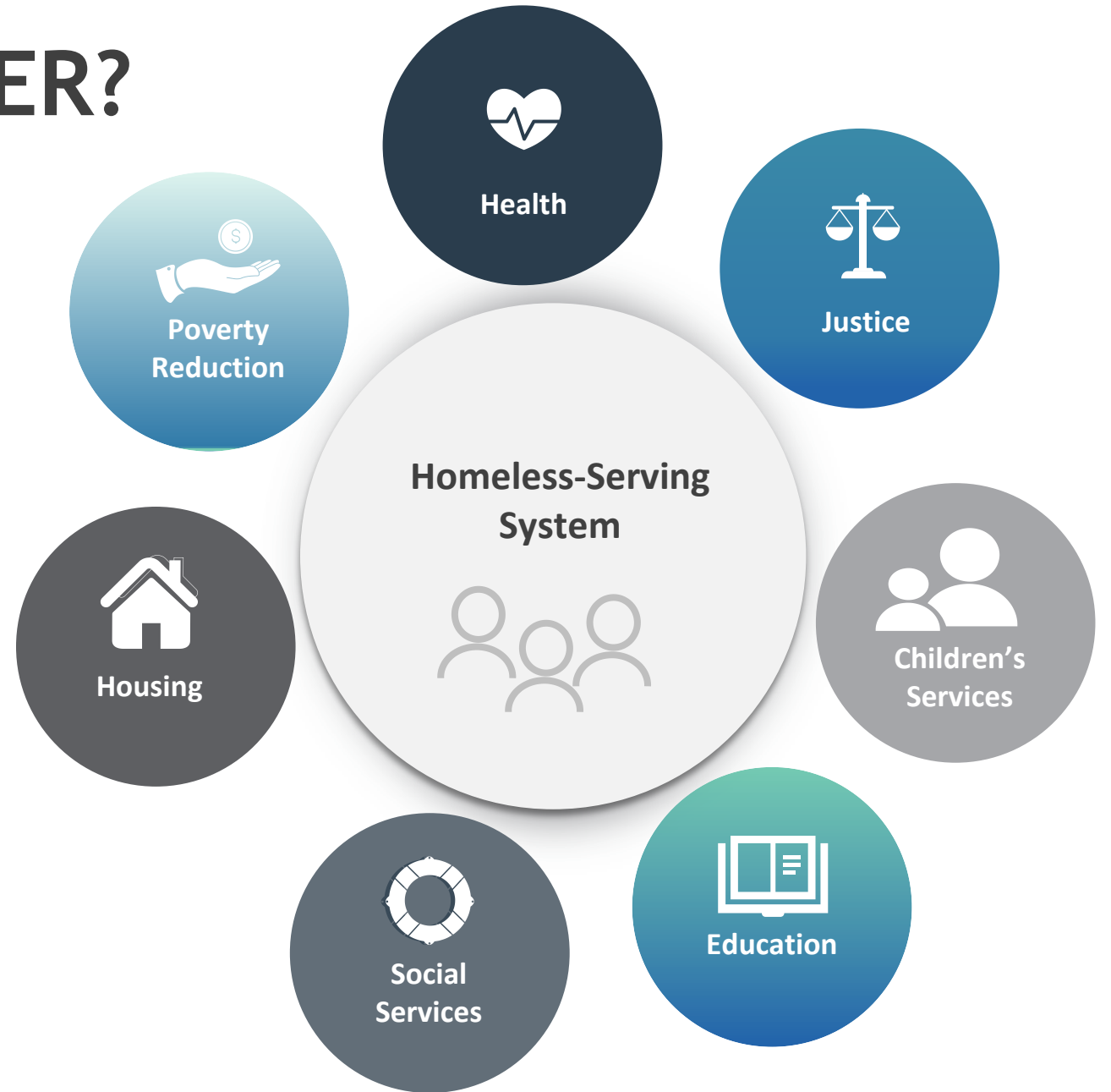
# WHY DOES THIS MATTER?

The homeless-serving system is only a tiny part of the social safety net ecosystem.

How big does the homeless-serving system need to grow ?

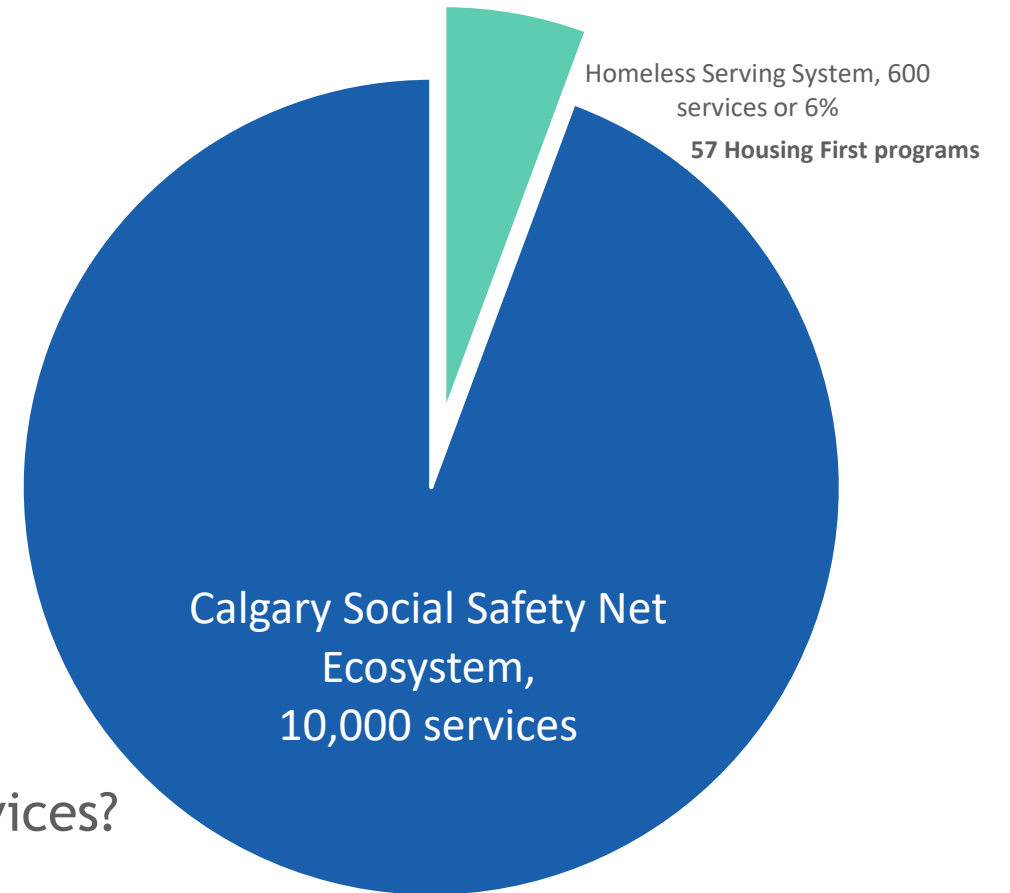
But where does our part in the safety net ecosystem begin and end?

What is everyone else's job?



# HOUSING FIRST IS A MINISCULE PIECE OF THE SOCIAL SAFETY NET PIE.

In **Calgary**, Housing First programs make up **<0.5%** of the services available to those at risk/experiencing homelessness and their **\$1 billion** annual budget.



Who are these players?

How do our clients access these services?

What is their impact ?

What's their role in homelessness?

# WHY THIS MATTERS FOR COORDINATED ACCESS

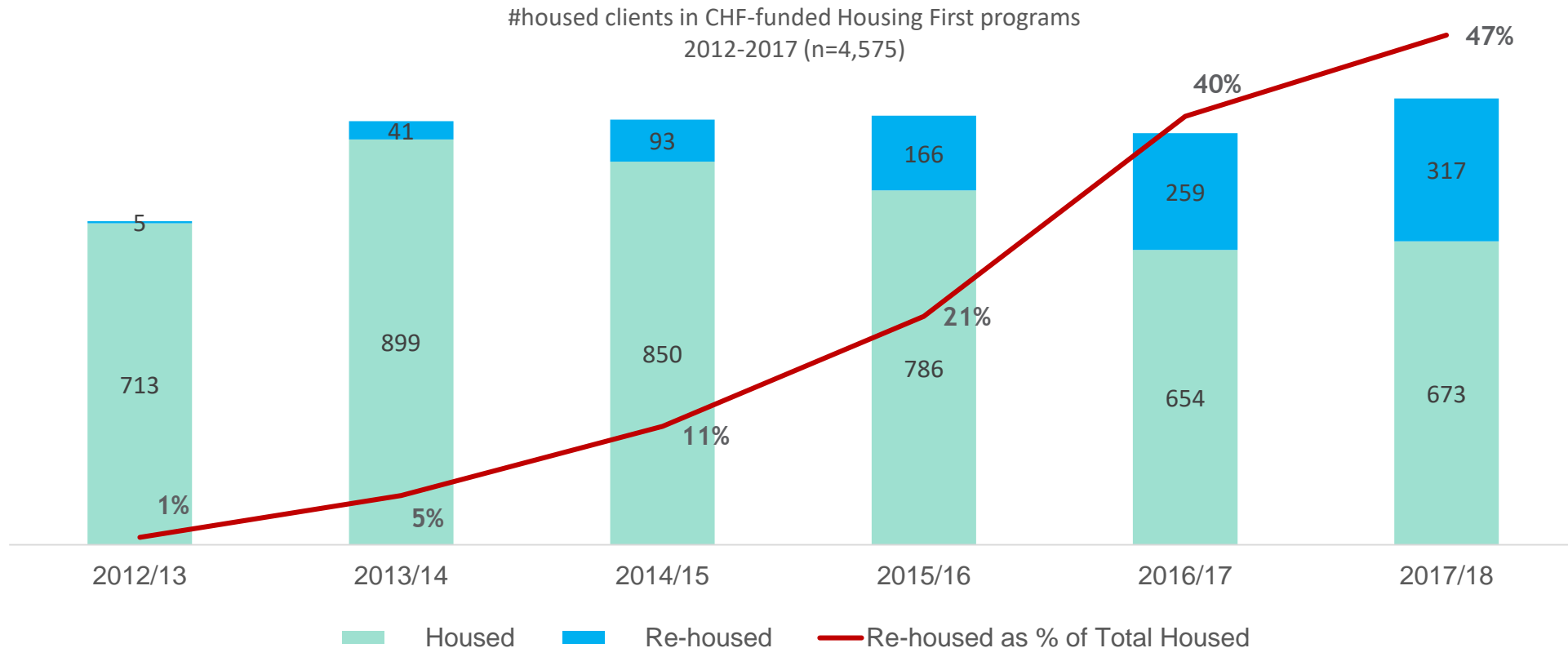
**The By-Names-List  
(BNL) tells you what you  
need.**

**You need to match people  
to resources based on  
needs.**

**Your real-time System  
Map tells you what you  
have available.**

**It also allows you to  
leverage what your entire  
community has, not just  
what you fund/operate.**

# WHERE ARE THE PUBLIC SYSTEM FAILURES? WHY DO HOUSING FIRST GRADUATES COME BACK YEARS LATER? WHAT'S THIS DATA TELLING US?





# CALGARY COMMUNITY SYSTEMS INTEGRATION TABLE



# OUR PROCESS



Strategic Plan/Key document analysis for each system



Systems Design Lab



Mar-April



Systems, Strategy & Coffee



May-June



Sep-Oct



Systems Integration Initiatives Mapping



Nov



Jan



Systems Integration Strategy

# System Mapping Questions



**1.** What is your current strategic direction(s)?



**2.** Where is this direction heading in the future?



**3.** What are the key drivers or pressure points for your strategic direction(s) moving forward?



**4.** If you are a funder, how is your strategic direction impacting your investment strategy?



**5.** What are the key documents we should review to get a sense of your strategic direction for your organization?



**6.** Are there other people who we should connect with to elaborate on particular aspects of your direction?



## Eco-System Pressure Points: Webs of Interconnection

**1.**  
Increasing complexities: mental health, ACEs, FASD, addictions, trauma.

**2.**  
Designer Drug Crisis (fentanyl, meth, opioids) & Cannabis legislation.

**3.**  
Social disorder: violence, public intox/safety perception.

**4.**  
Identity Politics: Reconciliation, newcomers, LGBTQ2S, #metoo

**5.**  
Growth in visibility & costs of the 'underclass'

**6.**  
Aging across groups, inc. vulnerable pop.

**8.**  
Revenue pressures, uncertainty politically.

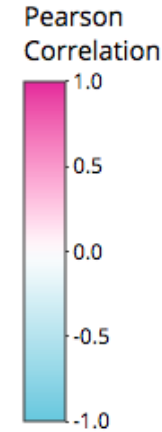
**9.**  
Technology disruption: crime, health, workforce, funding

**10.**  
Heightened performance, accountability, innovation pressure.

# CORRELATION OF VARIOUS INDICATORS TO HOMELESSNESS



Pink (+1): movement variables in the same direction



Blue (-1): variables move in opposite directions - when one grows the other decreases.



White (0): uncorrelated variables.



24 Canadian Cities (all Alberta 7 Cities)

Data from 2011 & 2016

Only possible because of consistent homeless counts

**MORE DATA,  
MORE PROBLEMS:**

**2 KEY DRIVERS OF  
HOMELESSNESS**



## **GDP GROWTH**

Gross domestic product (GDP) is a primary indicator used to gauge health of an economy.

Represents total dollar value of all goods and services produced over a specific time period; referred to as the size of the economy.



## **POPULATION GROWTH**

Increase in the number of individuals in a population usually a result of birth & death rates, net migration.

**NOTE:** Correlation is not Causation!

# PRELIMINARY CALGARY DIRECTIONS



Caring for our people, so we can better care for those we serve.



Integrating the broader ecosystem to move upstream and prevent homelessness in the first place.



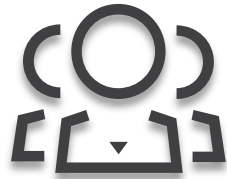
Calling on all leaders to do their part.

# 4 REASONS WHY AN 'ECO-SYSTEM' APPROACH TO HOMELESSNESS IS ESSENTIAL.



1

Significant shifts at macro & micro level are impacting our communities.



2

New knowledge from years of data on Housing First raises different questions.



3

Many 1<sup>st</sup> Gen Plans are sunseting and we still have homelessness.



4

We have to look beyond our system for answers & sustainability.





HOME FOR EVERYONE

**Thank You!**