

MAKING THE SHIFT
YOUTH HOMELESSNESS
SOCIAL INNOVATION LAB

Bridging Research and Practice:
A case study of two HF4Y demonstrations from
Ottawa and Toronto

November 6, 2018



canadian
observatory on
homelessness



A WAY HOME
VERS UN CHEZ-SOI
CANADA

Making the Shift

A Collaborative Partnership

A Way Home Canada

- brings a network of individuals, organizations and youth with lived experience together, supporting training, technical assistance, and shared learning through communities of practice.



The Canadian Observatory on Homelessness

- brings expertise in research, evaluation, and knowledge dissemination.

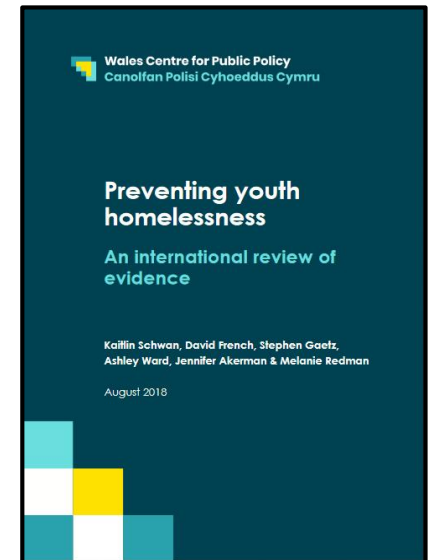
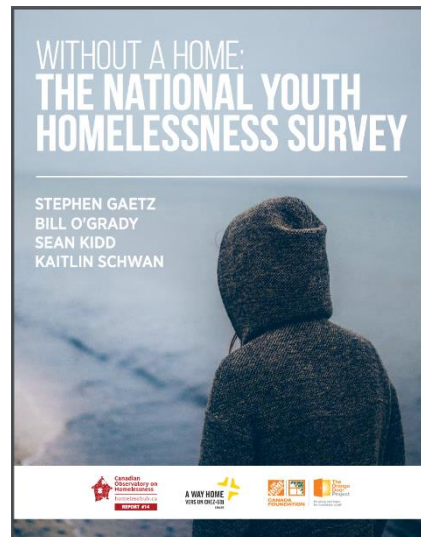
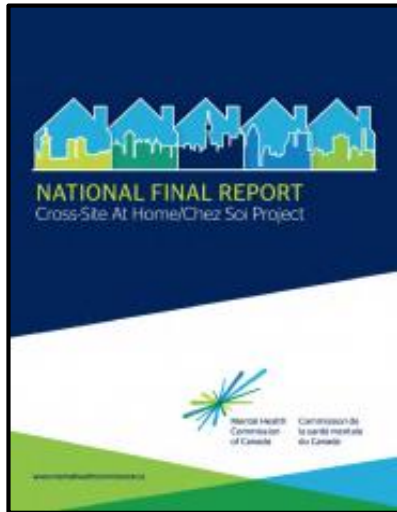


MaRS Centre for Impact Investing

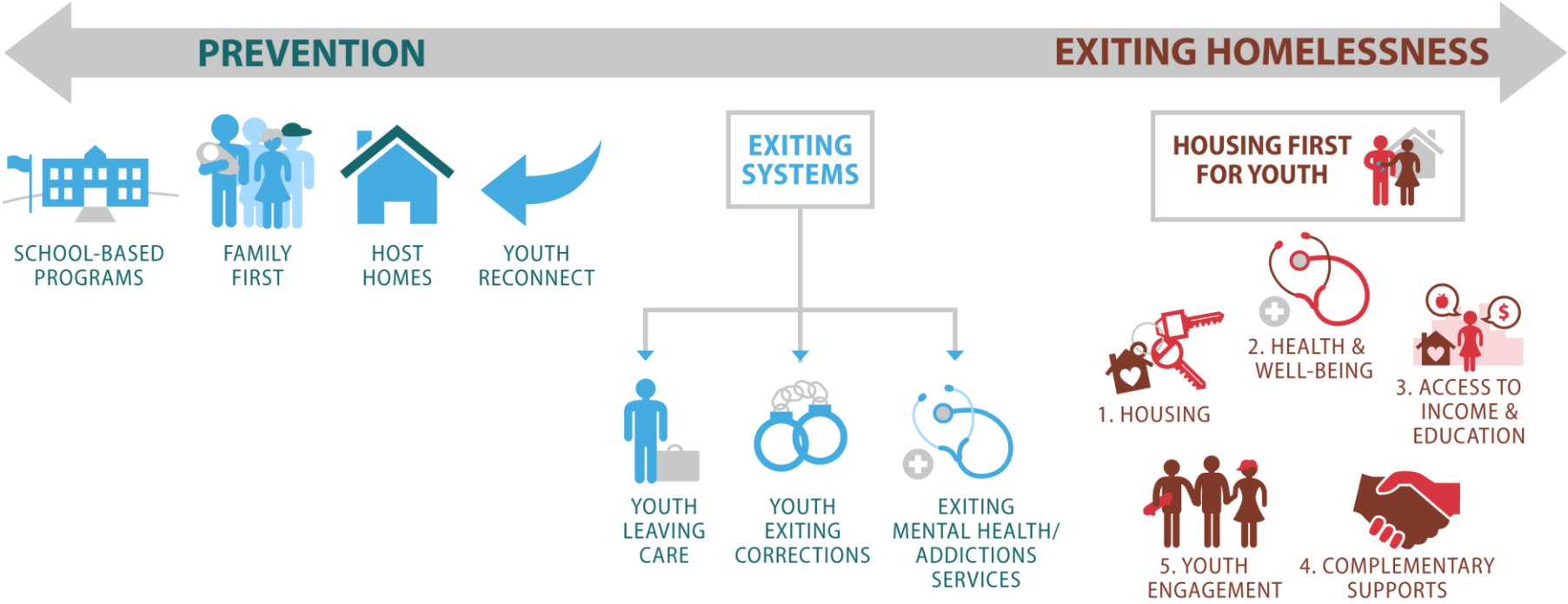
- is supporting the project through an in-depth examination of funding for our response to youth homelessness in Canada, investigating how emerging promising practices could be funded and sustained moving forward.



Why Making the Shift?



Building the Evidence Base

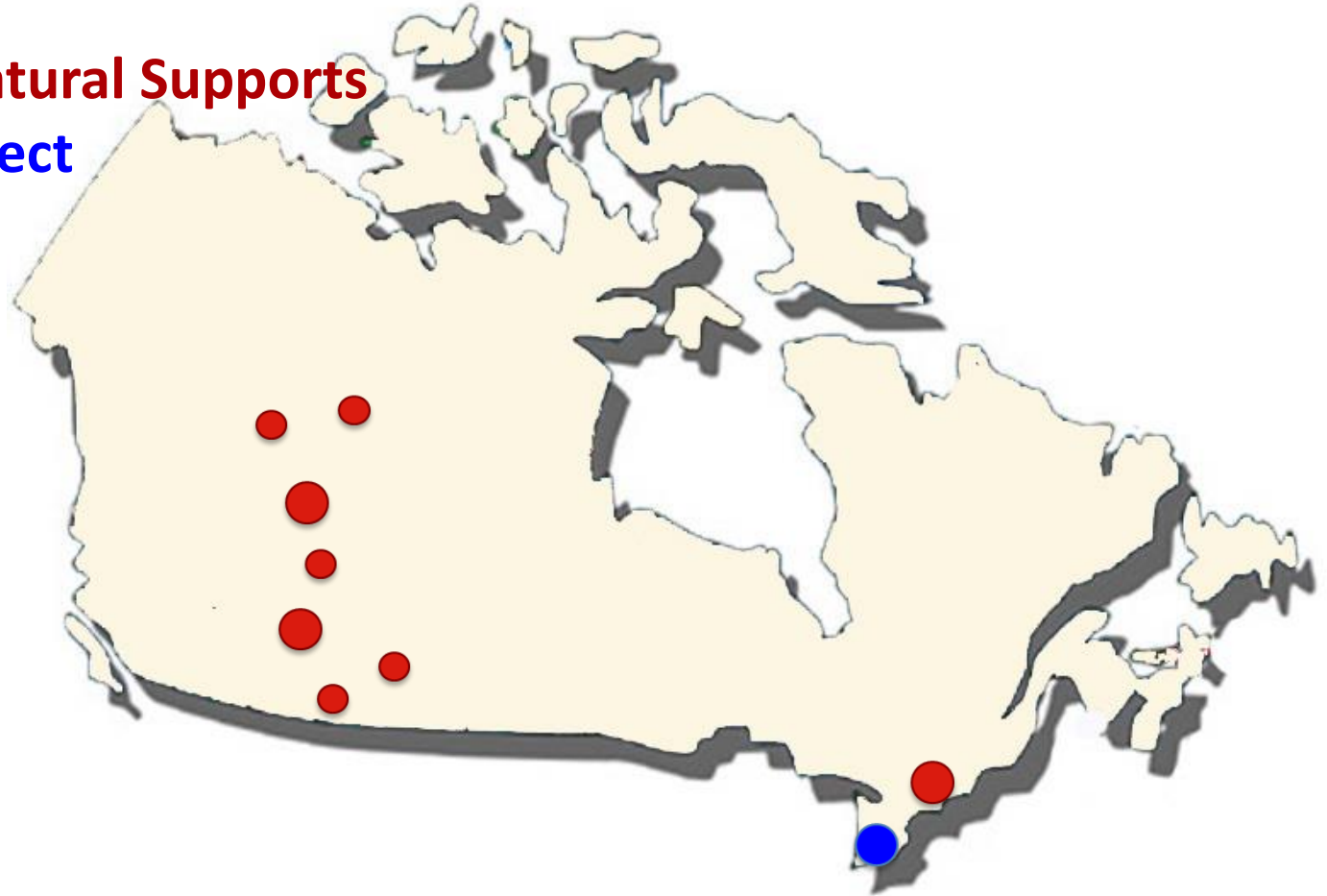


Making the Shift

Prevention Demonstration Projects

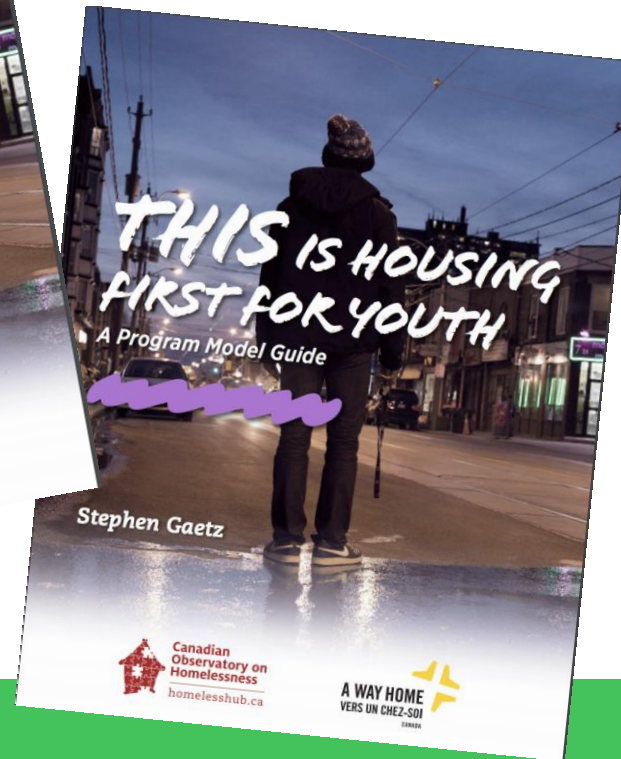


- **Family and Natural Supports**
- **Youth Reconnect**



Making the Shift

HF4Y Demonstration Project



Making the Shift

HF4Y Demonstration Project

Ottawa

- delivered (via third party agreement) with Youth Services Bureau, with CMHA Ottawa and John Howard Ottawa



Ottawa

John Howard Society of Ottawa

Toronto

- ... with WoodGreen Community Services



Hamilton

- ... with Hamilton Regional Indian Centre



THE CORE PRINCIPLES OF HOUSING FIRST FOR YOUTH



1. A right to housing with no preconditions
2. Youth choice, youth voice and self-determination
3. Positive youth development and wellness orientation
4. Individualized, client-driven supports with no time limits
5. Social inclusion and community integration



Making the Shift

HF4Y Demonstration Project

Endaayaang



Housing First For Youth

Hamilton: Endaayaang

- Indigenous-identifying youth, aged 16-24
- Exiting systems (care, justice, hospital, etc.)
- Infusing the program model with culture
- Drawing from the Circle of Courage, and Seven Grandfather Teachings

Making the Shift

Indigenous Advisory Circle

- Includes Elders, MtS project partners, Indigenous service providers, and young people

The Waakebiness-Bryce Institute for Indigenous Health offering:

- student and professional research (and coordination) support
- research evaluation and data dissemination
- use of office space in a fully Indigenized workplace



UNIVERSITY OF TORONTO
DALLA LANA SCHOOL OF PUBLIC HEALTH
Waakebiness-Bryce Institute for Indigenous Health



Making the Shift

HF4Y Demonstration Project

Ottawa: Making the Shift



Making the Shift

Ottawa HF4Y Demonstration Site

Youth Services Bureau of Ottawa

- Program administration
- Case management services

CMHA Ottawa

- Case management services
- 1 LBGTQ2S+ focused case load

John Howard Society of Ottawa

- Case management services

Making the Shift

Ottawa HF4Y Demonstration Site

- 2015: Ottawa's adult homeless service delivery system adopted a housing first philosophy including coordinated access.
- The youth sector followed shortly after and established the following:
 - Adopted the SPDAT as the common practice for assessment and referral.
 - Created the Prioritization and Matching table (P&M). Meeting monthly, this group of agencies participate in coordinated access.
 - Youth are prioritized based on SPDAT score, age, identify LGBTQ2S+, Indigenous or Inuit, justice involved, and young parents

Making the Shift

Ottawa HF4Y Demonstration Site

- With their P&M group focusing in on several key vulnerability indicators, these youth were the priority for the group.
- This led to a group of youth continuously being bumped – which through our profile, we were able to serve

Making the Shift

Ottawa HF4Y Demonstration Site

The program administrator:

- Plays a central role in administration of funding and general program coordination.
- Provides some direction and support to agencies while in a place to advise, support and monitor, is not in a supervisory role over any staff.
- Agencies are responsible for hiring, training and supervising their own case managers

Making the Shift

Ottawa HF4Y Demonstration Site

- Case managers are responsible for:
 - Promoting the MTS HF4Y program in the community
 - Connecting with clients referred to the program and arranging for a screening and intake with a research assistant
 - Once clients are in the program they will be working towards finding housing with clients, teaching life skills and their rights and responsibilities as a tenant.
 - Working towards goals identified by the client and providing guidance to reorient the goals if they are no longer appropriate.

Making the Shift

Ottawa HF4Y Demonstration Site

Youth Peer Support Workers

- Lived experience
- Trained through local organization to build capacity to work individually and purposely with youth

Making the Shift

Ottawa HF4Y Demonstration Site

Participants

- 80 young people aged 18-24 years
- Moderate acuity (per SPDAT)
- Newly homeless or unstably housed (e.g., transitional/supportive living)
- In need of support to locate or maintain housing in Ottawa area
- Recruited through referrals from youth-serving agencies across Ottawa

Making the Shift

Ottawa HF4Y Demonstration Site

Caseload Capacity	85%
Housed	74%
Employed	39%
In school	41%

Making the Shift

Toronto HF4Y Demonstration Site

Free 2 Be

YOUNG PEOPLE NEEDED!
Are you transitioning out of care of the child welfare system?

We are looking for young people to participate in a research study to test a new program model that will support your transition out of care towards adulthood & self-sufficiency.

If you are eligible and agree to participate in the research study, you may receive:

- ◆ A rent subsidy to go towards a housing option of your choice.
- ◆ Connection to a Housing First for Youth Case Counsellor.
- ◆ Youth-centred programming & services.
- ◆ Consistent & holistic support creating & meeting your personal goals.

All participants will receive compensation for your time!

To be eligible to participate in the research study you must:

- ✓ Be between the ages of 17-24.
- ✓ Be between or former care leaver.
- ✓ Currently receiving support from a Youth in Transition (YIT) Worker or a local service provider.

If interested, please speak to your Youth in Transition Worker and ask about WoodGreen's Free 2 Be (Housing First for Youth Leaving Care) Program & the Making the Shift study.
Or email us at free2beinfo@woodgreen.org

WOODGREEN
Opportunity made here.

United Way
Member Agency

www.woodgreen.org



Making the Shift

Toronto HF4Y Demonstration Site

Participants

- 80 young people aged 17-21 years at intake
- Crown ward (or similar status) transitioning/who have transitioned out of care
- Homeless or marginally housed and requires support securing or maintaining housing
- In need of support to locate or maintain housing in
- Recruitment pathway through child and youth protections as well as community, youth-facing agencies

Making the Shift

HF4Y Research and Evaluation Design

- Formative Evaluation
- HF4Y Fidelity Assessment
- Mixed-methods community-based Randomized Controlled Trial

Making the Shift

Measuring Outcomes



1. HOUSING SUPPORTS



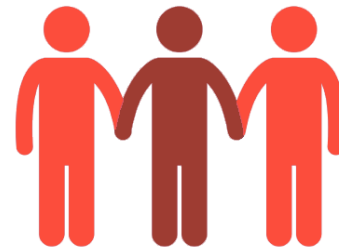
2. HEALTH & WELL-BEING



3. ACCESS TO INCOME & EDUCATION



4. COMPLEMENTARY SUPPORTS



5. SOCIAL INCLUSION

Making the Shift

Mixed-methods RCT

Methods

Measures

- Interview-based
 - Demographics
 - Physical health and access to healthcare
 - Housing history
 - Education, work, and income
 - Interviewer impressions of participant

Making the Shift

Mixed-methods RCT

Methods

Measures

- Survey-based
 - Food security
 - Drug use patterns
 - Mental health symptomatology
 - Life skills
 - Quality of life
 - Resilience
 - Self-efficacy
 - Hope
 - Social support and community integration

Making the Shift

Mixed-methods RCT

Methods

Measures

- Qualitative interview
 - Pathways into precarious housing or homelessness
 - Life before PHH
 - How person first became PHH
 - Current life
 - Typical day
 - Coping skills, resiliency
 - Relationships
 - Meaningful activities
 - Supports
 - Vision for the future



MAKING THE SHIFT

CAEH Panel Discussion

UPCOMING RELEASE!

A ROADMAP FOR THE PREVENTION OF YOUTH HOMELESSNESS

DR. STEPHEN GAETZ, DR. KAITLIN SCHWAN,
MELANIE REDMAN, DAVID FRENCH AND DR. ERIN DEJ

November 20th, 2018
12:00PM-1:30PM

WEBINAR

