

# **School-Based and Early Interventions**

**David MacKenzie**

**AWH4. 1.30-3.00pm. 6 Nov 2018.**

**Canadian Alliance to End Homelessness Conference**

# The Geelong Project

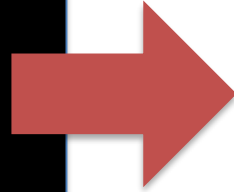
A 'community of schools & services' [COSS] model

'Collective Impact' – A new paradigm

# THINKING ABOUT DISADVANTAGE?



- family dysfunction
- family conflict
- community poverty
- mental health issues



**Youth homelessness: 230  
adolescents/year – 2002-2013**

**Early school leaving: about 200  
-250 youth/year – Geelong**

**Adolescent petty crime: 212  
assaults; 129 property; 334 theft;  
39 disorderly conduct (2016)**

**Illicit substance use down: Est.  
1000 have smoked marijuana; 84  
tried ICE; 120 tried ecstasy**

# The need for system reform

Geelong (circa 2012-13)

- 913 young people entered the Homelessness System in Geelong - ↑4% per annum;
- 88% (806) young people entering homelessness not engaged in Education, Training and Employment;
- 2% of young people accessing short-term crisis accommodation returned home following support;
- Low educational outcomes;
- Youth unemployment in Geelong more than 30%.





FDJ  
9101  
551  
PSE  
555

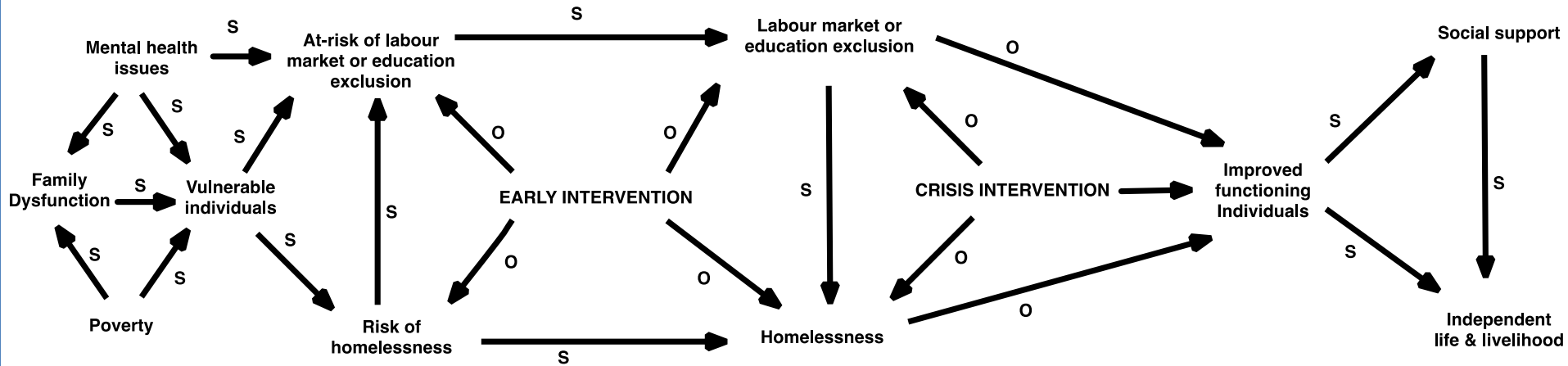


# Statistics ... Statistics ... Statistics



**Nothing seemed to be changing?**

# Conceptualising Systems: a causal loop diagram



O - opposite i.e. if early intervention goes up then the risk of labour market and education exclusion goes down

S - same i.e. if risk of homelessness goes up then homelessness goes up

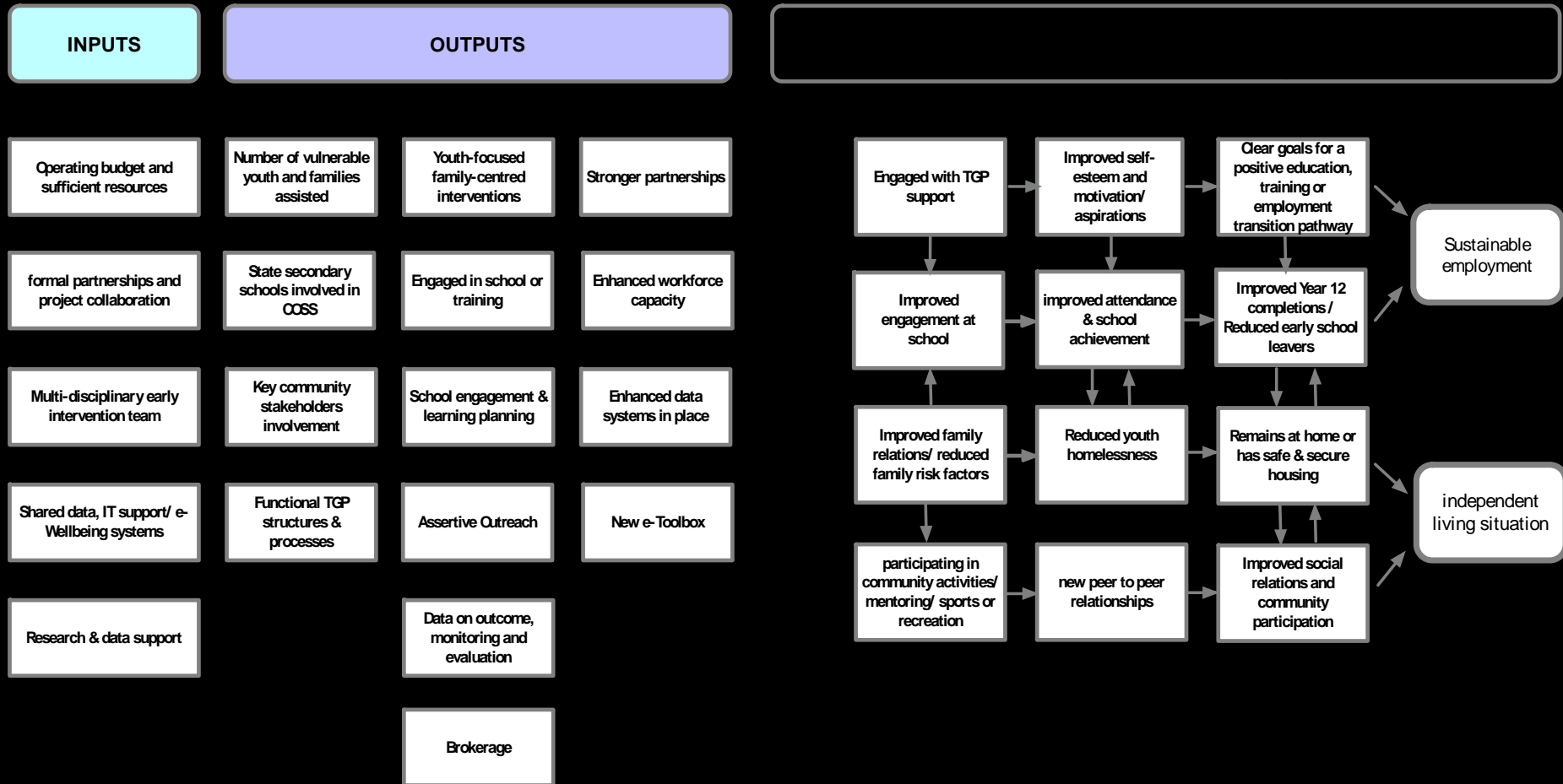
# The Geelong Project

The 'community of schools  
and services' model of  
early intervention

[COSS MODEL]



# The Geelong Project Program Logic



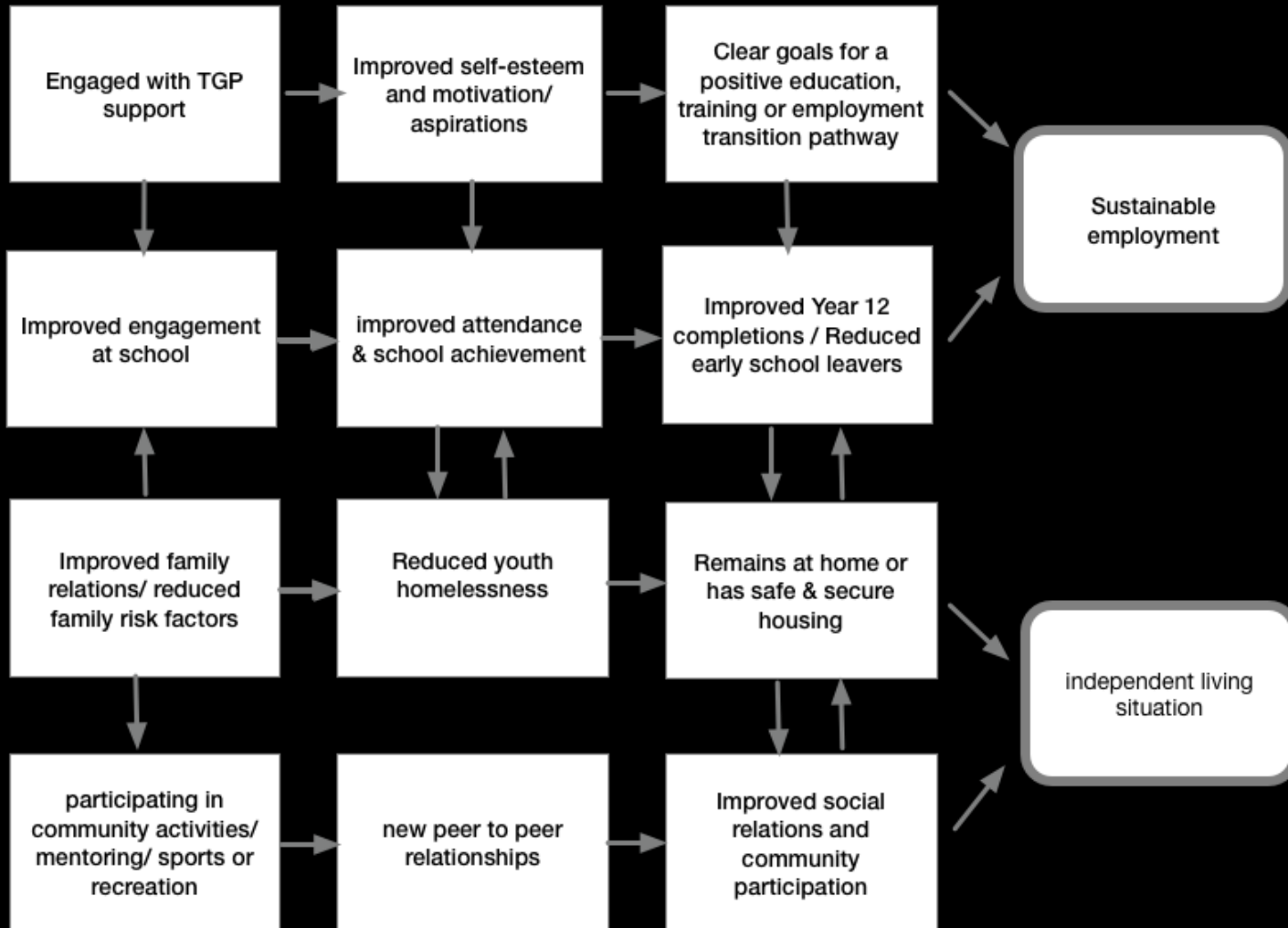
## OUTCOMES FOR YOUNG PEOPLE - IMPACTS

Short-term

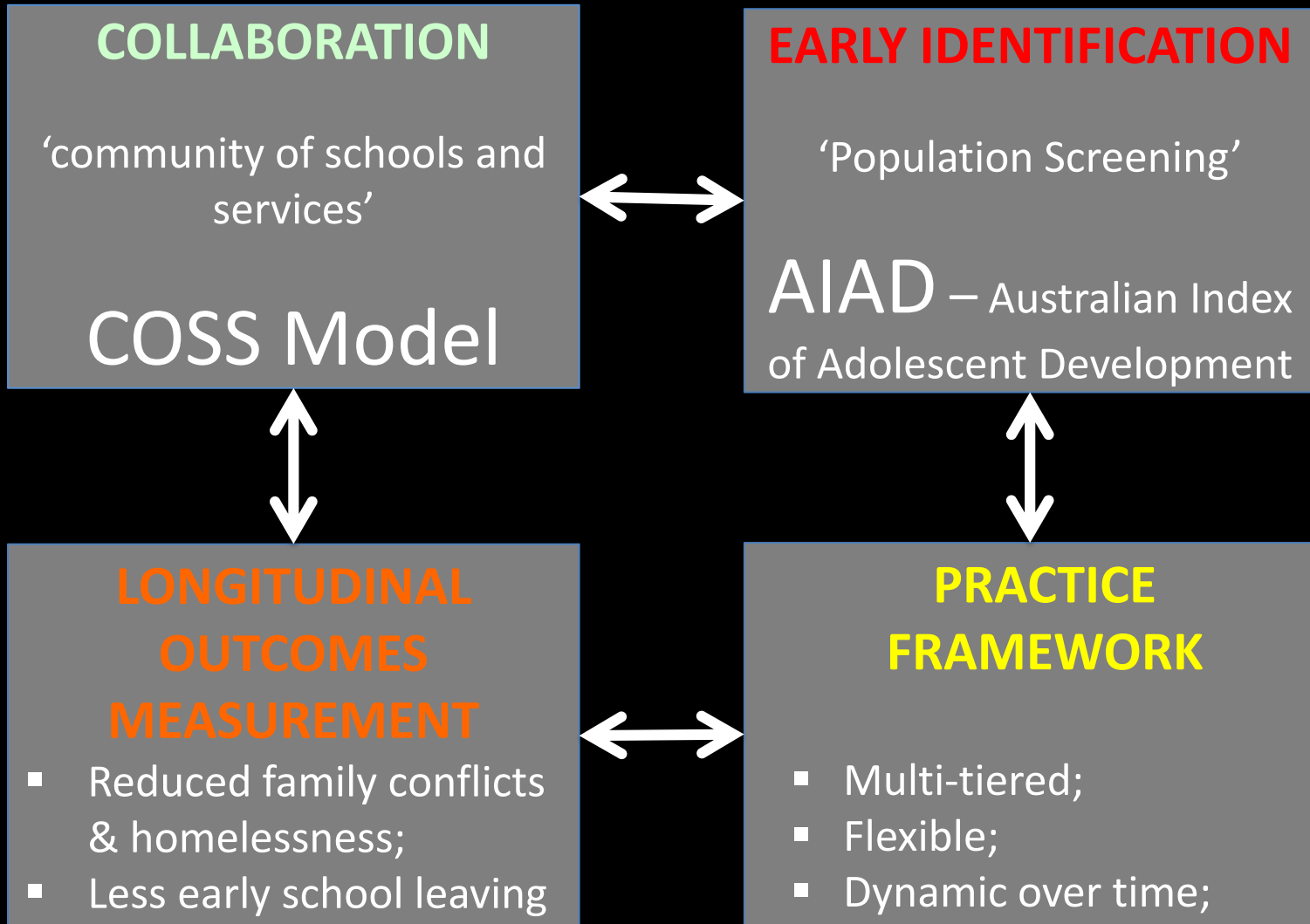
medium-term

Long-term

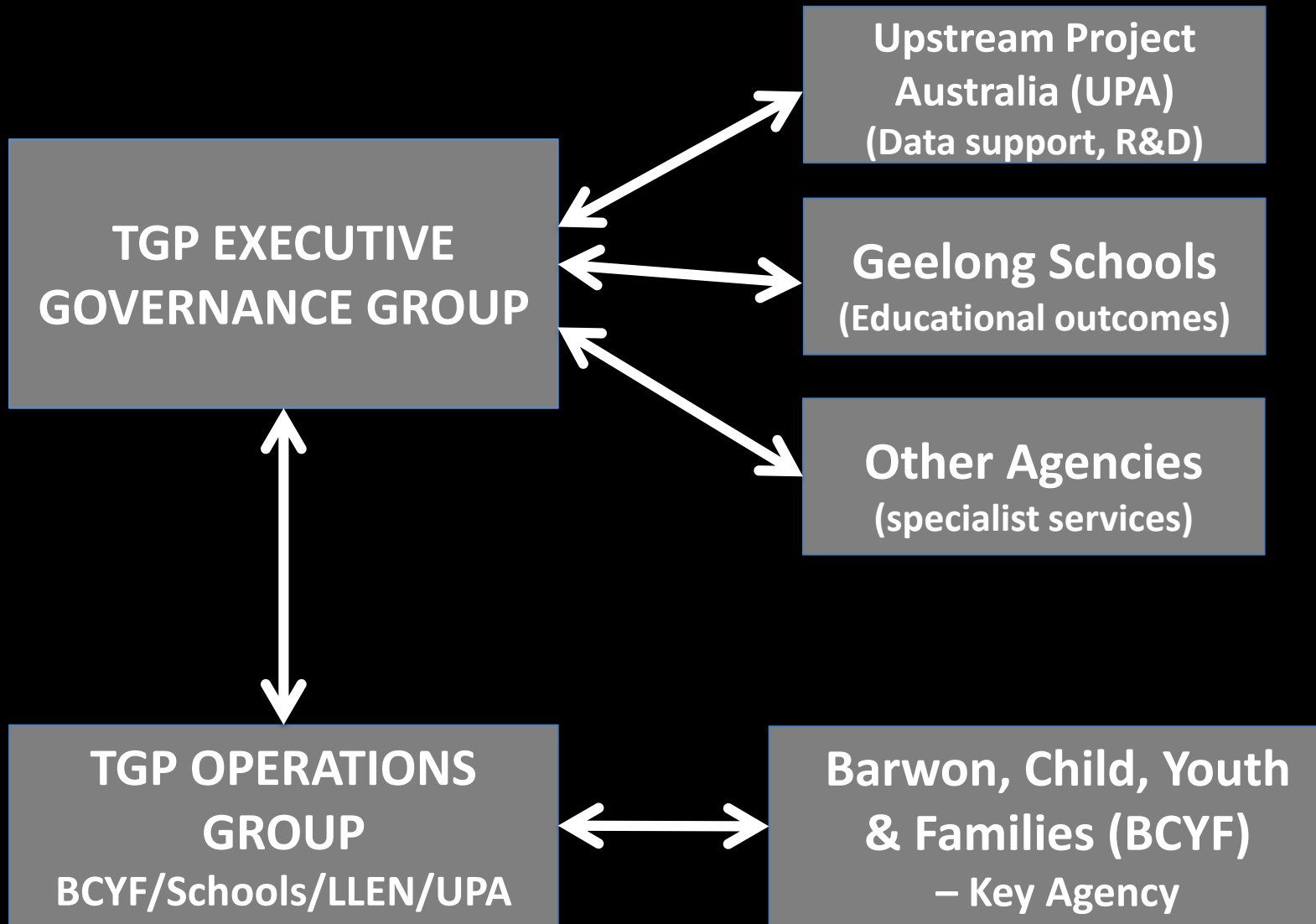
Impacts



# Foundations of TGP/ COSS Model



# Foundations of TGP/ COSS Model

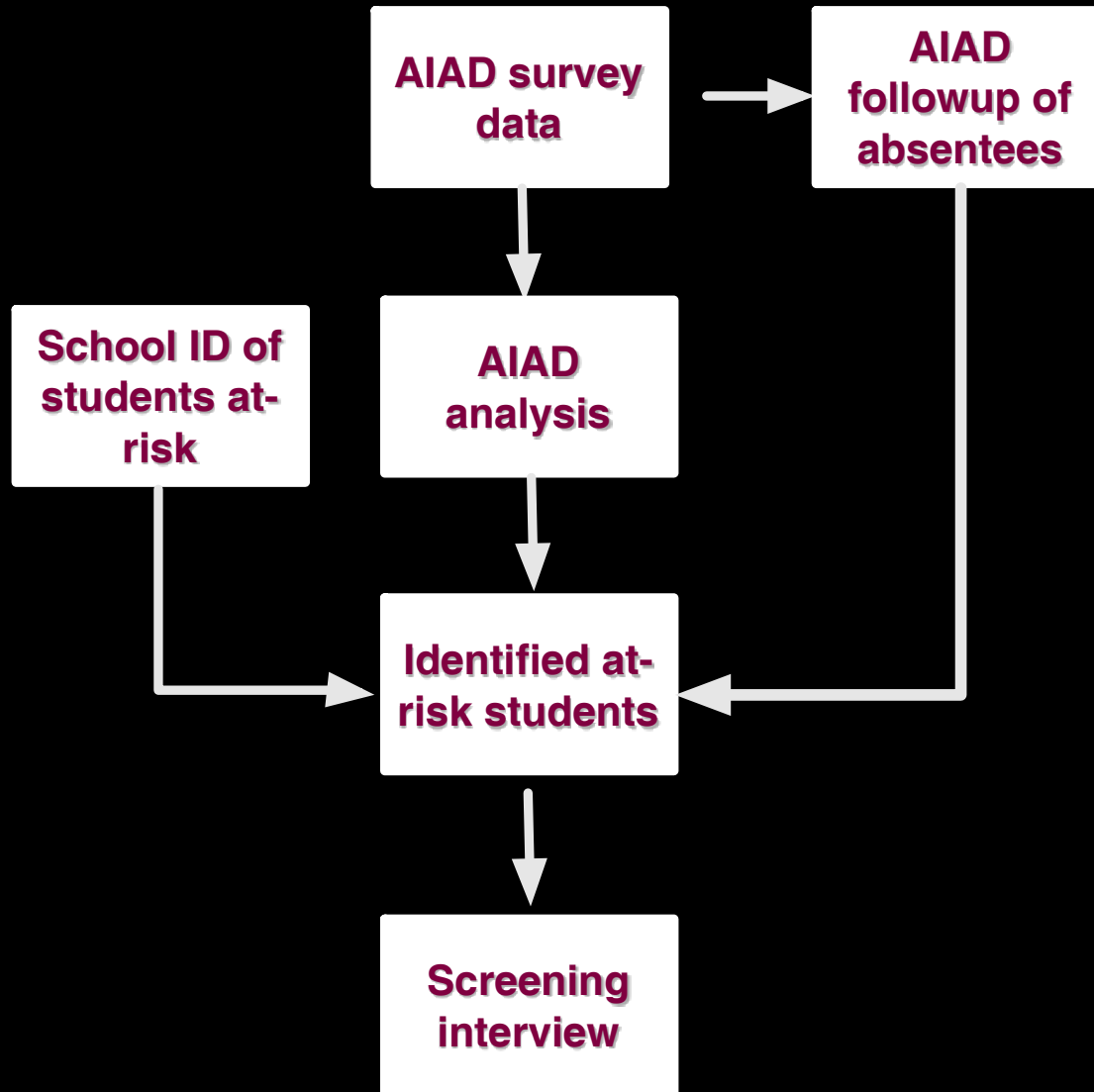






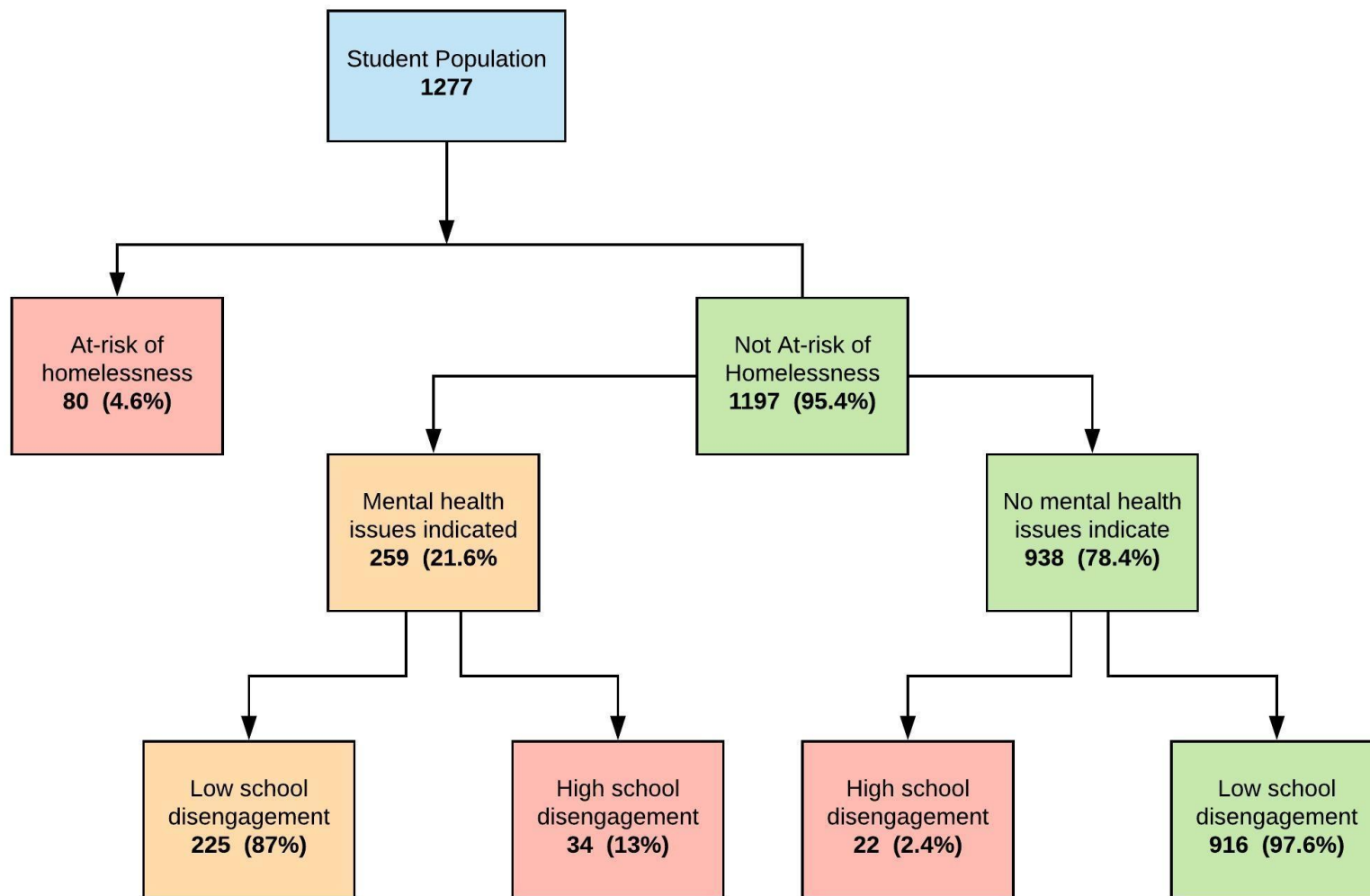
# EARLY IDENTIFICATION 'population screening'

The image shows a portion of the AIAD survey form. It includes sections for 'COMPLETION INSTRUCTIONS', 'Name', 'Date of Birth', 'Year', 'Class', 'Name of School', and various questions about the student's background, family, and school experience. The form is titled 'AIAD AUSTRALIAN INDEX OF ADOLESCENT DEVELOPMENT'.



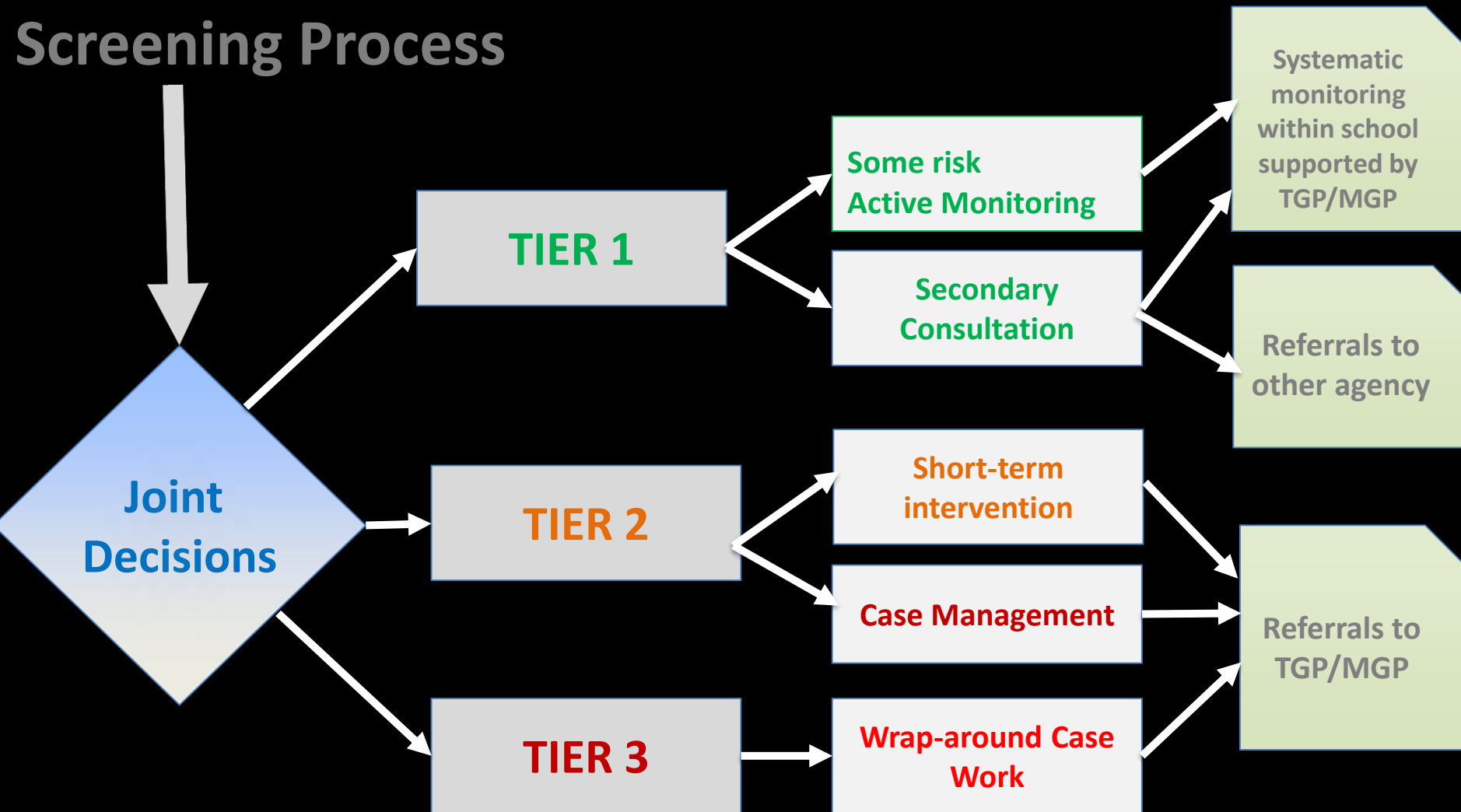
# At-risk population breakdown – 3 pilot schools

## Population Profile - three pilot schools in Geelong, AIAD 2017



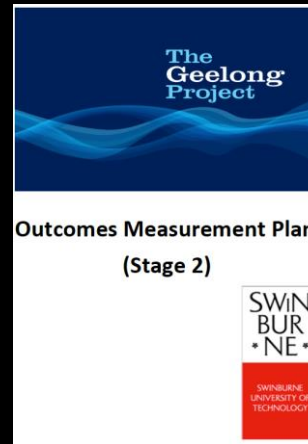
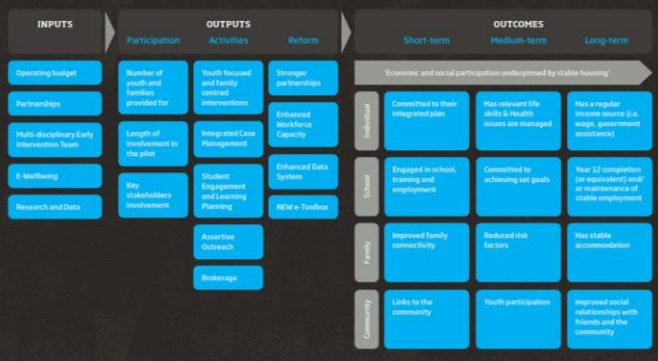
# From EARLY ID to Youth-Focused & Family-Centred INTERVENTIONS

## Screening Process



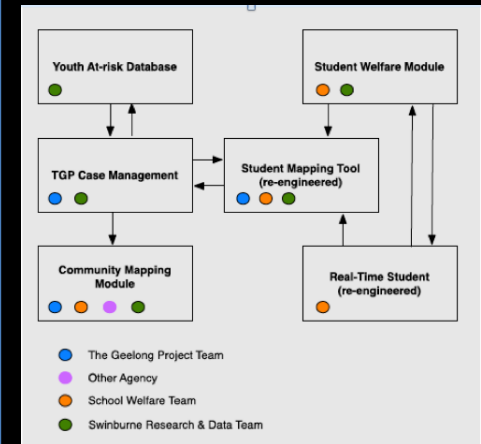
# LONGITUDINAL OUTCOMES MEASUREMENT

The Geelong Project: Early Intervention Pilot Program Logic



A screenshot of the AIAD (Australian Index of Adolescent Development) form. It includes sections for:
 

- Completion of the form (instructions).
- Completion instructions (instructions for parents).
- Demographic information (Name, Date of Birth, Year, Class, School).
- Gender (Male/Female).
- Age (12-19).
- Cultural Background (English speaking/non-English speaking).
- Family structure (Single parent, Two parents, etc.).
- Living situation (Mark one only).
- Parental involvement (Mark one only).
- Parental mental health (Mark one only).
- Parental substance use (Mark one only).
- Parental employment (Mark one only).
- Parental education (Mark one only).
- Parental employment (Mark one only).
- Parental education (Mark one only).

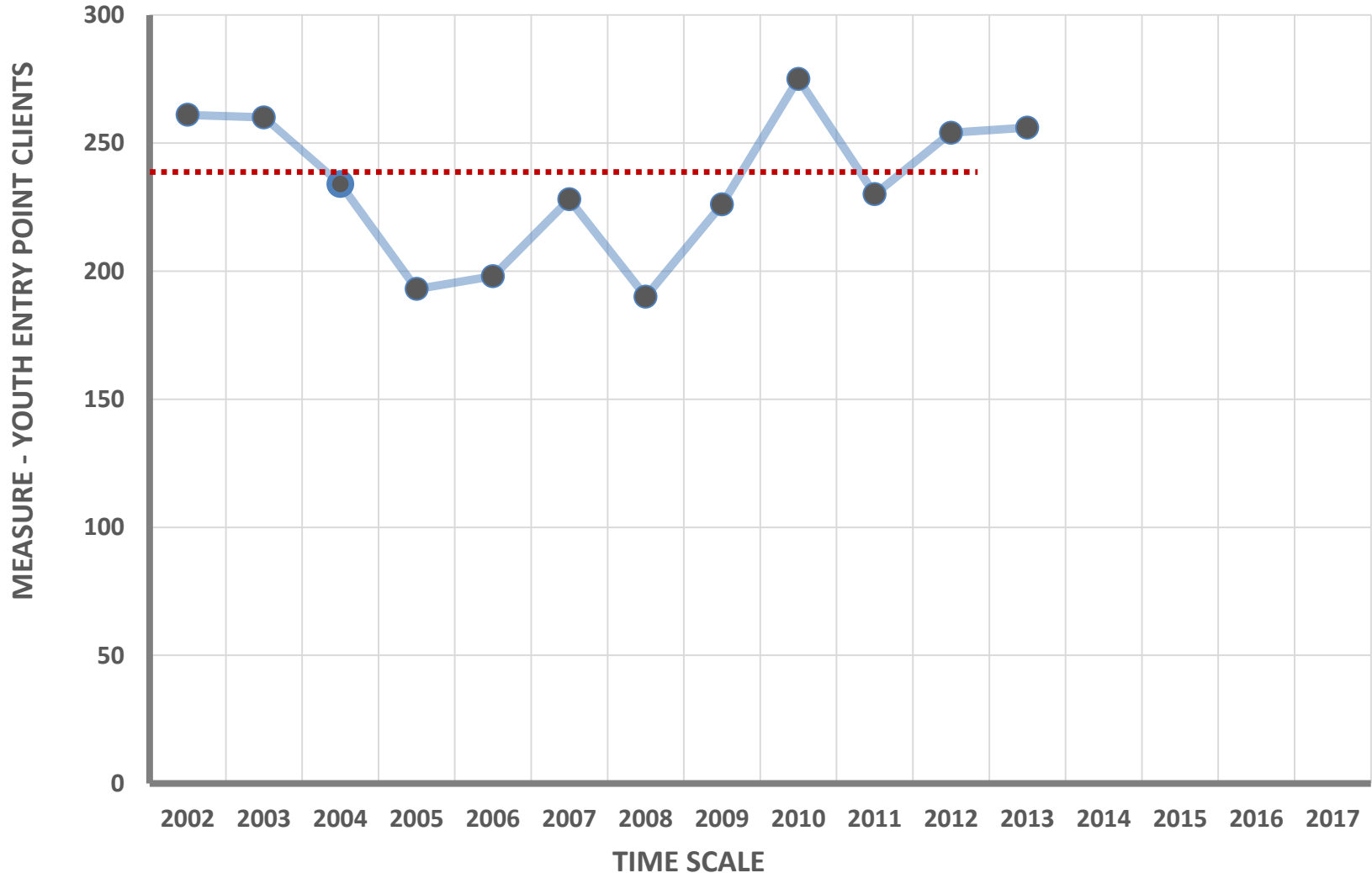


- Innovation;
- Iterative & agile;
- Practical & constructive;
- Creative problem-solving;
- Developmental evaluation.

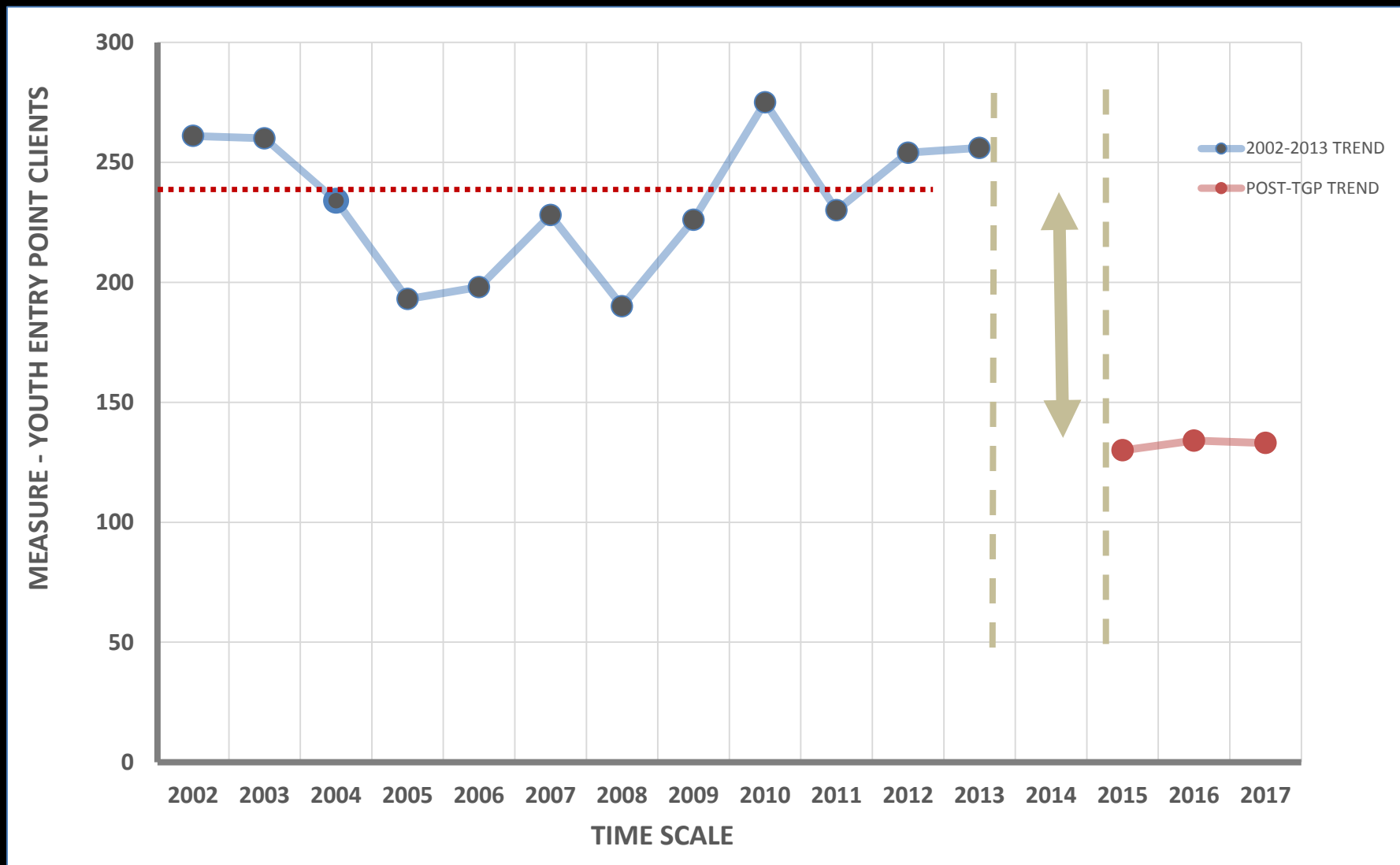
**What results?**



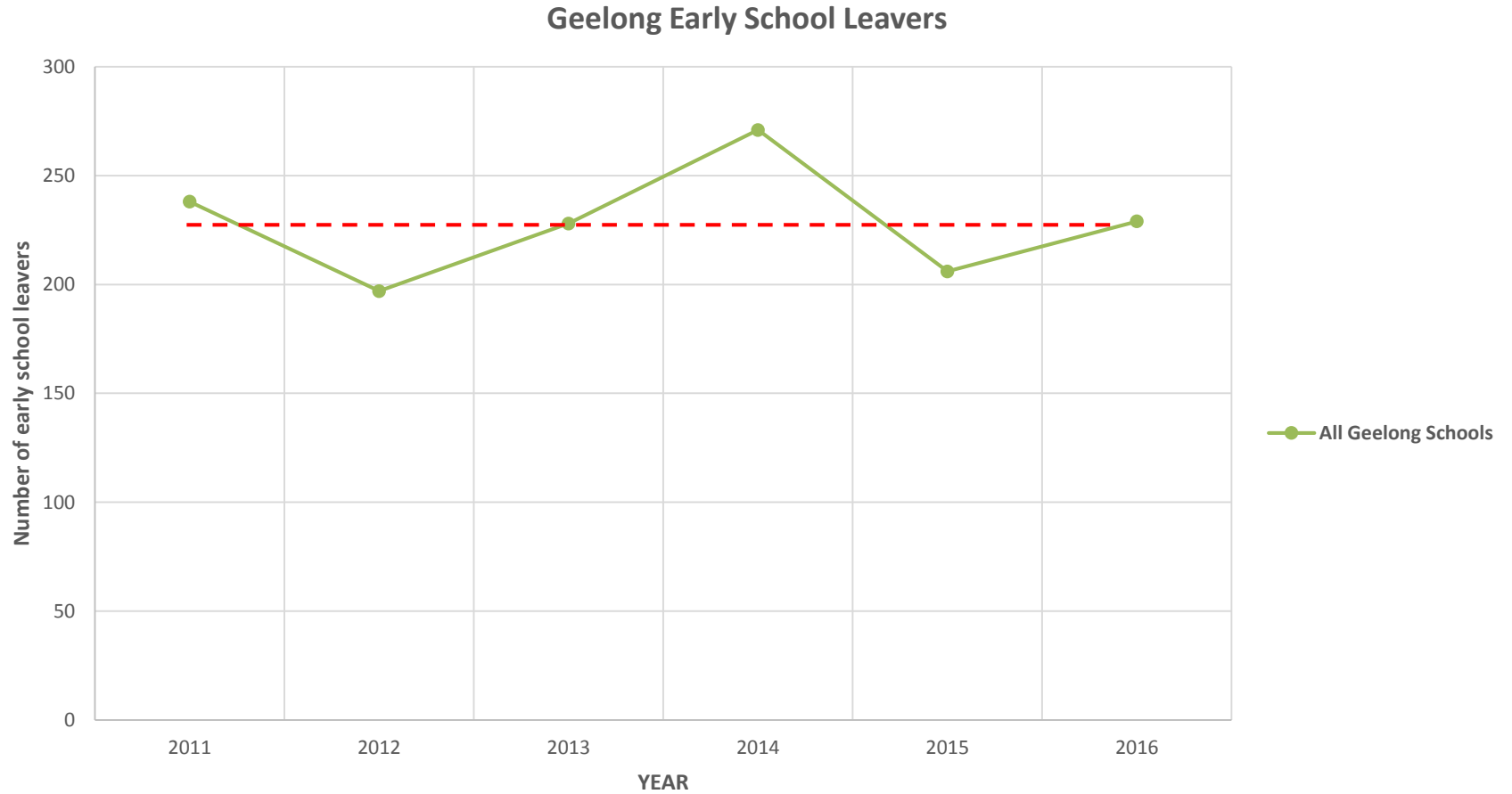
# The number of homeless adolescents [Geelong 2002 – 2017]



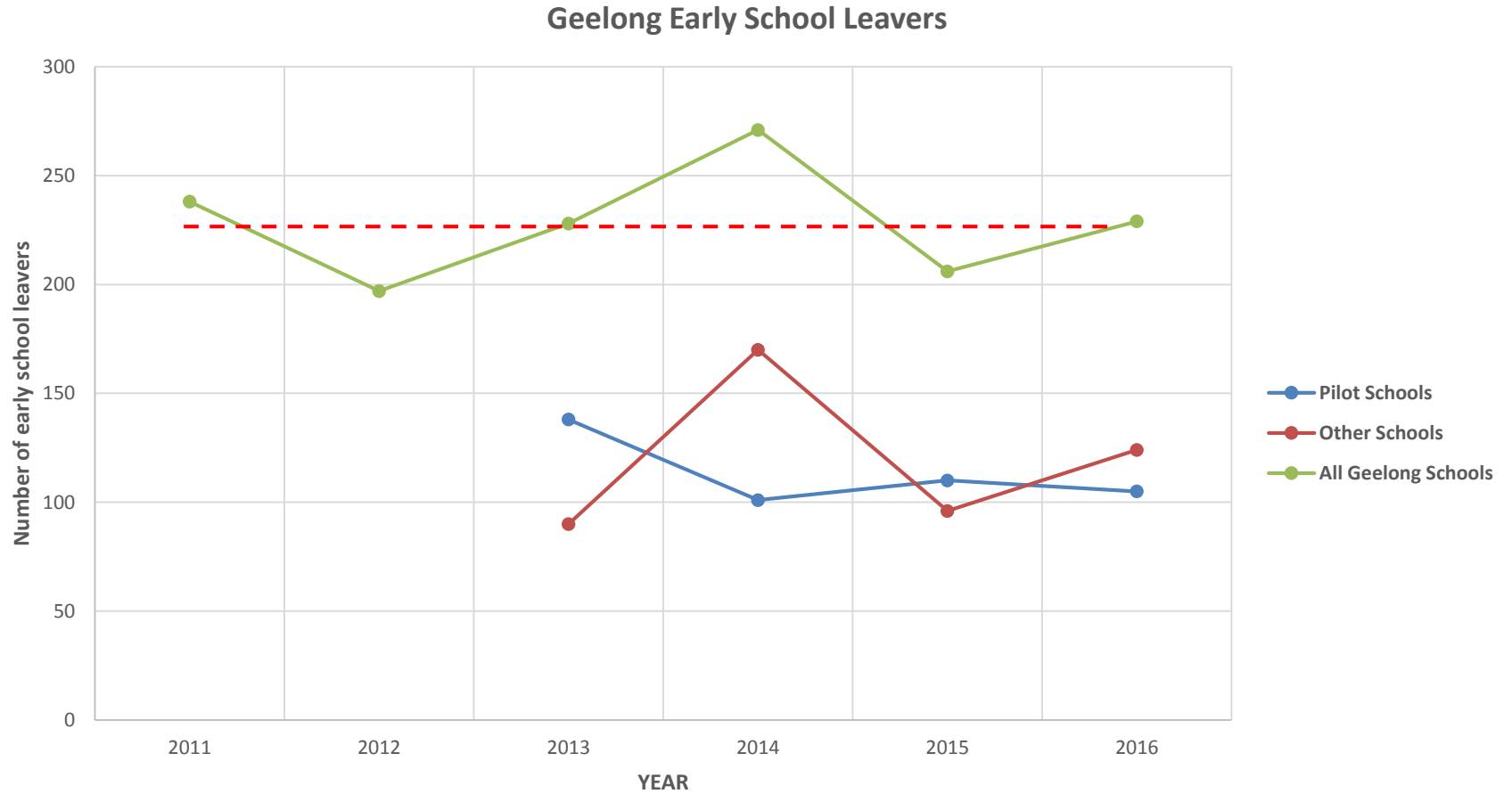
# The number of homeless adolescents [Geelong 2002 – 2017]



# Geelong early school leavers

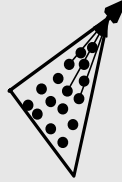


# Geelong early school leavers



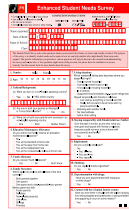
# 'Collective Impact'

## Common Agenda



All participants have a shared vision for change including a common understanding of the problem and a joint approach to its solution through agreed upon actions.

## Shared Measurement



Data collection and measurement of outcomes consistently across all participants to ensure efforts remain aligned and participants hold each other accountable.

## Mutually Reinforcing Activities



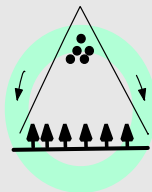
The activities of participants may be different while still being tightly coordinated through a mutually agreed common plan of action.

## Continuous Communication



Consistent and open communication amongst participants to build trust, assure mutual objectives and build common motivation.

## Backbone Support



A skilled staff and organisational form to build and manage the entire collective impact initiative by coordinating the participant organisations and activities.



**The challenge is place-  
based system reform  
and a cross-sectoral  
approach**