

A stylized house icon composed of thick, hand-drawn lines. The roof is red, and the walls and base are black.

RAISING THE ROOF | CHEZ TOIT



THE
UPSTREAM
PROJECT
CANADA



What is The Upstream Project?

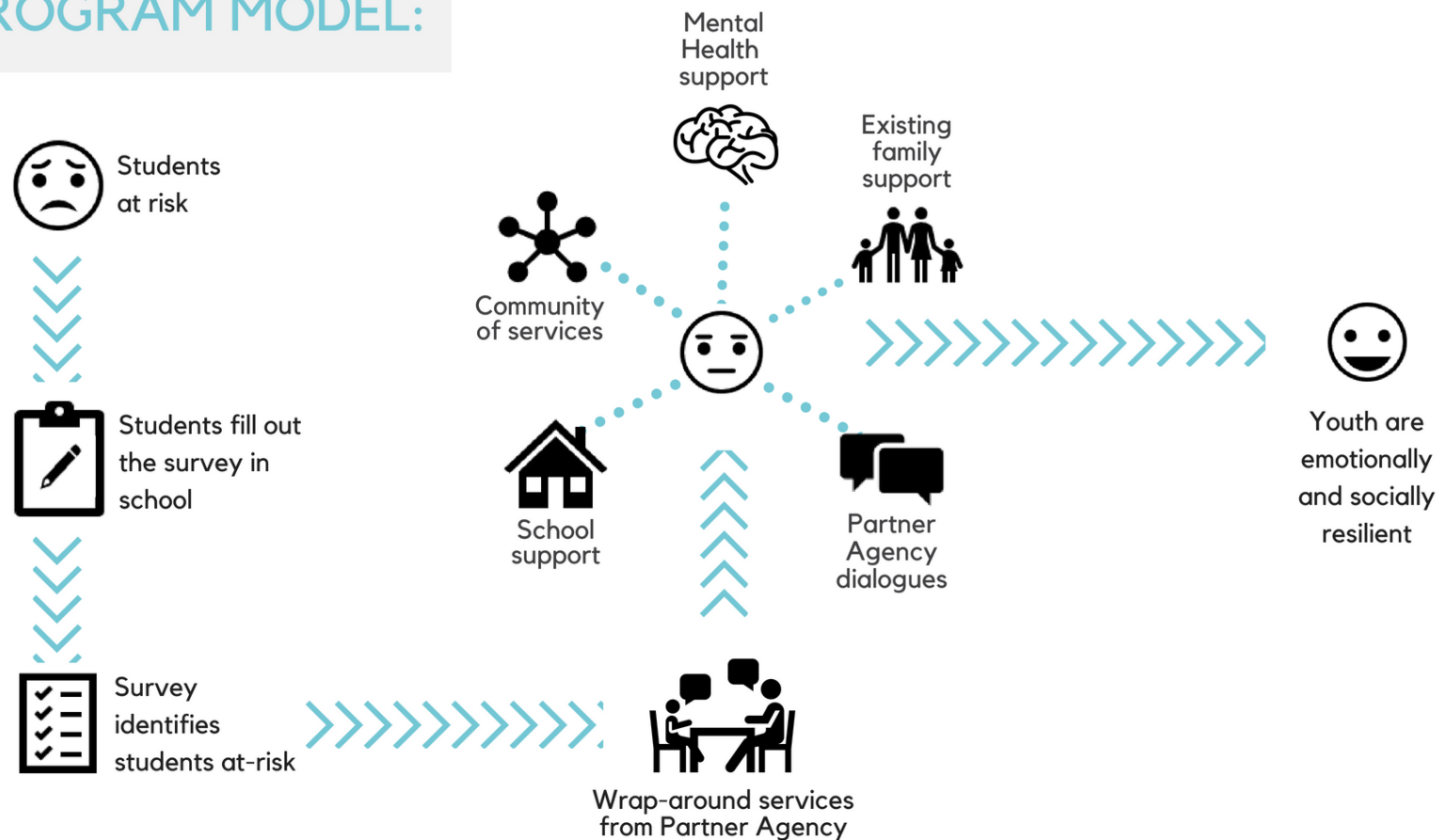
**The best way to address youth homelessness?
By working upstream to prevent it from occurring first place.**

- The Upstream Project will take innovative approaches developed in Australia and adapt them to the Canadian context.
 - **The Geelong Project (TGP)**
- Working with schools and local community agencies, The Upstream Project will identify students who are at-risk and connect them with the wraparound supports they need.



What is The Upstream Project?

PROGRAM MODEL:



Why Schools?



- School-based Prevention

Virtually every young person who becomes homeless **was in school at one point**, and was very likely in contact with an adult (teacher, guidance counselor, coach) who knew something was wrong.



Our Goals



- 1) Improve student well-being
- 2) Decrease school drop-outs
- 3) Decrease youth homelessness



What we have learned?

Survey Findings:

EARLY FINDINGS:



2,655
surveyed
students

Tier 1
at-risk of school
disengagement OR
psychological distress



OR



74.2%

Tier 2
at-risk of school
disengagement AND
psychological distress



AND



3.3%

Tier 3
at-risk of
homelessness



AND/OR
OTHER
FACTORS

3.2%



What we have learned?

Program Delivery Results:

- 3,467 students participated
- 507 received immediate follow-up
- 128 received services
 - 38 received various levels of case management
 - 90 received referrals to another program, or stated they would reach out on their own as needed



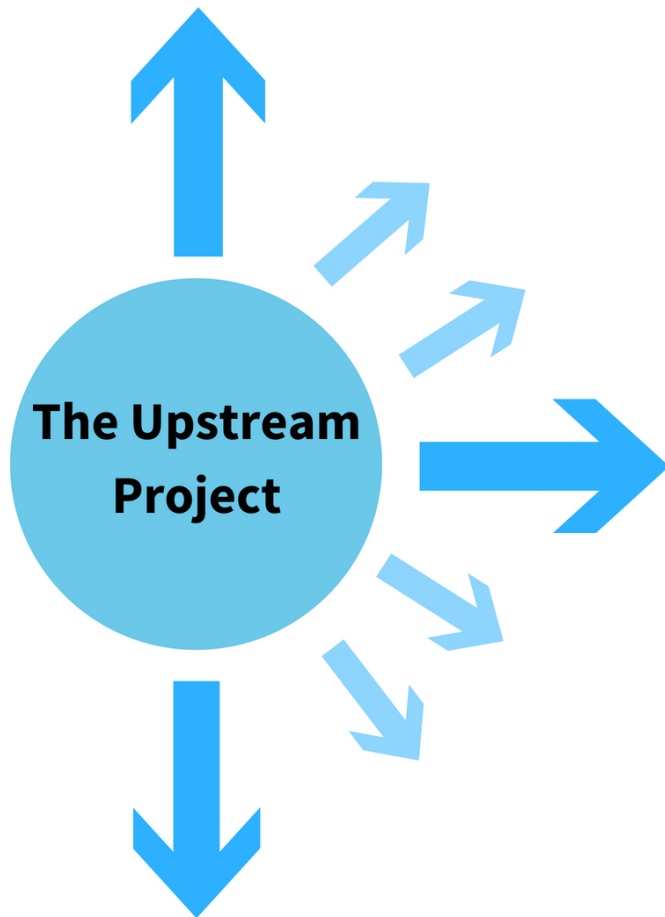
What we have learned?

Additional Learnings:

- At-risk students are not always known by school staff
- Not a *'one size fits all'* model
- Considerations for specific student populations (ie. ASD, MID, ELL and Indigenous youth)
- Coordinated community response
- Tools and supports for school staff
- Importance of youth engagement



Where are we headed?



1 Scale Up
Impacting laws, policy and funding.

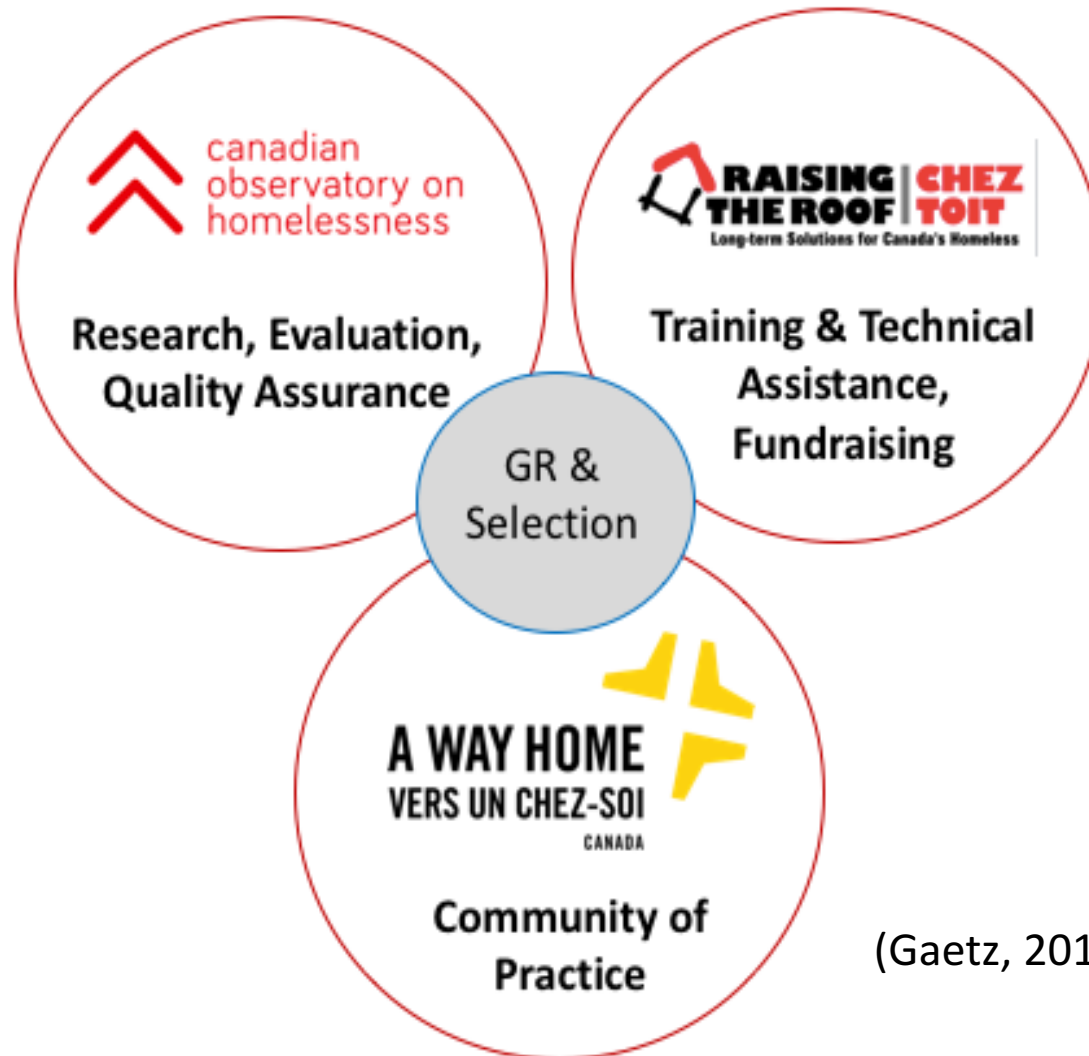
2 Scale Out
Impacting greater numbers.

3 Scale Down
Impacting the local level.

(Adapted from: Ridell and Moore, 2015, p. 3)



Where are we headed?



(Gaetz, 2018)



Where are we headed?

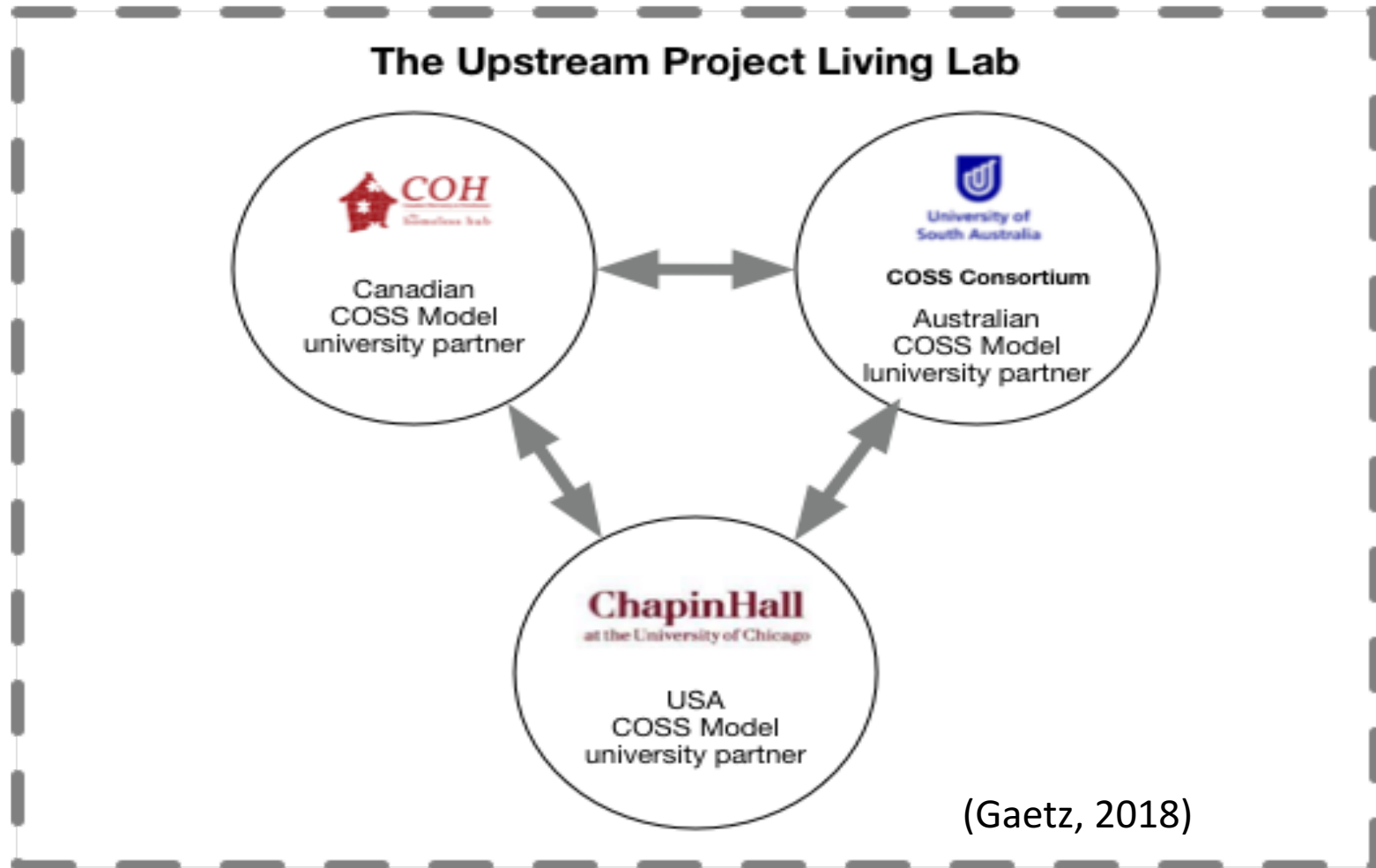
Research & Development:



(Gaetz, 2018)



Where are we headed?



For more information, please contact:

Elisa Traficante

Director of Community Initiatives

elisa@raisingtheroof.org

