

# Humanizing the Data through Service-based Counts and Vulnerable Sector Advocacy

**Alisha Christie, Kimm Kent & Peggy Vassallo**



# Land Acknowledgement

*Our work is rooted in Mi'Kma'Ki, the un-surrendered and ancestral territory of the Mi'kmaq people. We are all treaty people governed by the Peace and Friendship Treaties, first signed in 1726. We acknowledge the responsibility to deeply engage and move forward on the work of truth, reconciliation, equity, diversity, inclusion and accessibility.*

*We recognize the over 400 years of African Nova Scotians, a distinct people whose histories, legacies and contributions have enriched the part of Mi'Kma'Ki known as Nova Scotia.*

*May we continually shift our work toward reconciliation.*

# What we will cover

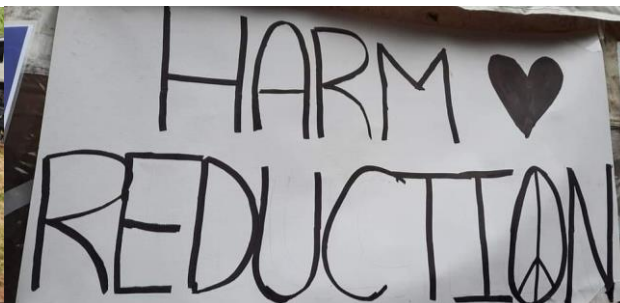
- Panelist Introductions
- Rural Count Panel Discussion
- Closing Thoughts & Count Resources





# The Peer Outreach Support Services and Education

Peer Outreach Support Services and Education (POSSE) facilitates non-judgmental Harm Reduction and Human Rights training for youth and young adults ages 15-35 to provide peer support, crisis intervention, harm reduction street-level outreach, services and education while fostering communities of care.







# Nova Scotia Health Authority

“Public health is about promoting and protecting health and preventing disease and injuries so that all Nova Scotians can live healthier lives.

Solutions to public health issues require long-term, comprehensive plans and many partners – working together to change the social and physical environments where we spend time, and to address root causes such as the social determinants of health and inequities in our society.”

- Nova Scotia Health



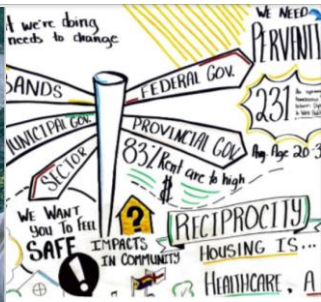
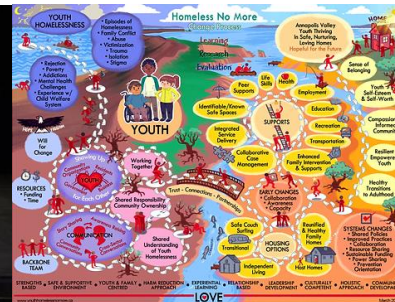


# Homeless No More

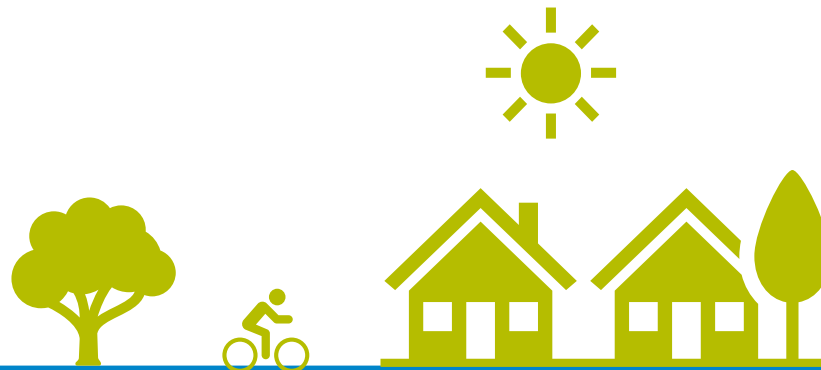
The Homeless No More Initiative focuses on supporting a dynamic sector of organizations and support services addressing intersectional issues related to the housing and homelessness crisis.

## The initiative aims to:

- To amplify their work
- To connect services and resources
- To influence policy, funding, and systems change
- To support organizations in advocacy and data collection



**Across Mi'Kma'Ki (Nova Scotia),  
we are witnessing and  
experiencing the impacts of the  
housing and homelessness crisis**



*Kentville*  
A BREATH OF FRESH AIR

**The sector needed data to support and represent the true work of organizations**

**The data is a tool to humanize the experience of rural homelessness**





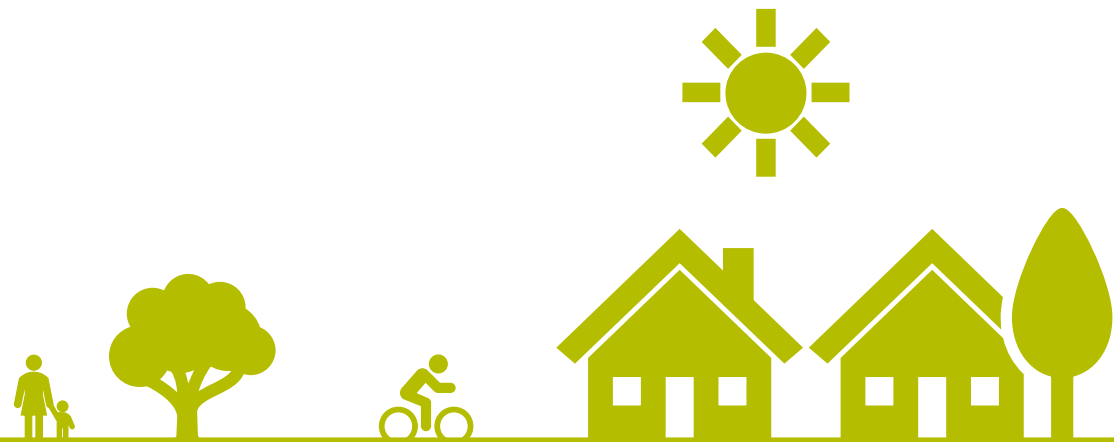
## **Question 1:**

**Based on your experience,  
why do we use a  
Community Support and  
Service-Based count in rural  
areas?**



## Question 2:

**What has the count meant for you, your organization and your community?**



**Community Support and Service-Based Counts are best practice tools in capturing the lived reality of rural homelessness.**

**Looking for resources to implement and start a count in your area?**



**Thank you | Merci | Wela'in**

# Recommended Resources

[Homeless No More Website](#)

[Eastern NS – How to Guide](#)

[Rural Development Network – Step-by-Step Guide to Estimating Rural Homelessness](#)





# Contact Information

**Alisha Christie** – [achristie@kentville.ca](mailto:achristie@kentville.ca)

**Kimm Kent** – [kimm.kent@mymnfc.com](mailto:kimm.kent@mymnfc.com)

**Peggy Vassallo** -

[margaret.vassallo@nshealth.ca](mailto:margaret.vassallo@nshealth.ca)

**Mary Sweatman** –

[mary.sweatman@acadiau.ca](mailto:mary.sweatman@acadiau.ca)

