




Soft Landing & Rapid Re- Housing Initiative

CHOICES FOR YOUTH

- Founded in 1990
 - Registered non-profit, charitable organization
 - Multiple service and housing sites in St. John's and surrounding area
 - 130+ staff members
 - 1500+ youth served annually
-

Through innovative programming and social enterprises, we help at-risk youth secure and maintain stable housing, education and employment, while working toward family stability and better health.



WHAT WE OFFER

HOUSING

EMPLOYMENT
& EDUCATION

FAMILY

HEALTH

OUTREACH



HOUSING

Choice for Youth focuses first and foremost on supporting youth to find stable housing, as a critical step to reduce crisis and as an important springboard for accessing additional supports.

We operate a range of housing options with varying levels of support to reflect the unique needs of individuals and to better meet the needs of each young person we meet.

Housing Supports and Services Program currently include:

- Shelter for male and male identifying youth
- Rally forward Program
- Lilly Building Program
- Soft Landing Program



Choices for Youth Housing Supports and Services



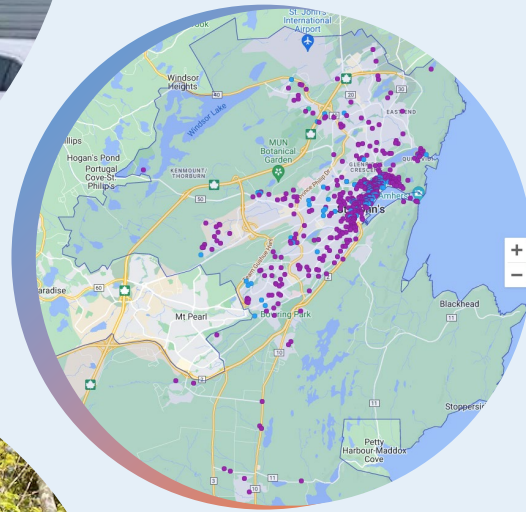
Soft Landing Rapid Rehousing Program

- Created in October 2021 and was initiated in February 2022
- Developed in response to gaps in services within our Housing Programs and Services.
- Created a streamlined, centralized referral process for all housing supports and services.
- Eliminated (almost) waitlists for Housing Supports within Choices for Youth.
- Creating stability in our youth.





+



Soft Landing Rapid Rehousing Program

- Between 2020 and the fall of 2021, the vacancy rate fell by half, continuing to decline
- Come Home Where? Airbnb's impacts on housing in St. John's
- Shelters are full and emergency shelters are deplorable

○



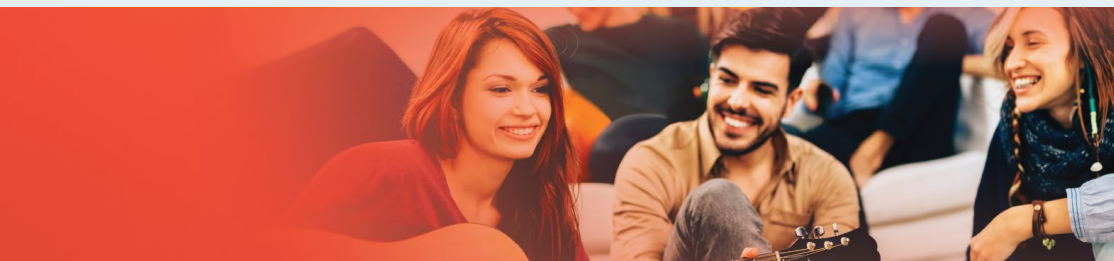
Soft Landing Rapid Rehousing Program

- Comprised of
 - Housing Finder
 - Shelter Diversion Worker
 - Housing Stability Worker team

home

[hom] noun

the place where you will always be
surrounded by those who love you



Soft Landing Rapid Rehousing Program

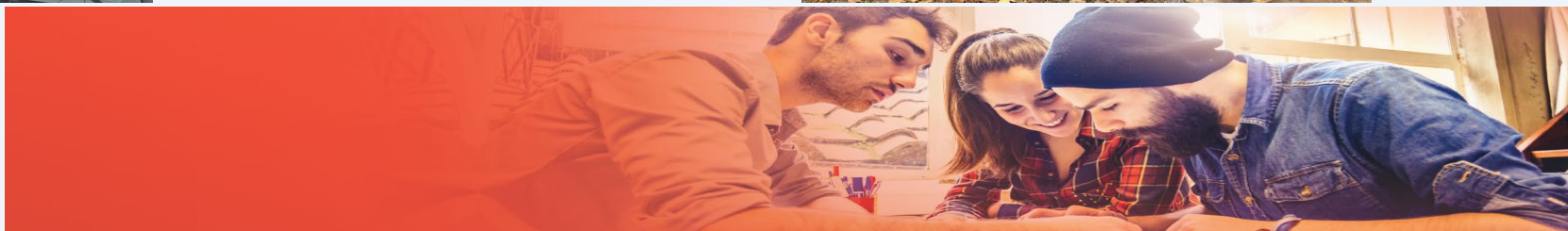
- Housing Finder – critical in uncovering hidden housing markets, creating relationships with homeowners.
- Housing Stability Workers – provide ongoing housing support and life skill development to youth in the community.
- Shelter Diversion Worker – supports youth in the shelter to expedite their transition from homelessness or to divert from homelessness.



SOFT LANDING RESPONSE TO HOUSING CRISIS

The Idea

- Creation of our own property management style response to develop housing stock.



SOFT LANDING RESPONSE TO HOUSING CRISIS

The Implementation

- Rooms for rent in a 5 Bedroom home listed on July 6th, utilities included for \$600 each (\$3000 total rent)
 - 5 room rentals at \$700 per room/per month
 - \$3500 collected - \$3000 rental = \$500 per month to cover monthly cleaning, internet/Tv, toilet paper, dish and laundry detergent as well as any damages that may occur.
- Rental agreement signed and first youth moved in July 15th with 5 tenants in place by August 1st.

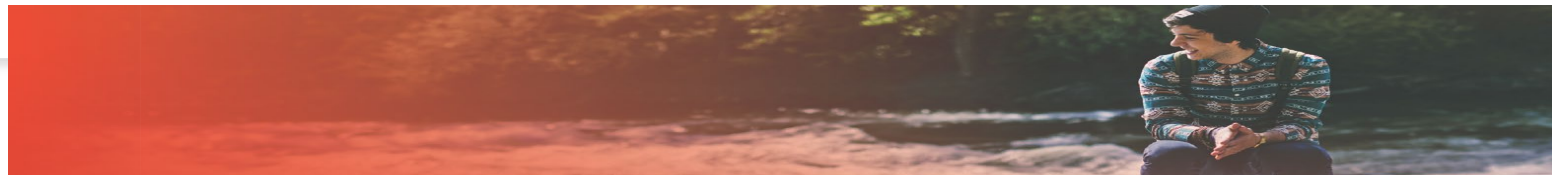
- 2 Apartment, 5 Bedroom(2 bed basement apartment, 3 on main floor) home listed on August 8th for \$2800 POU.
 - 5 room rentals at \$700 per room/per month
 - \$3500 collected - \$2800 rental = \$700 per month to cover utilities, monthly cleaning, internet/Tv, toilet paper, dish and laundry detergent as well as any damages that may occur.
- Rental agreement signed and 4 youth moved in September 1st with 5 tenants in place by September 15th .





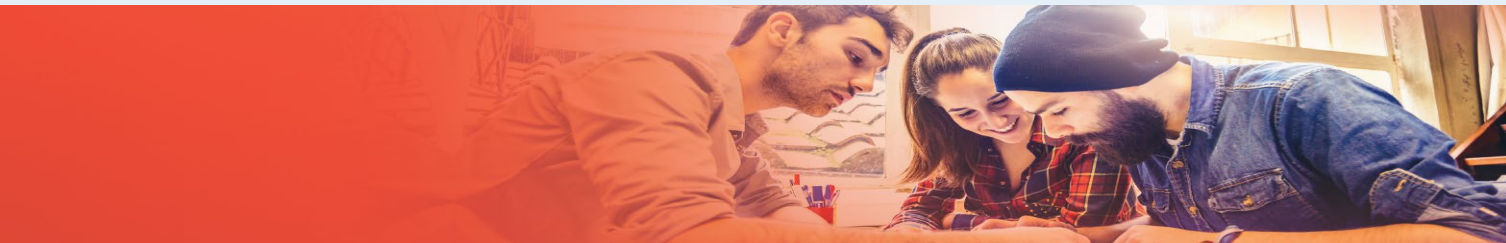
SOFT LANDING MAKING A HOME

- Gift cards for decorations
- Good quality used furniture
- Kitchen Supplies
- Linens and pillows



SOFT LANDING CREATING SKILLS TO MAKE A HOME

- Weekly check ins
- Life Skill development
- Goal Setting



SOFT LANDING RESPONSE TO HOUSING CRISIS

- The Impact
 - 6 Homes added to our housing stock
 - 5 private market landlords enjoying a successful socially conscious business partnership, with more willing to partner
 - Savings of roughly \$173 dollars per day that would have been paid by the government to for-profit emergency shelter beds
 - ($\$800 * 12 \text{ months} = \$9600 / 365 \text{ days} = \26.30 per day to provide a Home to a youth VS. \$200 per day for private shelter)
 - 29 youth have been provided a safe, affordable **Home** in addition to our other youth that have found a Home with other landlords



Questions

- Greg Quinn
 - Soft Landing Program Coordinator
- gquinn@choicesforyouth.ca

