

Our Place Peel

**Youth Homelessness and
Sexual Exploitation:
Interventions & Prevention**



Here for youth.

Acknowledgments

Our Place Peel acknowledges the land of which we serve as the traditional territory of The Huron-Wendat, Haudenosaunee, Anishinabek, Métis and the Mississauga of the Credit First Nation.

We recognize and deeply appreciate their connection to the land. We also recognize the contributions of Métis, Inuit, and other Indigenous peoples have made, both in shaping and strengthening our community, province, and the country as a whole.

Our Place Peel is also committed to diverse and inclusive programs for all. We remain committed to our efforts to rid systems of oppression that deny individuals the right to equitable treatment, or access. We acknowledge that systemic and institutionalized racism serve to limit the opportunities and potential of racialized communities, and Our Place Peel remains dedicated to listening, learning, and taking actionable steps to ensure equitable and inclusive access for all.



Here for youth.

Our Place Peel

Youth Serving Org.
Peel Region, 1.5mil.

Our Programs:

- **Shelters**
- Outreach
- Diversion
- Family and Natural Supports
- **Anti-Human Trafficking Integrated Service Hub**



Here for youth.

The Intersections

Youth experiencing homelessness are not only at increased risk of exploitation/sex trafficking, they are targeted.

- No fixed address
- Limited interactions
- No expected routine / Transiency
- Limited education
- Little to no money
- Trauma/ Maltreatment/Abuse
- Lack of trust in systems

- Psychological Trauma/Abuse
- Seeking Connection/Family
- Substance Use
- Age
- Gender / Orientation 2SLGBTQ+
- Race / Ethnicity
- Systems Exits (CW, CJ)



Intervention

Collaboration

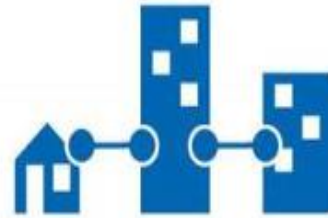
Collective Will

The Region of Peel's 3 Pillar Strategy



Prevention

Increase awareness of human sex trafficking through coordinated prevention and education programming.



Intervention

Increase access to dedicated and reliable services that are easy to navigate for victims and survivors.



Exits/Housing

Increase access to dedicated, safe and supportive housing for victims and survivors.



nCourage
a safe place to share



Here for youth.



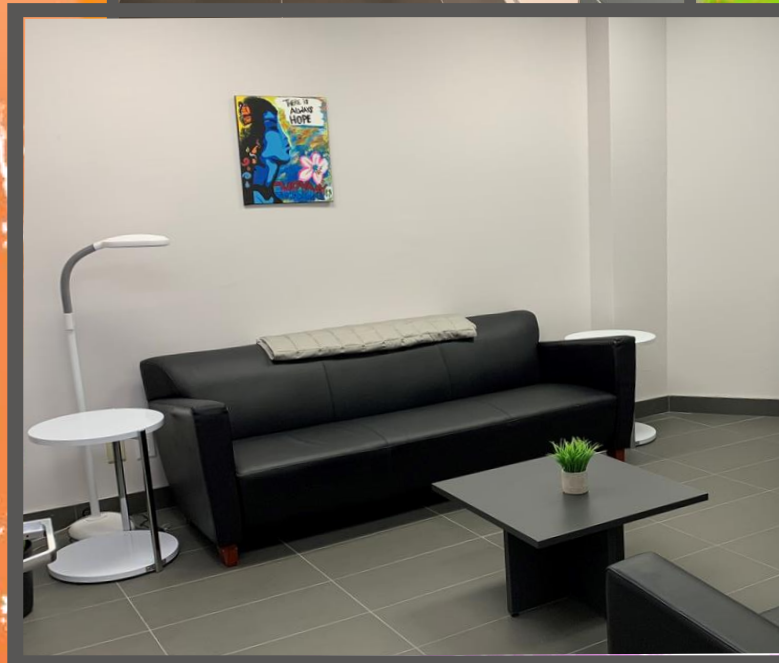
- Client Centered
- Trauma-Informed
- Cultural Competence & Humility
- Choice
- No Barrier
- Holistic
- Dedicated & highly trained staff in HT



Here for youth.

Safe Space

nCourage
a safe place to share





Data

- '20-'21 = 68
 - '21-'22 = 110
 - '22-'23 = 164
 - '23-'24_{YTD} = 87
- 65 - # of different referral organizations
 - Avg. 14.5 new victims/survivors per month
- 85 - # of different referral Pathways & Partners

24/7

- Partnered response

How to Increase Shelter Safety

- Trained staff
- Do not stockpile – individual rooms
- Client Centered & Trauma Informed (Training, Policies)
- Privacy for client conversations
- Response Protocols
- Educate the youth – Talk about it!

Opportunities for Intervention in Shelters

- Trained staff (Patterns, Behaviors, Signs)
- Client Centered & Trauma Informed (Training, Policies, Relationship based Case Management)
- Choice & Trust
- Collaboration
- Response Protocols
- Prevention Programming
- Housing First for Youth

Community Response Protocols

- 24/7 Response
- Designated Safe Beds
- Dedicated Care Paths
- Coordinated System/Dedicated Coalition/Committee
- Wrap Around Outreach & Aftercare

Thank you.

Dani Mills – Sr. Manager of Outreach
Services/nCourage

dmills@ourplacepeel.org

647.678.8313

