



homeward trust
edmonton

Tracy Borrelli MA
November 8, 2023
CAEH Halifax

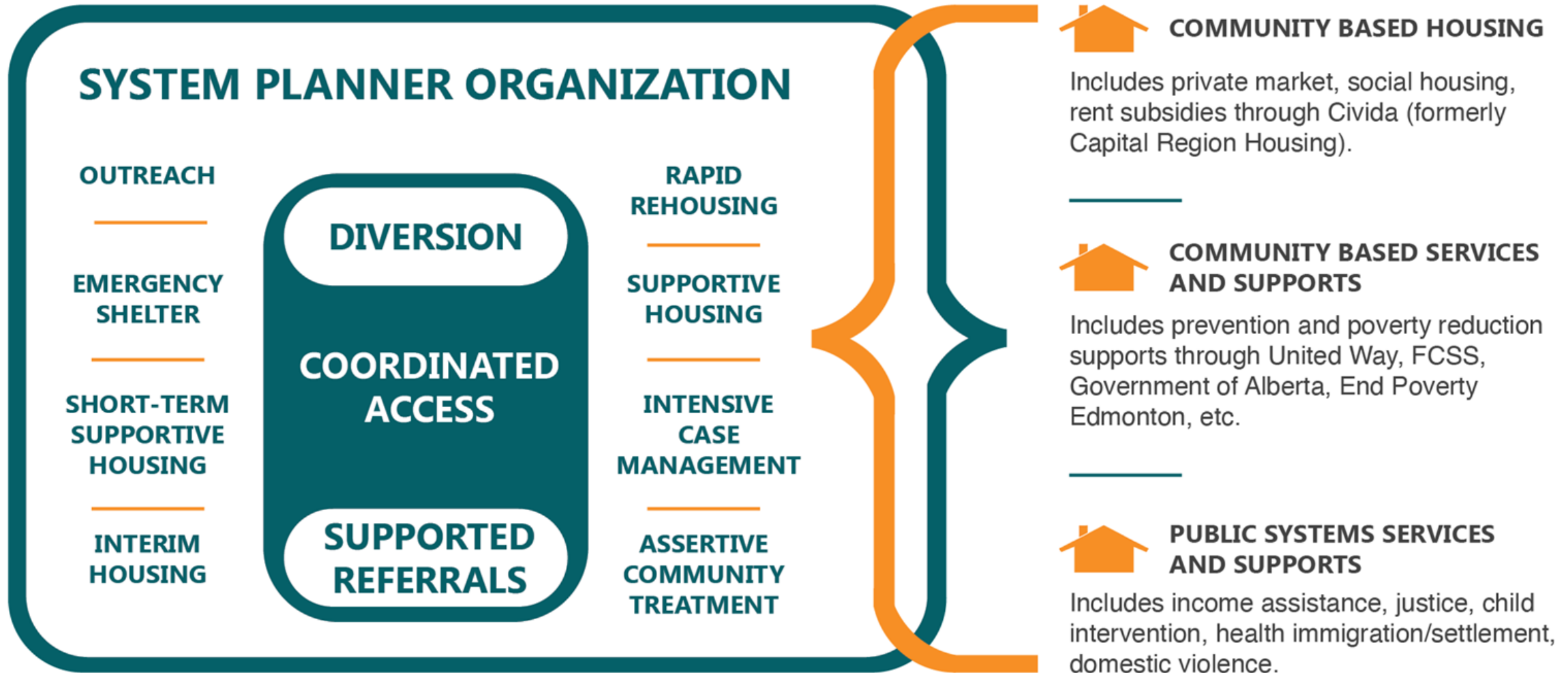
Action Research on Chronic Homelessness in Edmonton

Embedding Research and Development in
Systems Change

Land Acknowledgment.

Introduction.

Introduction: Homeward Trust



Data: Scale of the Work



One Legacy case-management system

Data: Scale of the Work



60 Coordinated Access partners



100 Funded programs, projects & interventions

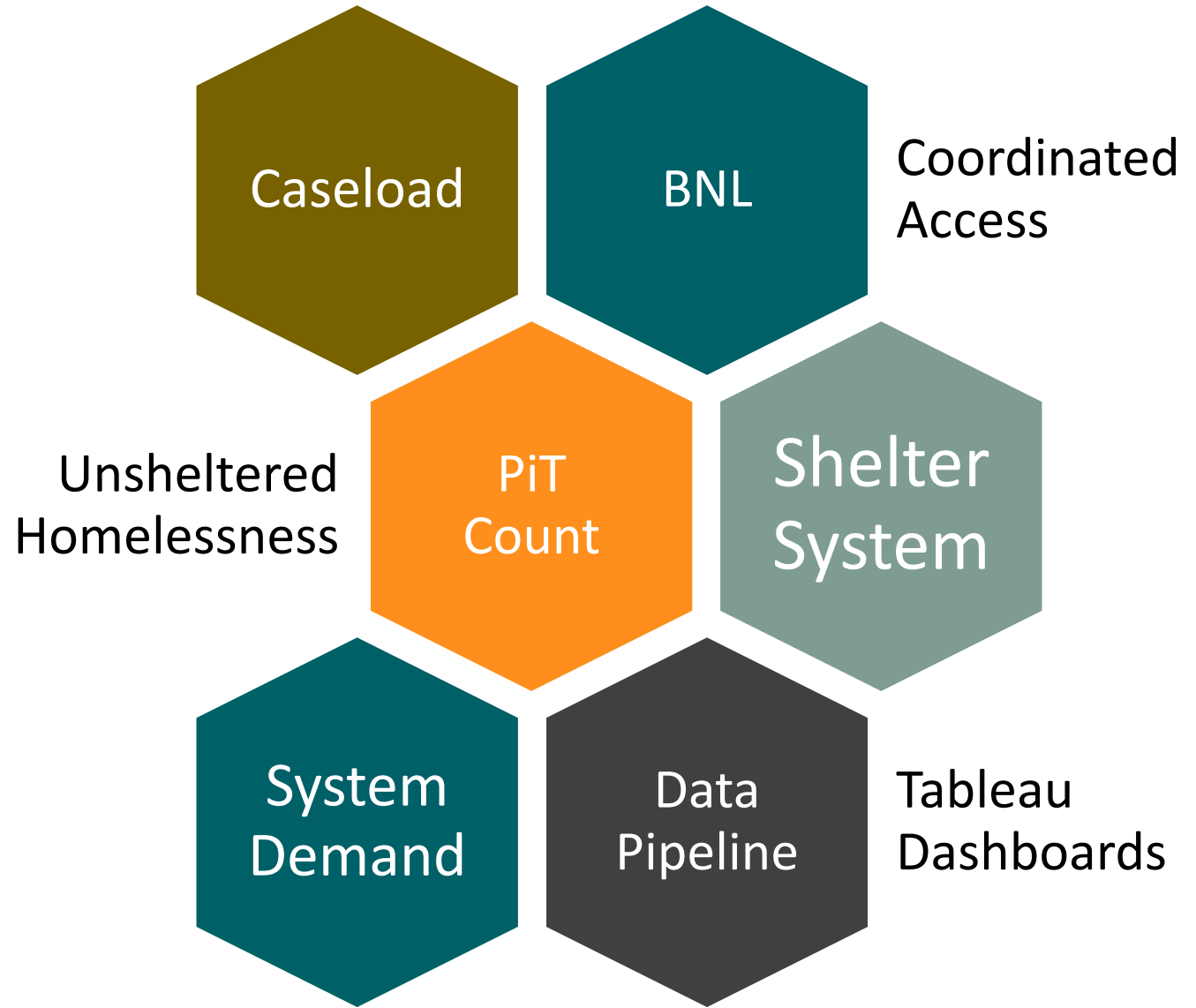


780 User accounts that enter data every day



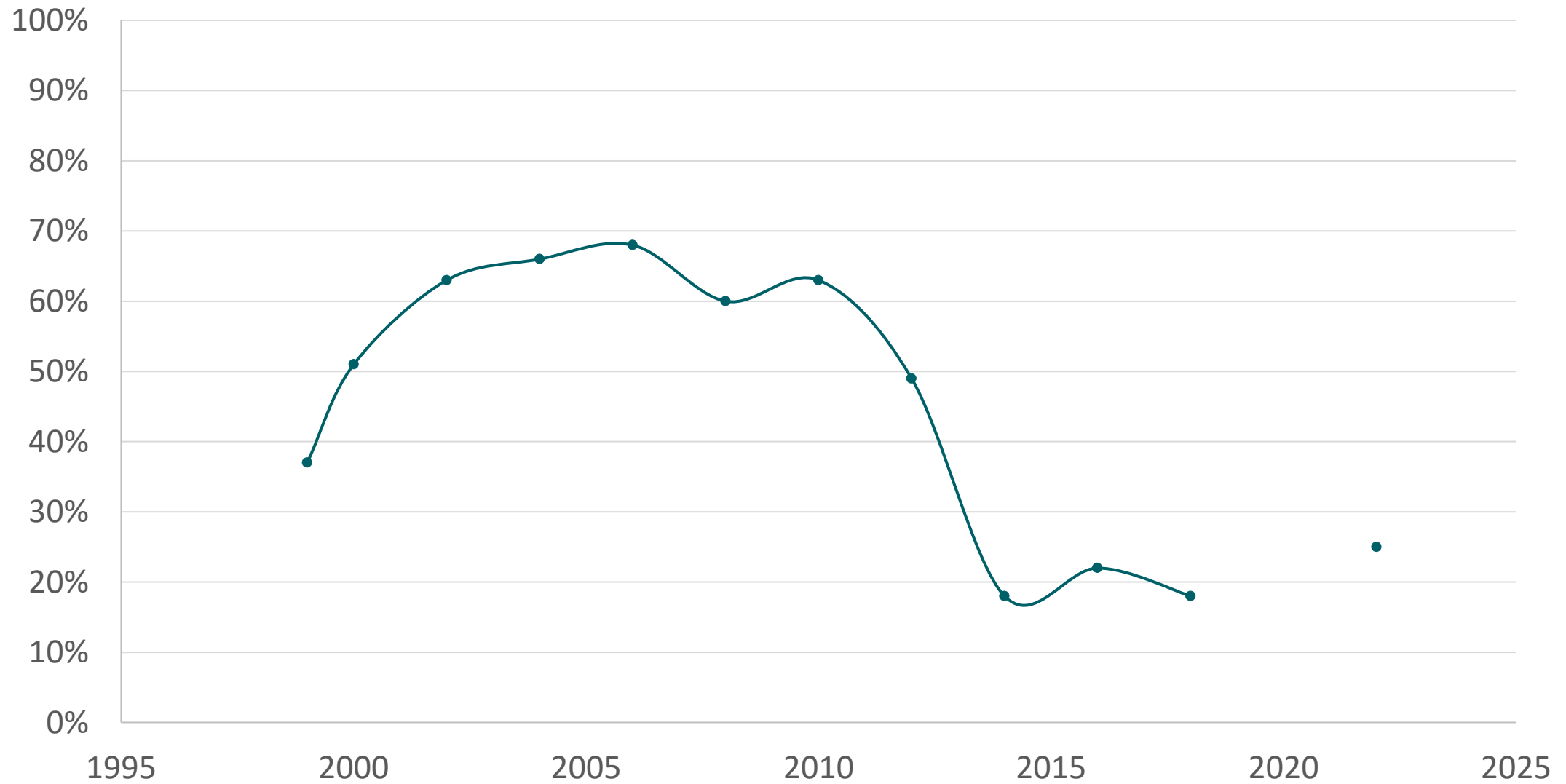
6000 Individuals active on Edmonton's By Name List

Current Data Story:

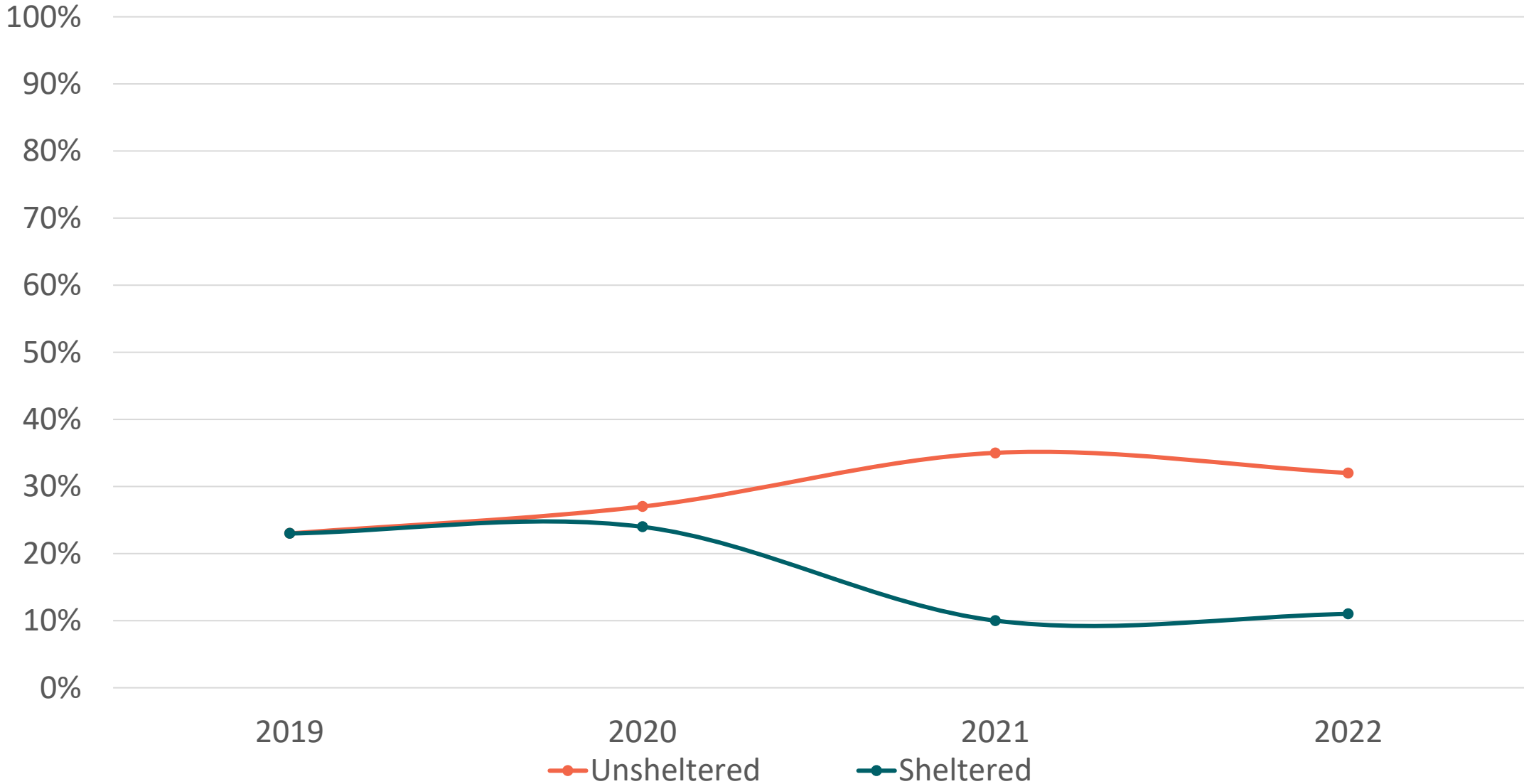


Unsheltered Homelessness.

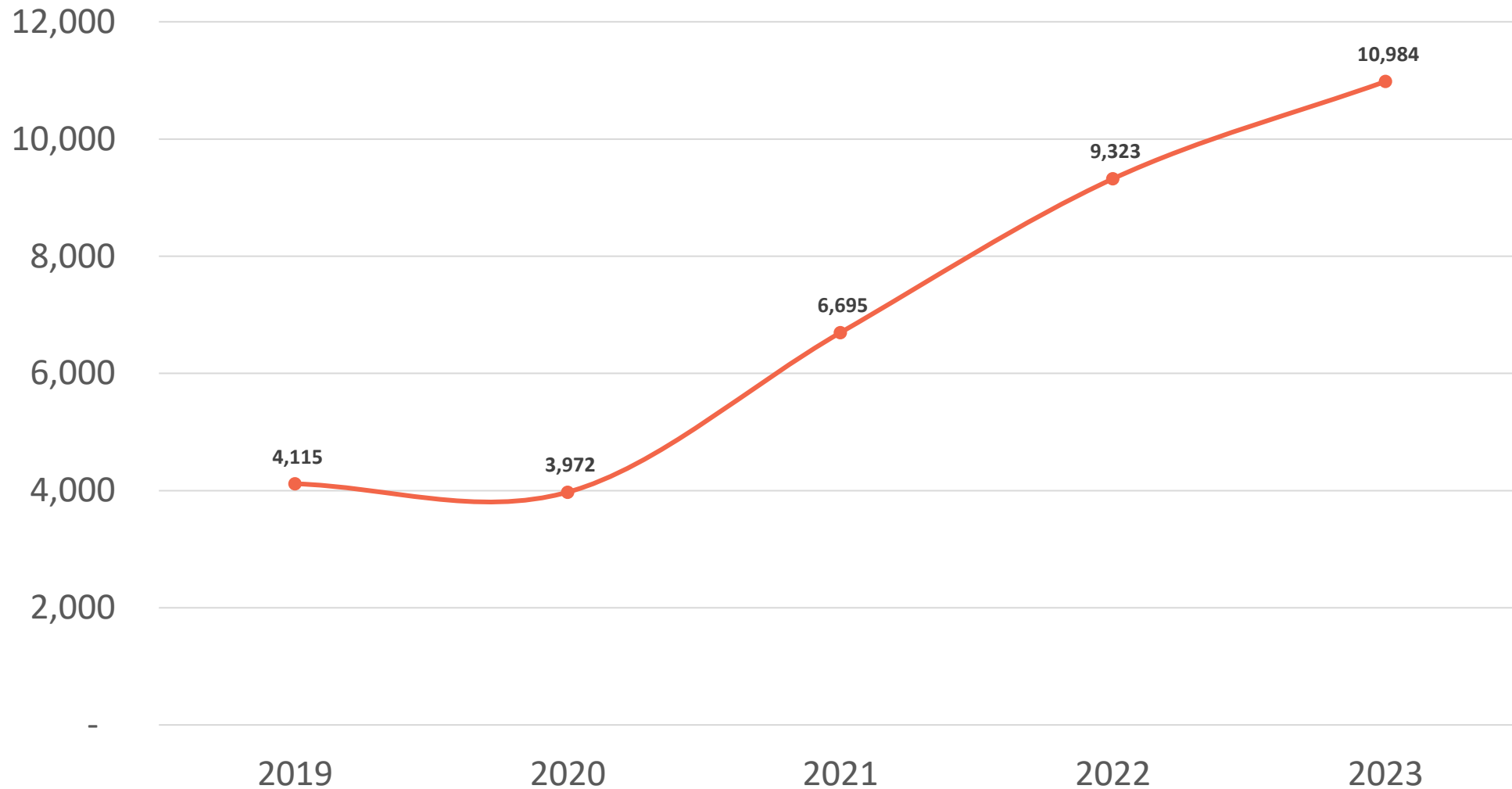
Point in Time Count: Percent Unsheltered Over Time



By Name List: Unsheltered Over Time



Encampment Complaints: Number of Calls to City Over Time



**If our approach was working
before, why isn't it working now?**

Shifting Context



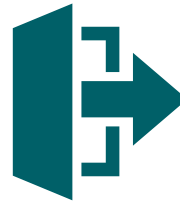
Increases in unsheltered, decreases in sheltered affects intervention types.



Policy changes shifts in governments affecting funding and homelessness rates



Covid-19, affected housing supply and intervention delivery.



System discharges: Increased exits from public systems leading to higher demand of interventions.



Economic downturn: Job losses in oil and gas, housing costs rising faster than incomes.

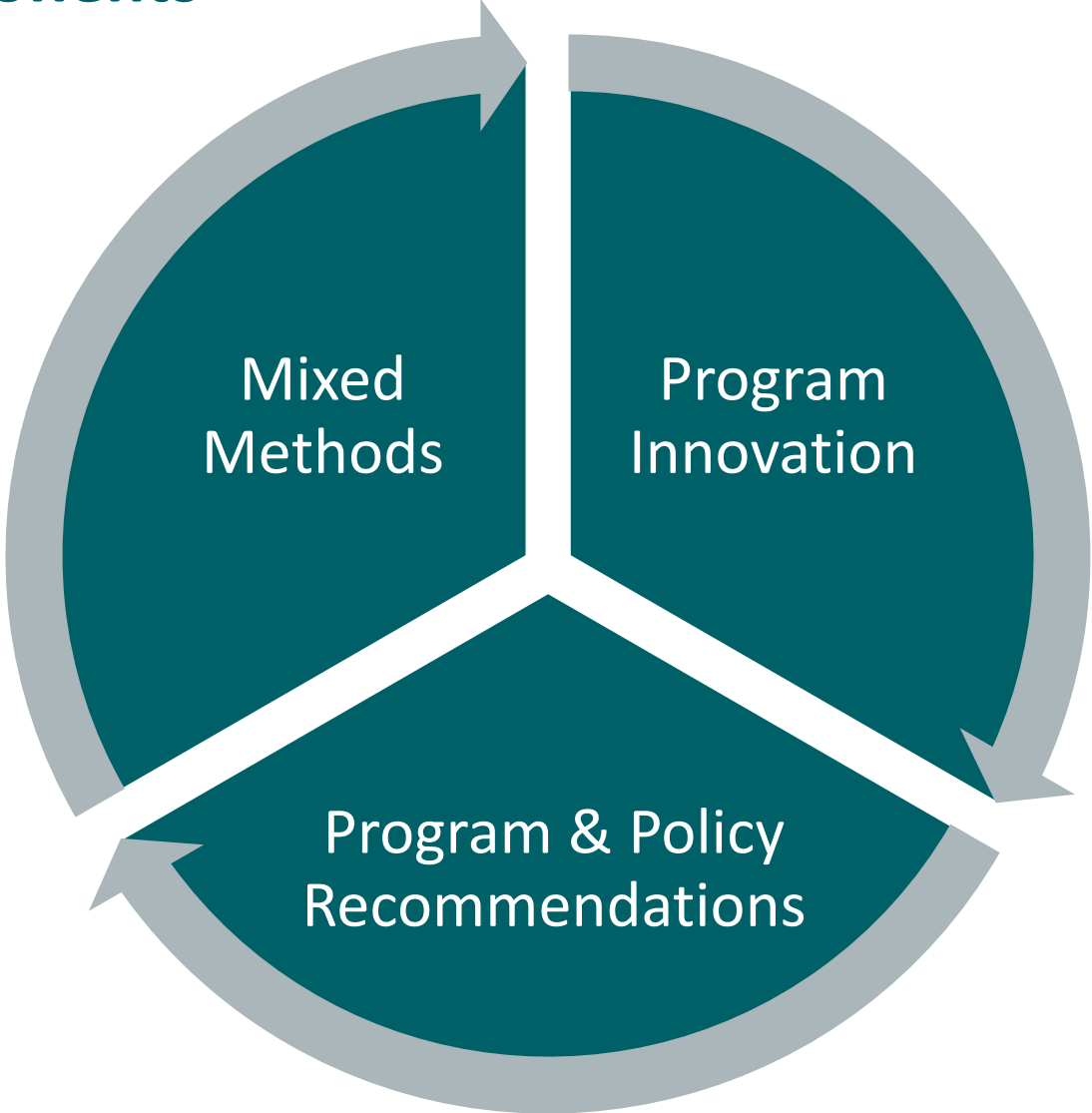


Societal attitudes: growing awareness affecting public support for strategies

The opportunity.

Learning through Doing: Action Research on Chronic Homelessness.

Major Project Components



The power of storytelling in systems change.

Cross-systems Work



Research Participants

Advisory Table

6 Programs

Edmonton ARCH Advisory Table:



Lived Experience Committees

Indigenous Advisory Council

Research Committee

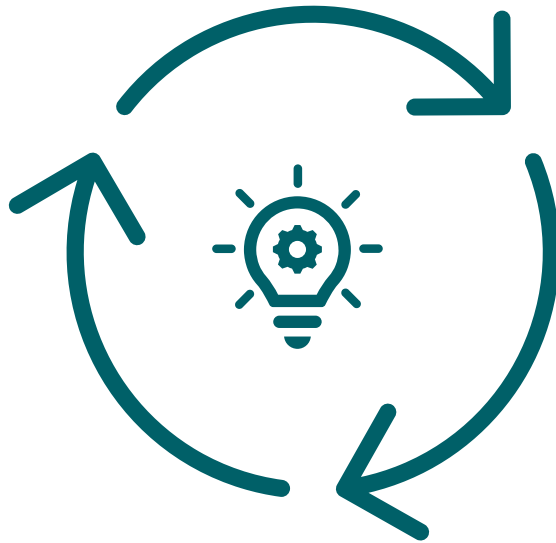
**Community-based approach prioritizes
Indigenous voice, lived expertise.**

Community Based: Mixed Methods



The role of innovation.

Program Innovation

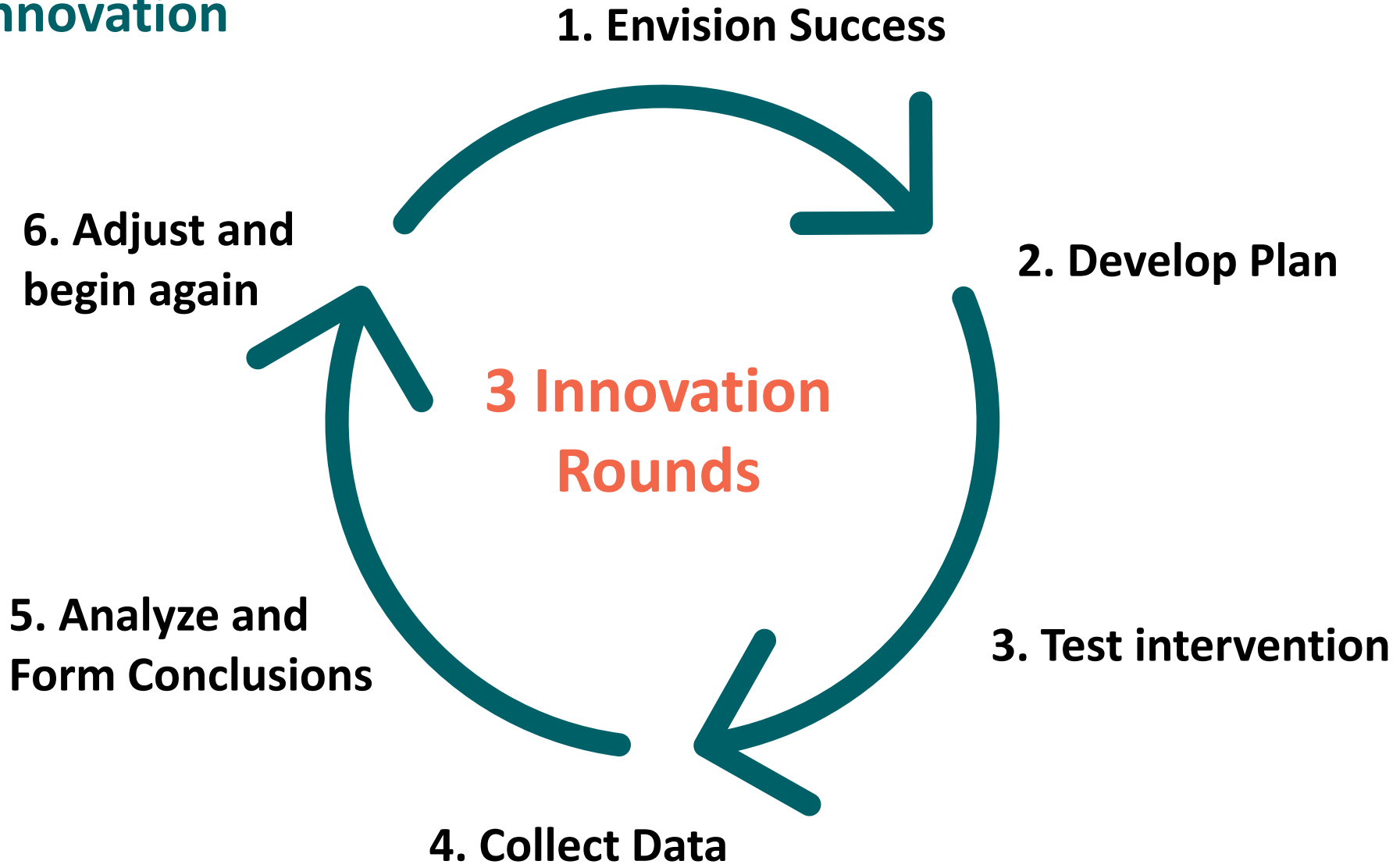


2 Outreach & Encampments Teams

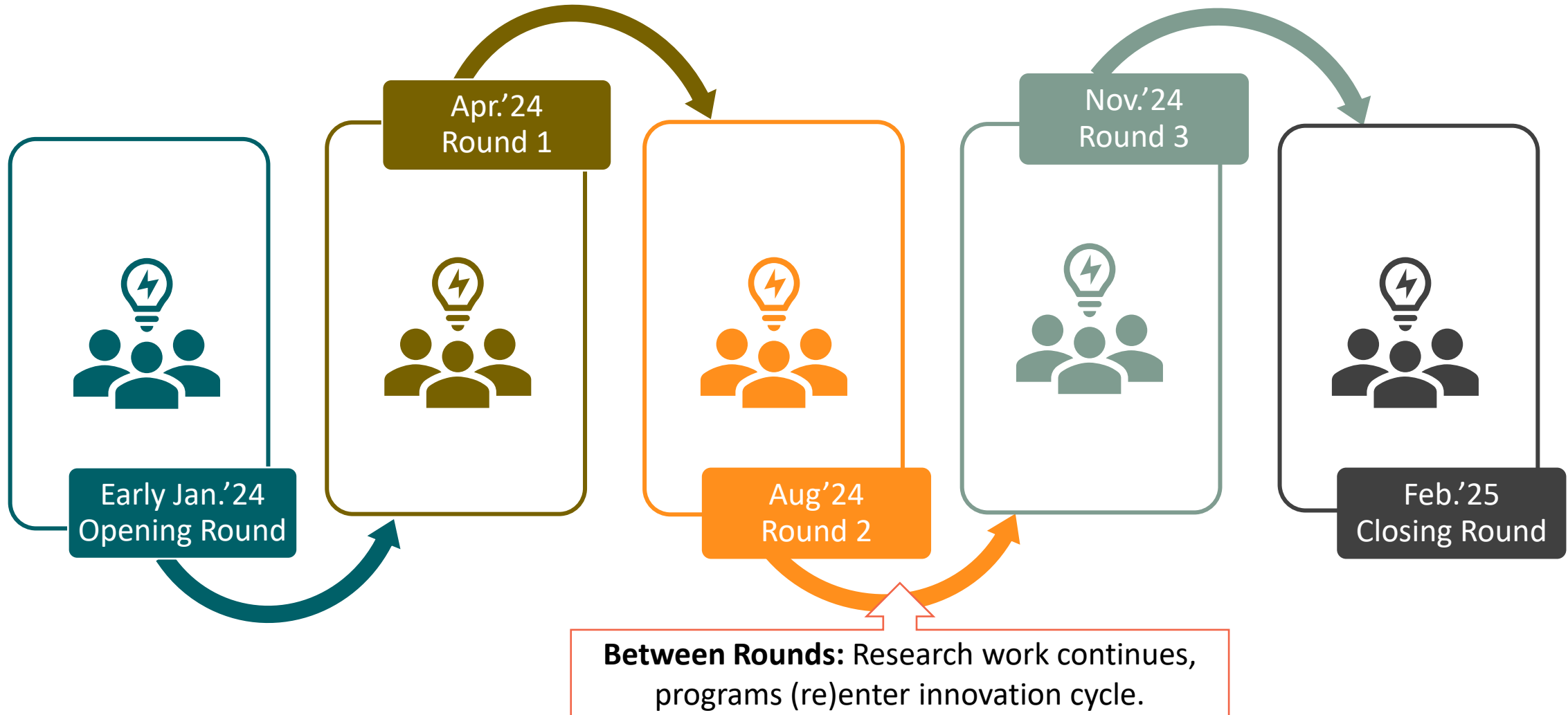
2 HF Scattered Site Programs

2 HF Congregate Programs

Program Innovation



Reflective Learning Rounds Calendar



Policy and program recommendations.

Knowledge Mobilization



Conclusion.

Thank You!

— Tracy Borrelli

Planning and Evaluation Specialist

Homeward Trust

tborrelli@homewardtrust.ca

homewardtrust.ca | [@homewardtrust](https://www.instagram.com/homewardtrust)

