

A Framework for Ending Women's and Girls' Homelessness

CAEH 2016

Authors

Abe Oudshoorn, Western University

Shelley Yeo, Women's Community House

Amy Van Berkum, Western University

Cheyenne Ratnam, Project What's the Map?

Emily Paradis, University of Toronto

Babli Nessa, We are for Women and families support services

Susan Macphail, CMHA – My Sister's Place

Cheryl Forchuk, Western University

Kristy Buccieri, Trent University

Marleny Bonnycastle, University of Manitoba

Helene Berman, Western University

Purpose

- Solution focused
- Gender lens
- Assisting communities to move forward
- A resource

Process

- CAEH 2014 roundtable
- SSHRC Connection grant
- Ongoing refinement

What is home?

1. A right
2. Safe
3. Affordable
4. Quality
5. Premanent
6. Self-determined
7. Autonomous
8. Supported, if necessary
9. Accesible
10. Inclusive of family members
11. Free from surveillance
12. Community
13. Land
14. Private
15. Not burdensome to others

The Diversity of Women and Girls

- Women and girls with children;
- Young women and girls;
- Older women;
- Women and girls engaged in survival sex;
- Women and girls who have been trafficked;
- Women and girls involved in the judicial system;
- Women and girls who identify as LGBTQQQIP2SAA;
- Indigenous women and girls;
- Newcomer women and girls;
- Rural/remote women and girls;
- Women who have served in the military.

Framework



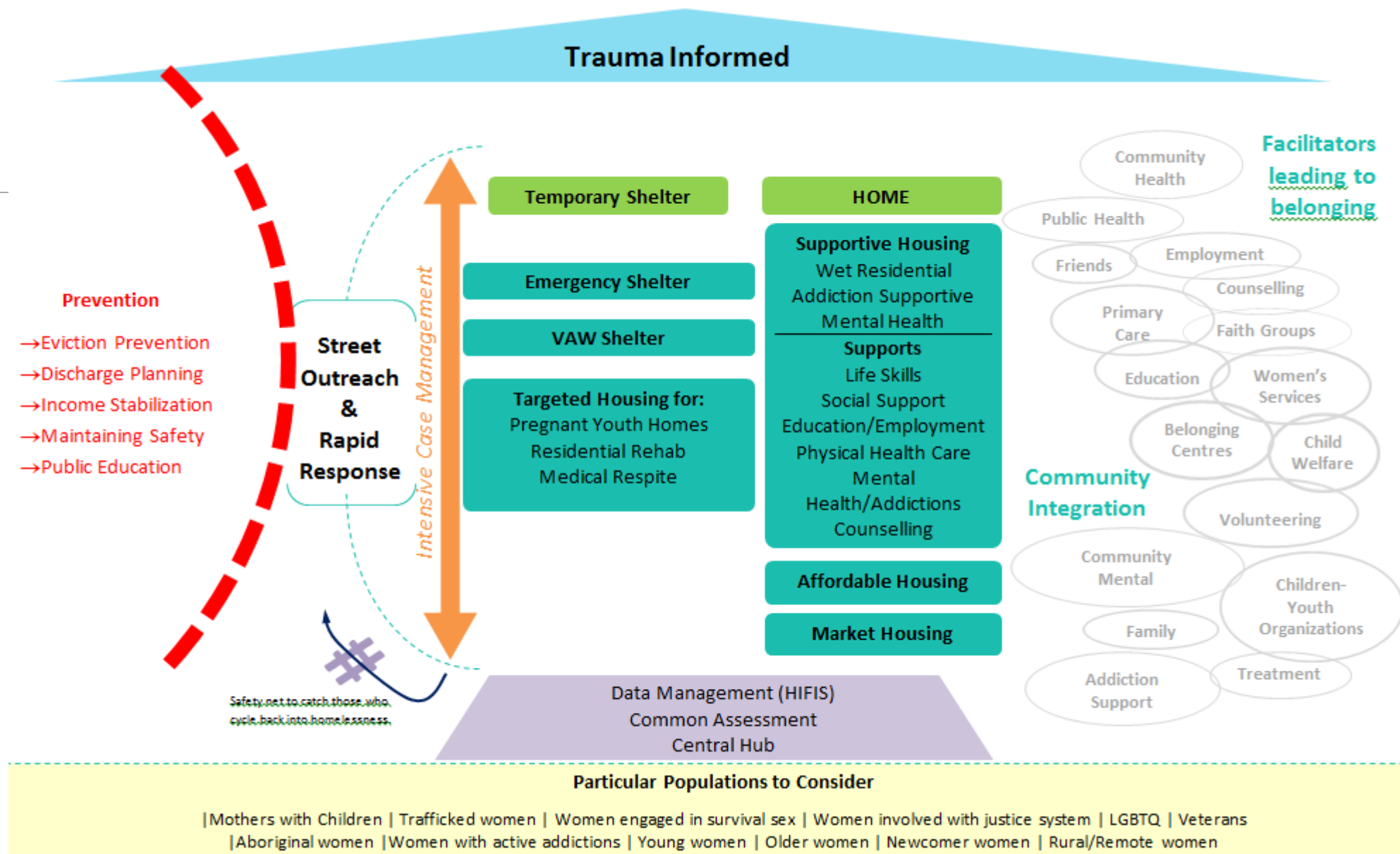
Long-Term Solutions

- Ending poverty
- Ending violence against women
- Addressing the link between poverty and motherhood
- A national housing strategy
- Ending discrimination
- A justice system that works
- Child and mother welfare
- Coordinated research

Community Transformation

- Become a trauma-informed community
- Prioritize safety
- Be led by women, including women with lived experience
- Foster community organization, mobilization, and action
- Be unabashedly feminist
- Collaborate across systems
- Prioritize choice and self-determination

Local Strategies

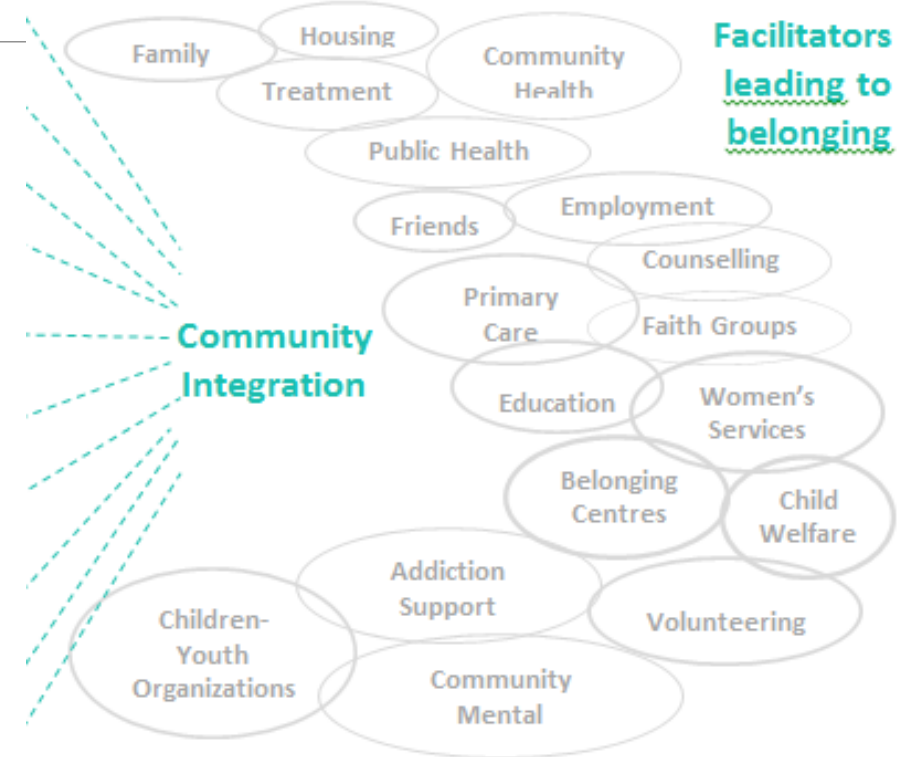


Primary Prevention

Income stabilization

Violence prevention


Comprehensive community supports



Primary Prevention

Systems of concern and opportunity

- Child welfare
- Education
- Immigration
- Justice
- Healthcare



Prevention

- Eviction Prevention
- Discharge Planning
- Income Stabilization
- Maintaining Safety
- Public Education

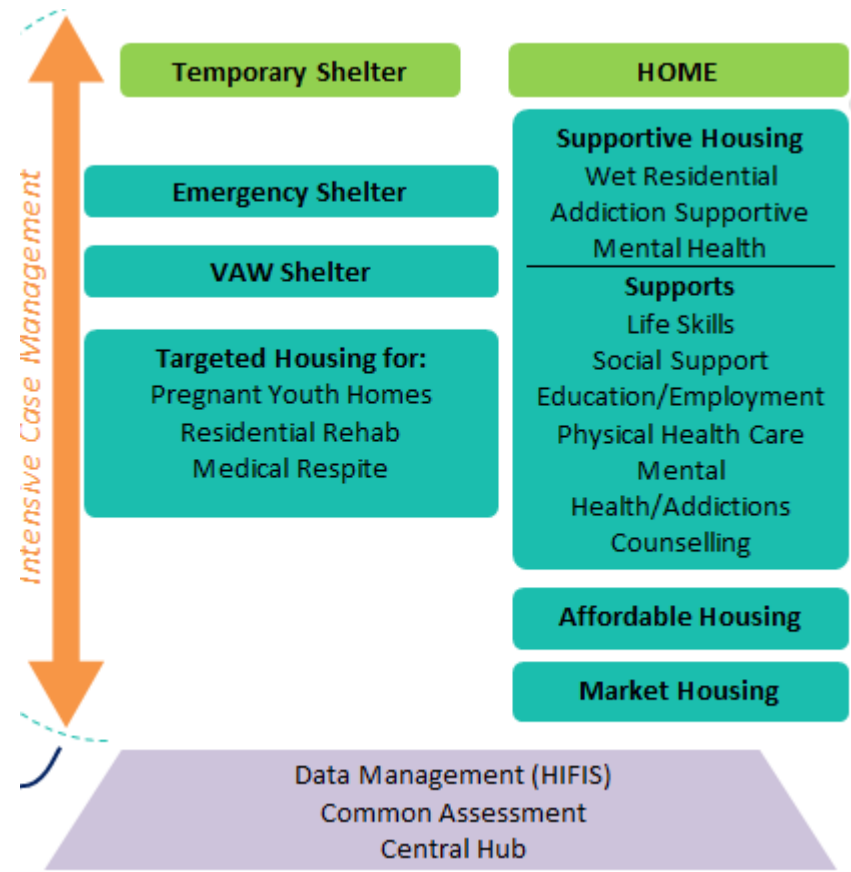
Temporary Shelter

High needs = high support

Intensive case management



Coordinated System



Particular Populations

Particular Populations to Consider

| Mothers with Children | Trafficked women | Women engaged in survival sex | Women involved with justice system | LGBTQ | Veterans
| Aboriginal women | Women with active addictions | Young women | Older women | Newcomer women | Rural/Remote women

Putting the Framework to Work

Thoughts

