



Region of Waterloo

20K Homes Campaign Waterloo Region



ALL ROADS LEAD TO HOME

CAEH National Conference on Ending Homelessness
November 2, 2015

Waterloo Region

- Includes cities of Cambridge, Kitchener, Waterloo & 4 townships
- 10th largest urban area in Canada and 4th largest in Ontario
- Approx. \$12M annual funding to address homelessness



Population 560,000

CAMPAIGN COMMITMENTS



Knowing Every Person By Name

- Registry Week took place Nov 30 – Dec 1, 2014
- [Registry Week Snap Shot](#)
- [Registry Week Pilot Report](#)
- [20K Homes Waterloo Region Video](#)



Common Assessment Tool

SPDAT

- Adult
 - VI-SPDAT
 - Full SPDAT
- Family
 - VI-SPDAT
 - Full SPDAT
- Youth
 - VI-SPDAT
 - Full SPDAT



**Service Prioritization
Decision Assistance Tool
(SPDAT)**

Vulnerable: Increased Mortality Risk

High

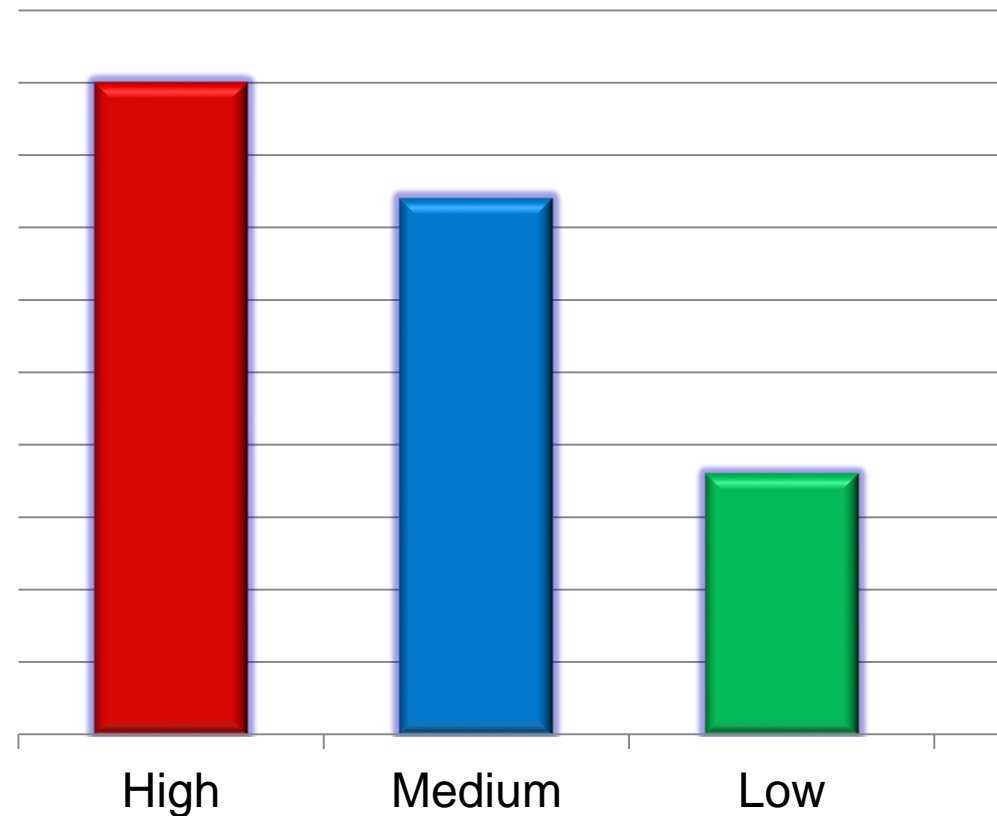
- 127 (45%)

Medium

- 105 (37%)

Low

- 49 (18%)



Urgent Action to House

Goal:

Support **40**
people to
housing over
winter 2014/15

Goal Exceeded:

Supported **50**
people to
permanent
housing

Working to
determine goals
related to
"functionally
ending
homelessness"

Housing First Approach

- **Philosophy** – believe everyone deserves a home and is housing ready
- **System Approach** – invest in housing stability solutions
- **Program** – support people experiencing persistent homelessness to find, establish and retain housing

HF
Housing First

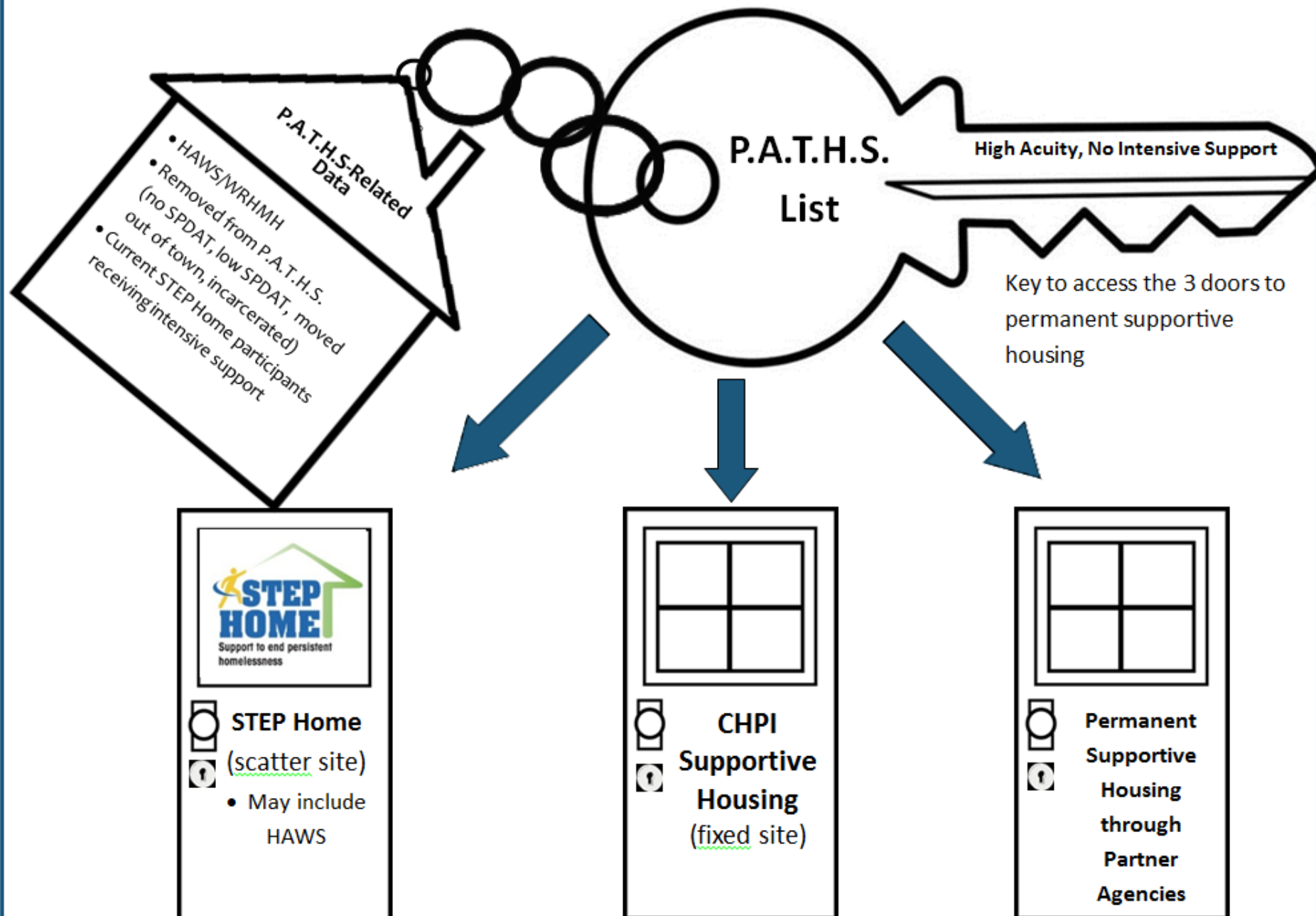
=

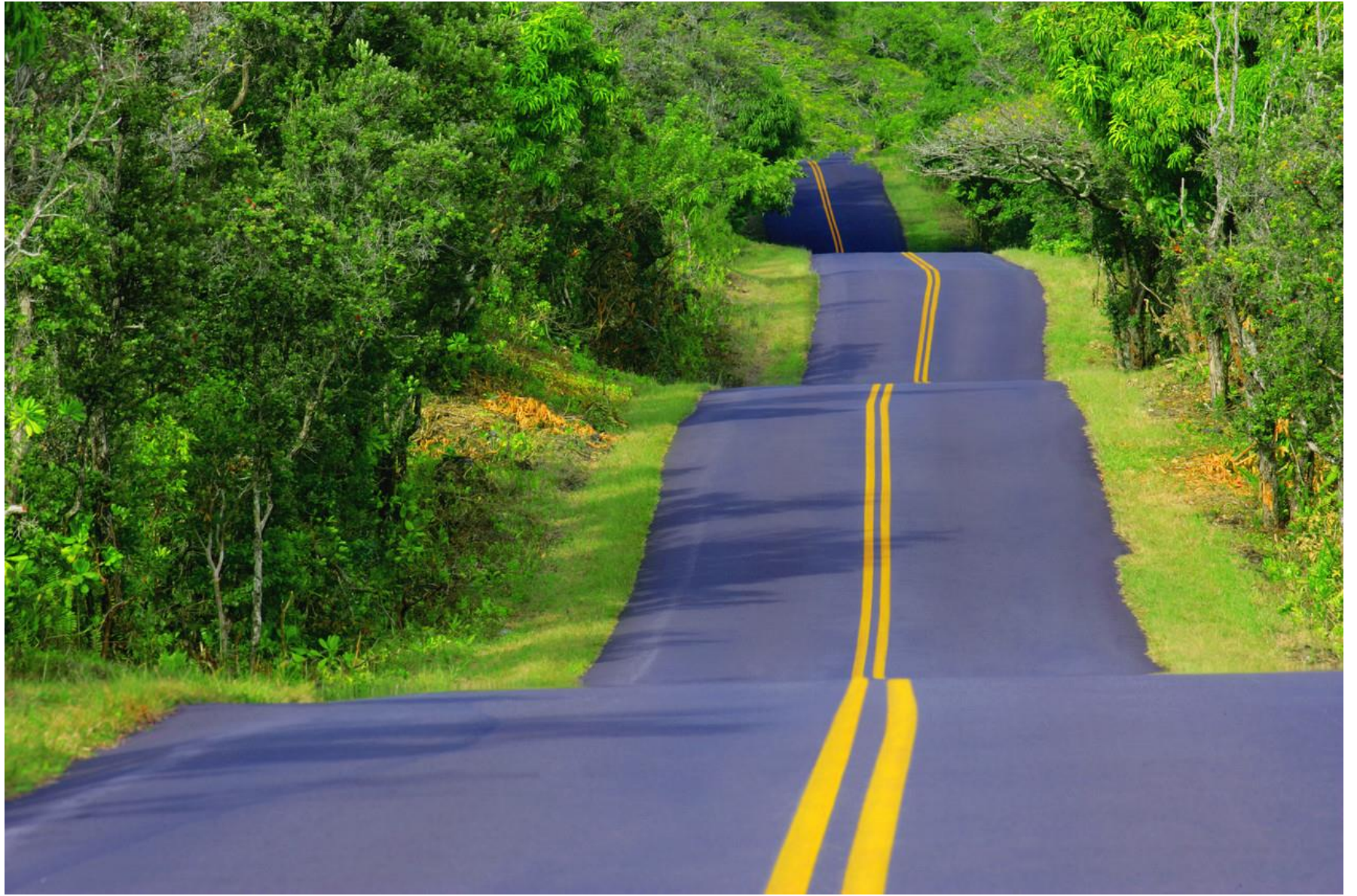


+



PRIORITY ACCESS TO HOUSING STABILITY (P.A.T.H.S.)







Contact Information:

Marie Morrison

Manager, Homelessness to Housing
Stability

mmorrison@regionofwaterloo.ca

519-575-4757 x5042